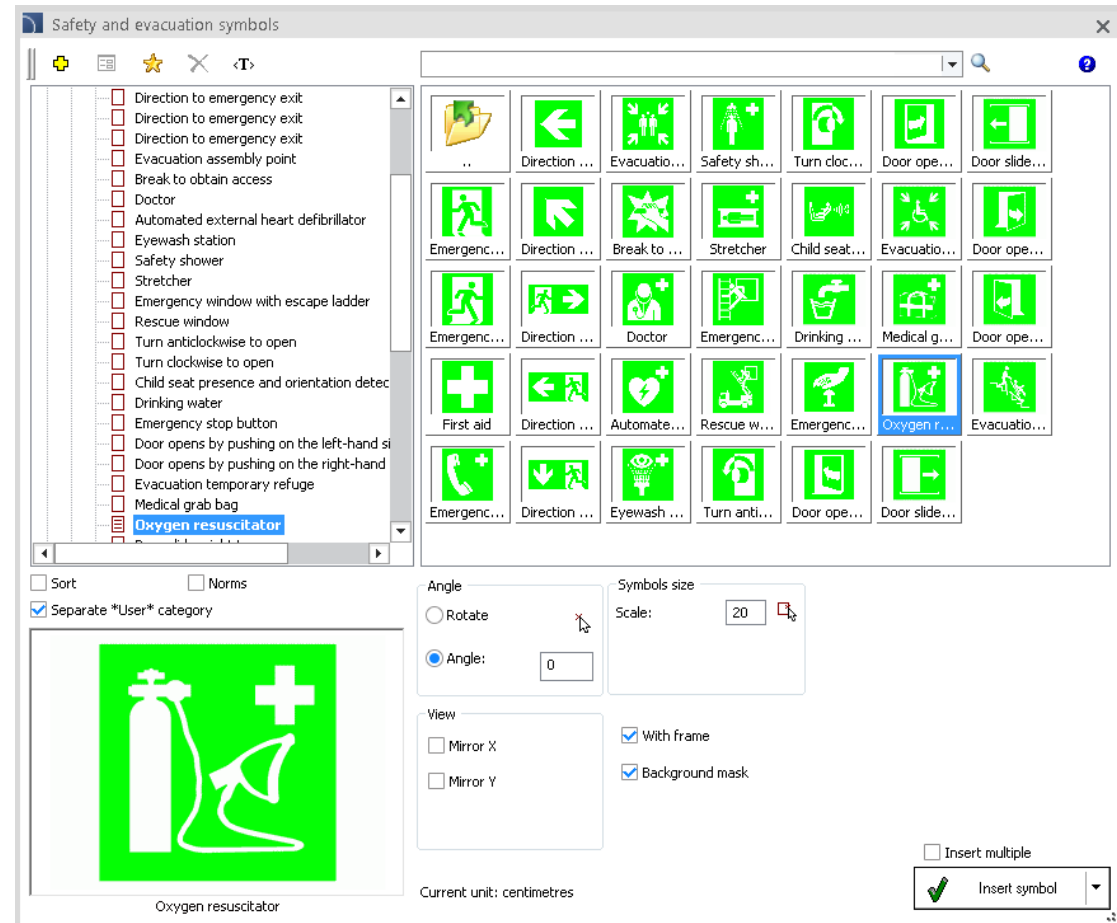




**CADprofi 12.15**

## ✓ CADprofi Architectural – extensions of the library of health and safety symbols

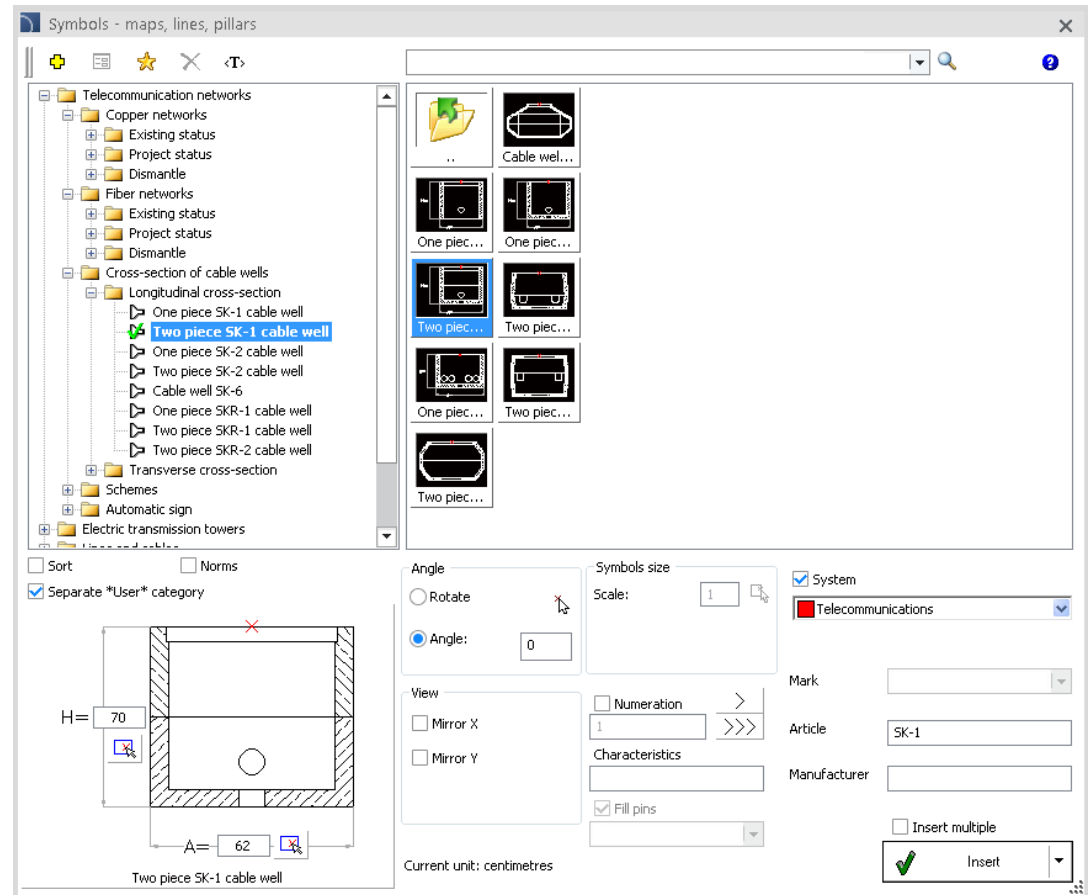
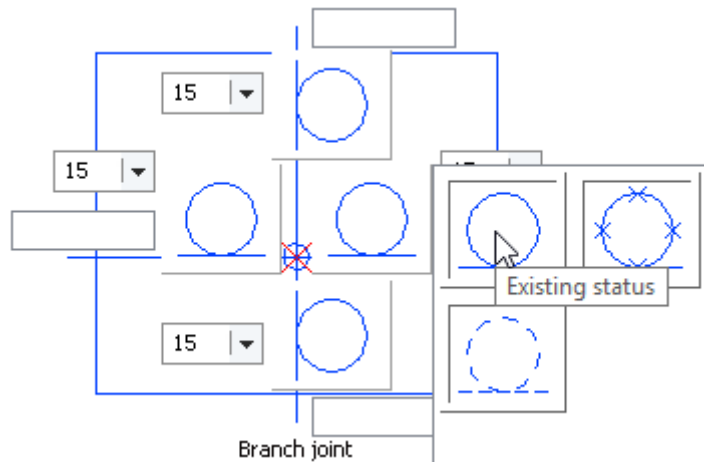
New health and safety symbols prepared in accordance to the ISO 7010 standard have been introduced to the library.



## ✓ CADprofi Electrical – extension of the telecommunication network libraries

New telecommunication network symbols such as: SKR-1 and SKR-2 cable wells and branch joints have been added to the library.

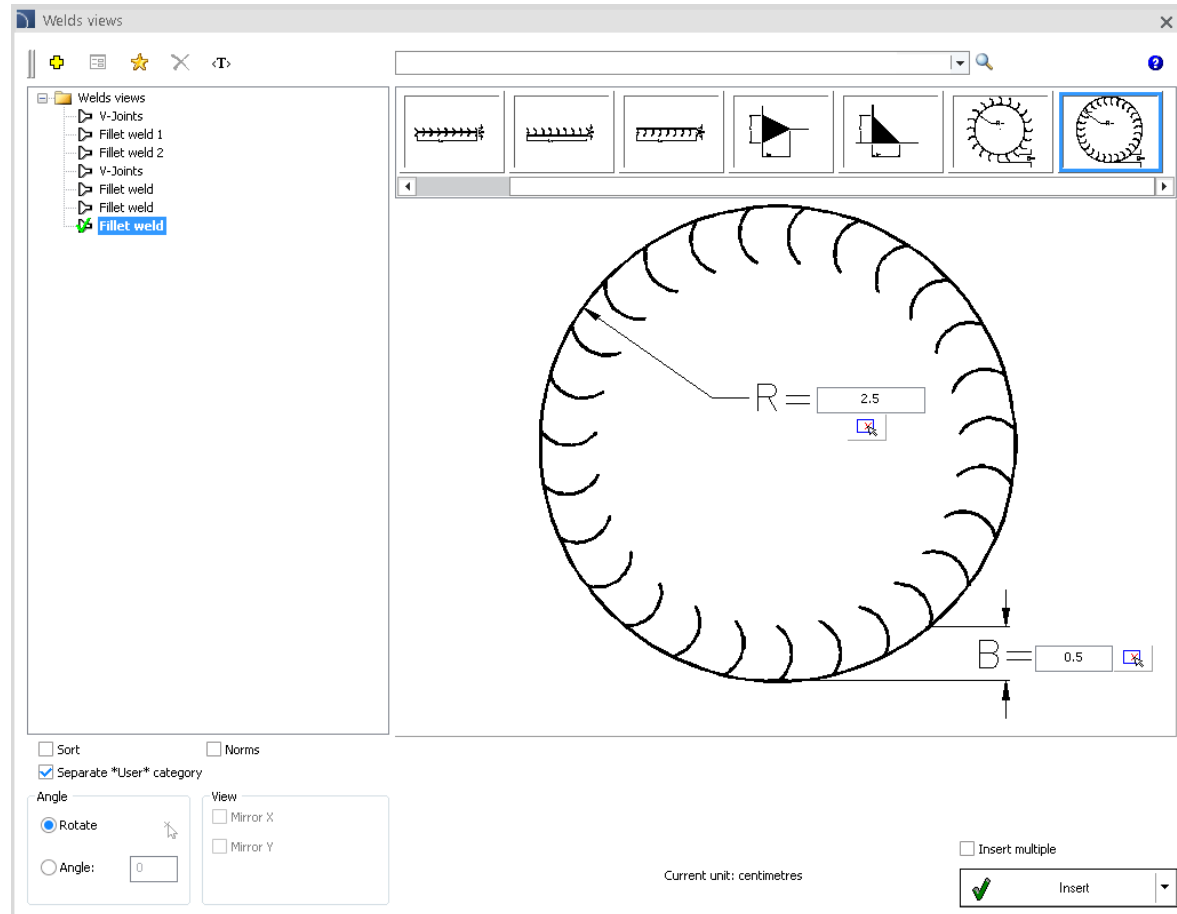
Longitudinal and transverse cable wells cross-sections have been added to the program.



## ✓ CADprofi Mechanical – additional fillet welds views

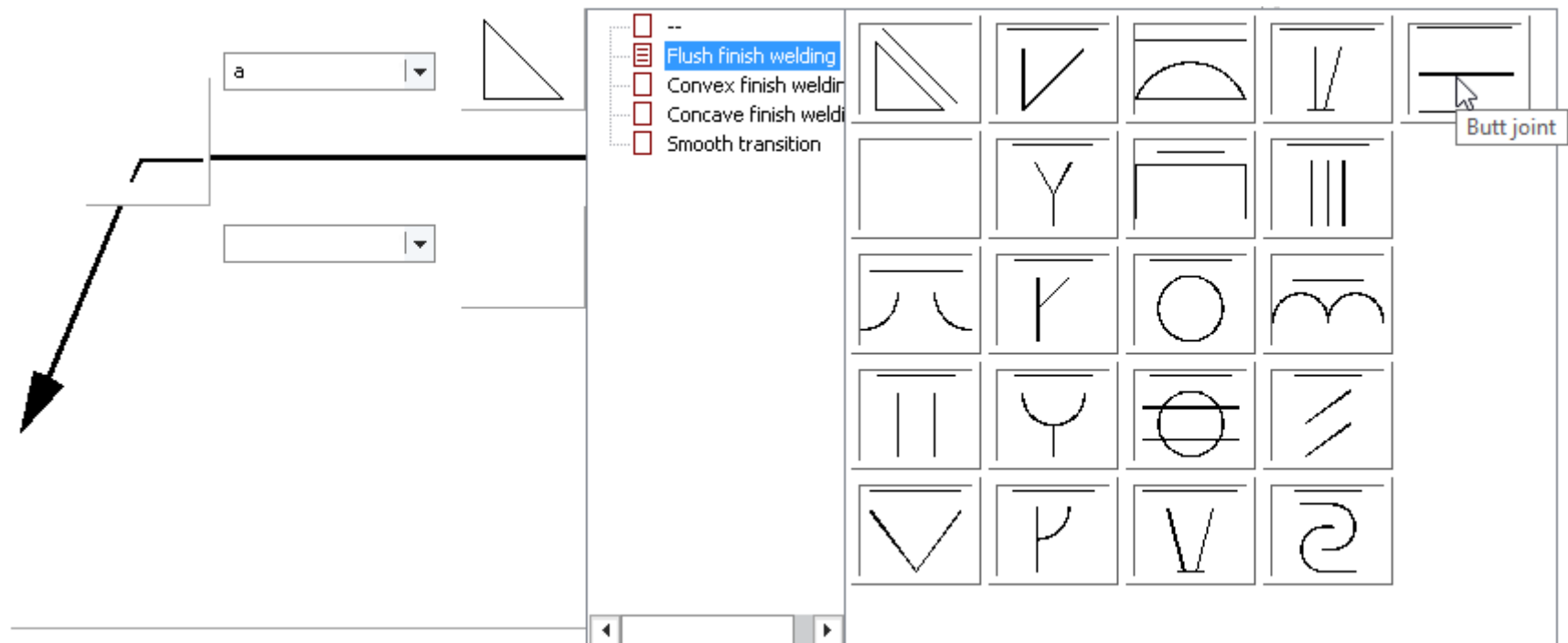
On request of the users, new fillet welds views have been added to the library.

For each item, user can specify his own dimensions.



## ✓ CADprofi Mechanical – new connection type

New type of connection (butt joint) have been added to the *Joint symbols* command.

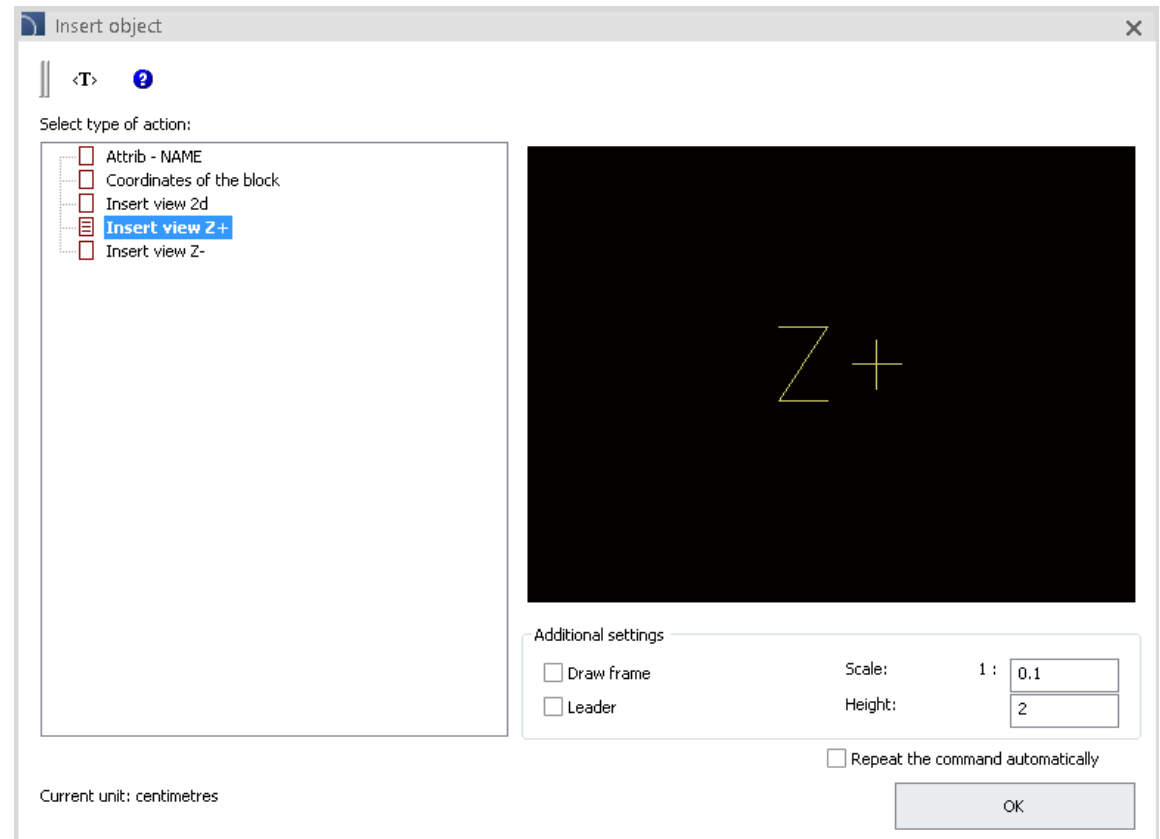
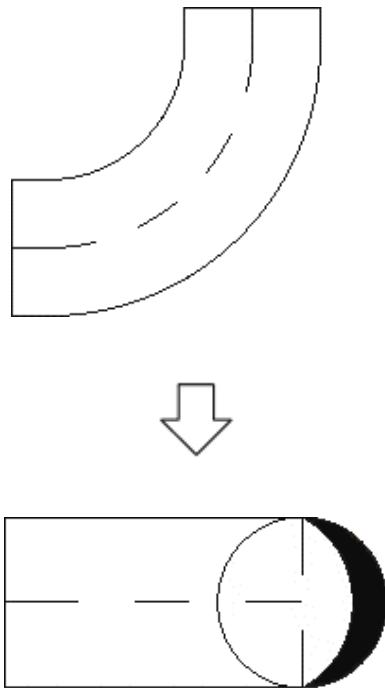


## ✓ Alternative view of 2D fittings





The *Create alternative view* command has been enhanced to support 2D fittings that have defined 2D, Z+ and Z- views.

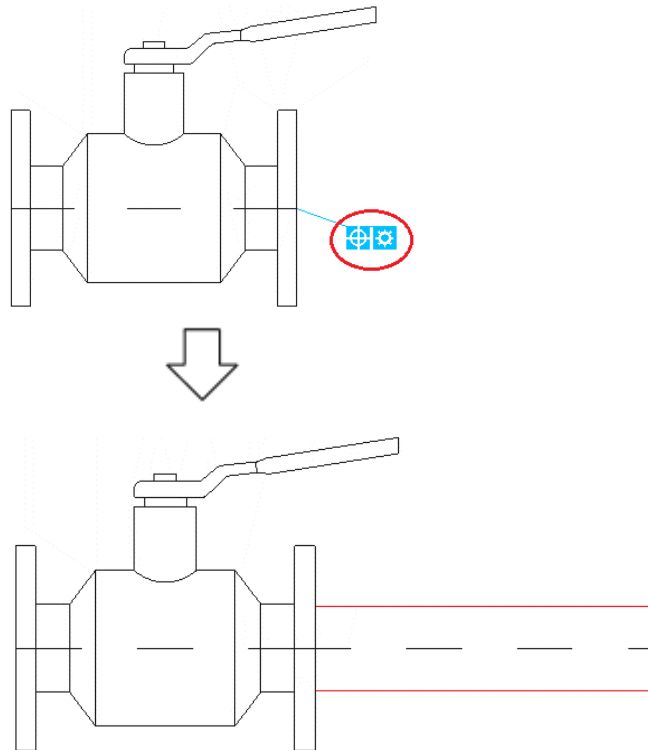
Thanks to this user can quickly insert in the drawing selected fitting view as a new block.



## ✓ Quick edit: drawing strings of lines/pipes from fittings, armature and boilers





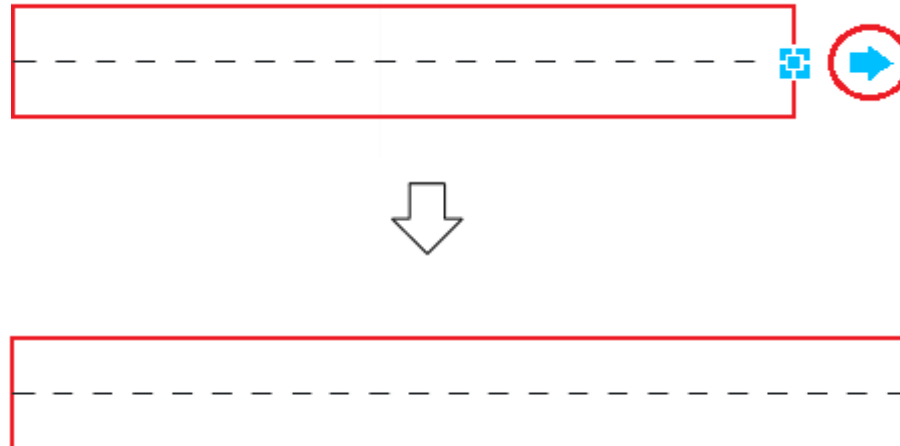
The *Quick edit* command has been extended by the possibility to draw strings of lines/pipes directly from the selected object (e.g. armature). The diameter of the line/pipe can be automatically adjusted on the basis of selected object . Second marker  displays a dialog window, in which it is possible to define all parameters: installation type, insulation thickness and line/pipe diameter.



## ✓ Quick edit: lengthening and stretching of lines/pipes and steel profiles



The *Quick edit* command has been extended by the possibility to directly change the length  and position  of lines/pipes and steel profiles.

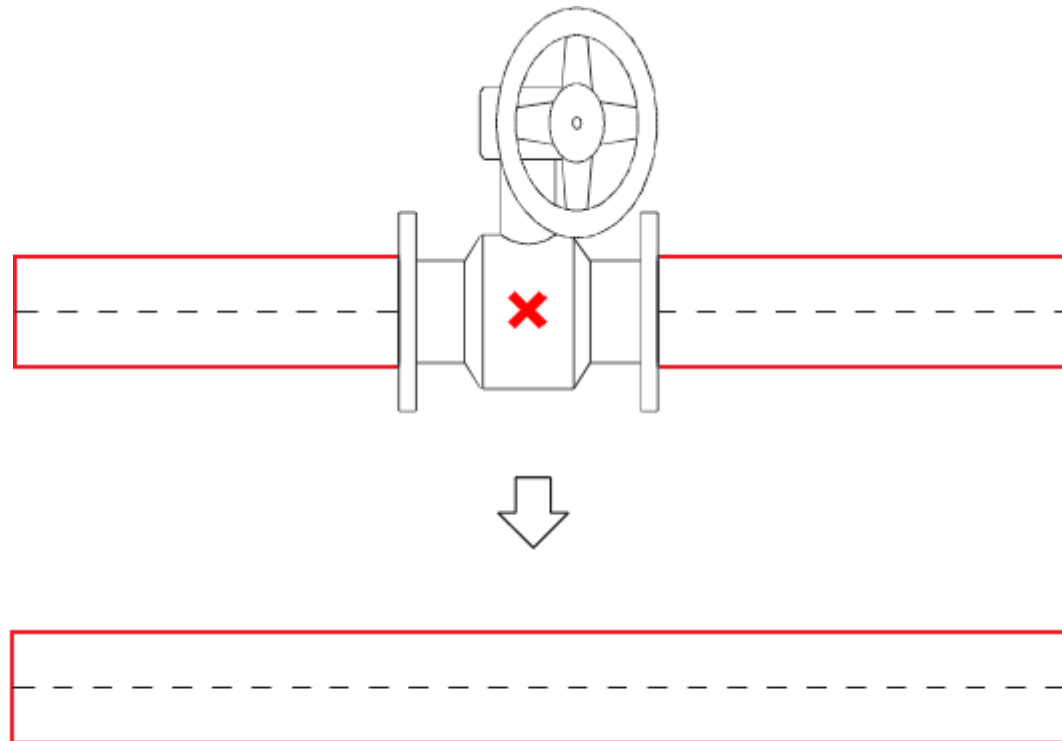




## ✓ Quick edit: deleting symbols and armature




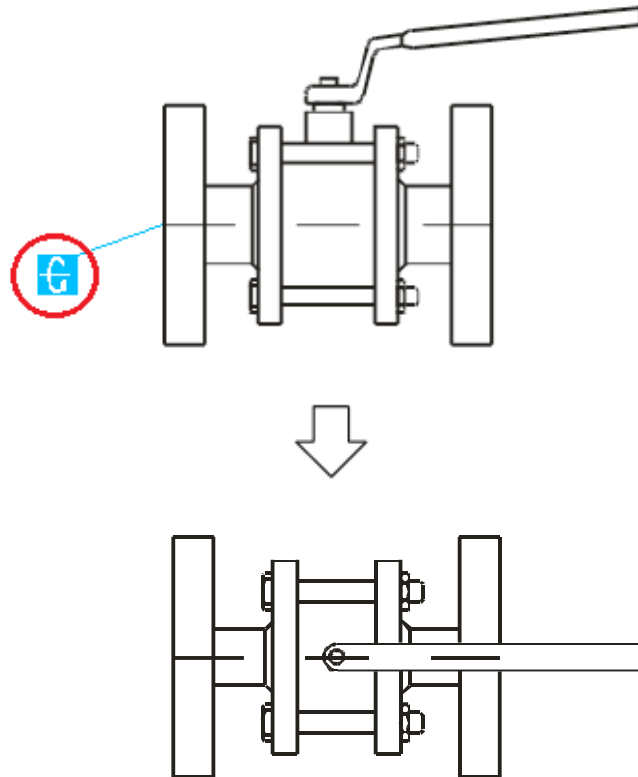
The *Quick edit* command has been extended by the possibility to delete symbols and armature from the drawing ✗. In case of removing objects that are inserted in lines/pipes, program will automatically connect these lines/pipes.



## ✓ Quick edit: rotating selected objects around the object X-axis




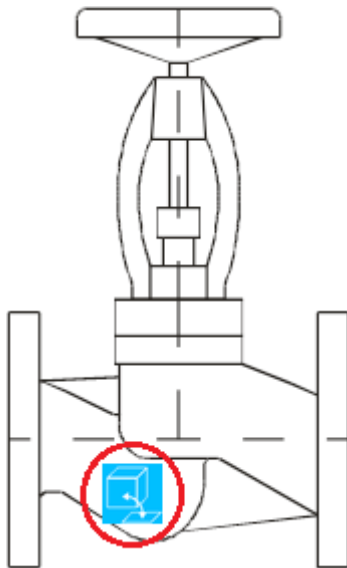
The *Quick edit* command has been extended by the possibility to rotate selected object around the X-axis , thanks to which user can quickly select the desired view.



## ✓ Quick edit: generating views with the dialog window



The *Quick edit* command has been extended with the  marker, thanks to which user can quickly open the *Create alternative view* command for the selected object.



Insert object

<T>

?

Select type of action:

Attrib - NAME

Coordinates of the block

Insert: View 2

Insert: Scheme

Insert: View 3

Insert: Symbol

Name

Additional settings

Draw frame

Scale: 1 : 100

Leader

Height: 2

Repeat the command automatically

OK

Current unit: centimetres



# CADprofi

- ✓ **Update of manufacturers' libraries:**





# CADprofi

## ✓ Adjustment to many base CAD programs

CADprofi 12.15 has been adjusted to work with latest CAD programs, including: progeCAD 2017, 4MCAD 16, AviCAD 2017, CMS IntelliCAD 8.1 and ArCADia 10.

CADprofi 12 currently works with many base CAD programs including: AutoCAD (since the 2000 version), BricsCAD, GstarCAD, IntelliCAD, progeCAD, ZWCAD, ARES Commander Edition and others.

The AutoCAD logo, featuring the word 'AutoCAD' in red with a registered trademark symbol.

The ZWCAD logo, featuring the word 'ZWCAD' in blue with a green plus sign.

The GstarCAD logo, featuring the word 'GstarCAD' in blue and yellow, with the tagline 'An Alternative CAD System' below it.

The BricsCAD logo, featuring a blue stylized 'B' and the word 'BRICS CAD' in black.

The progeSOFT logo, featuring a blue circle with a yellow 'I' and the word 'progeSOFT' in blue.

The IntelliCAD logo, featuring a purple diamond with a yellow 'I' and the word 'IntelliCAD' in purple.



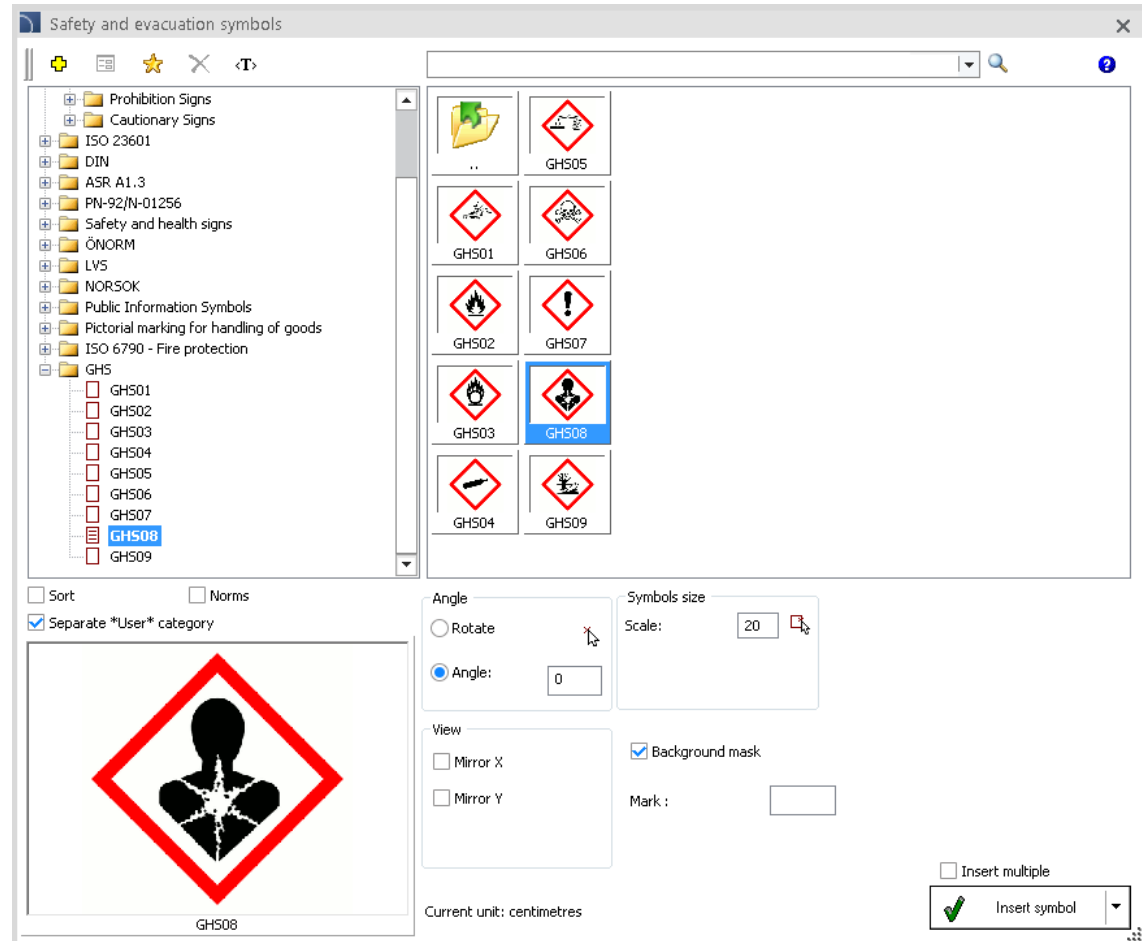
**CADprofi**



**CADprofi 12.11**

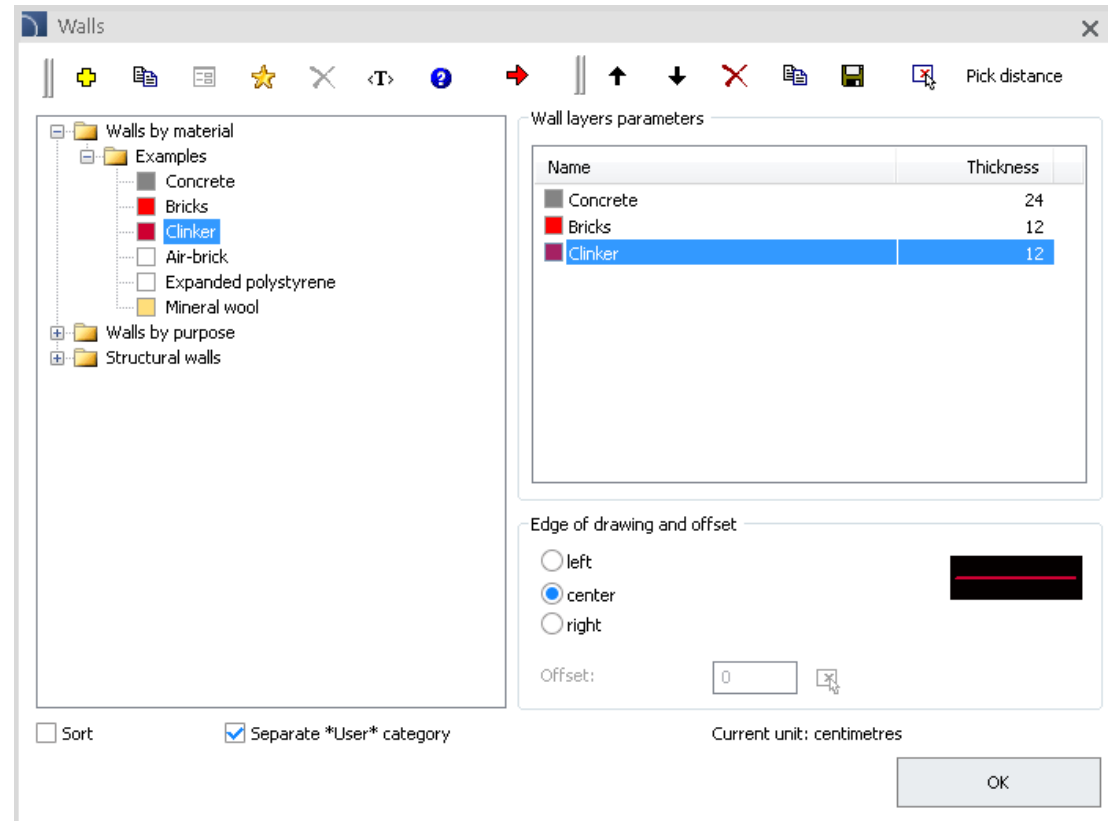
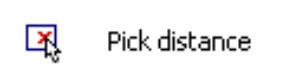
## ✓ CADprofi Architectural – extensions of the library of health and safety symbols.

Additional symbols indicating type of hazard danger (GHS) has been added to the library.



## ✓ CADprofi Architectural – picking up the wall thickness from the drawing

An ability to take the dimensions of the wall thickness directly from the drawing has been added to the program.

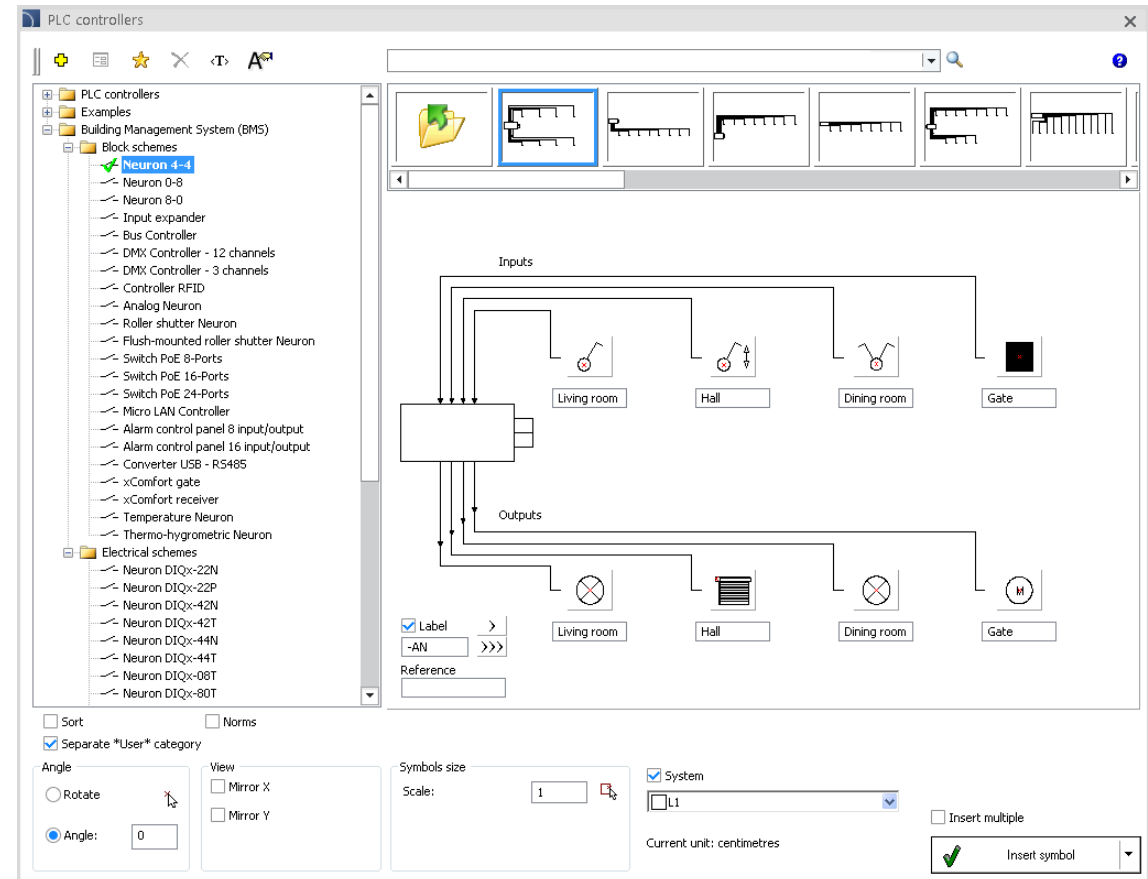
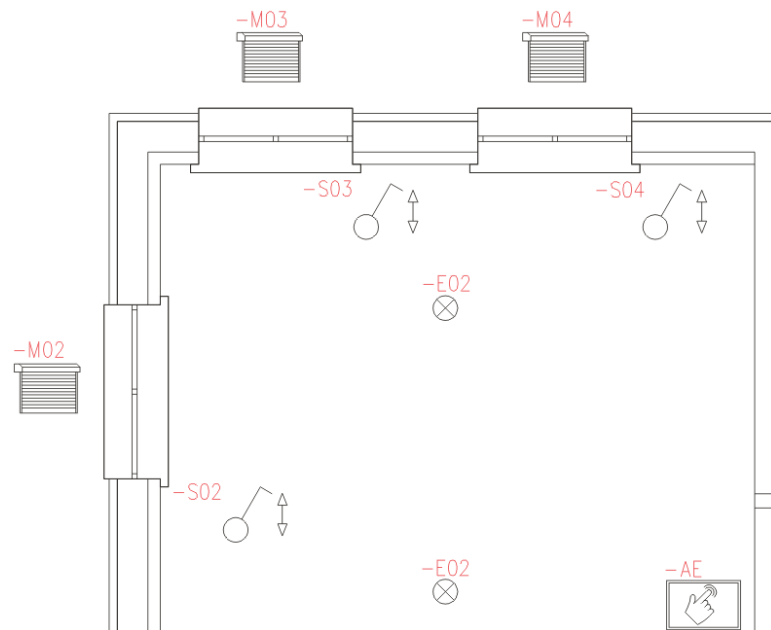




## ✓ CADprofi Electrical – building management system (BMS)

BMS is an integrated system that allows for monitoring and management of all systems and devices in the building and its surroundings.

In the program user can find block schemes, electrical schemes and symbols of Electrical devices that are used in the design of smart building e.g. controllers, alarm control panels, neurons, converters, input expander, USB and HDMI outputs, PoE switch, modems, routers, cameras, receivers etc.

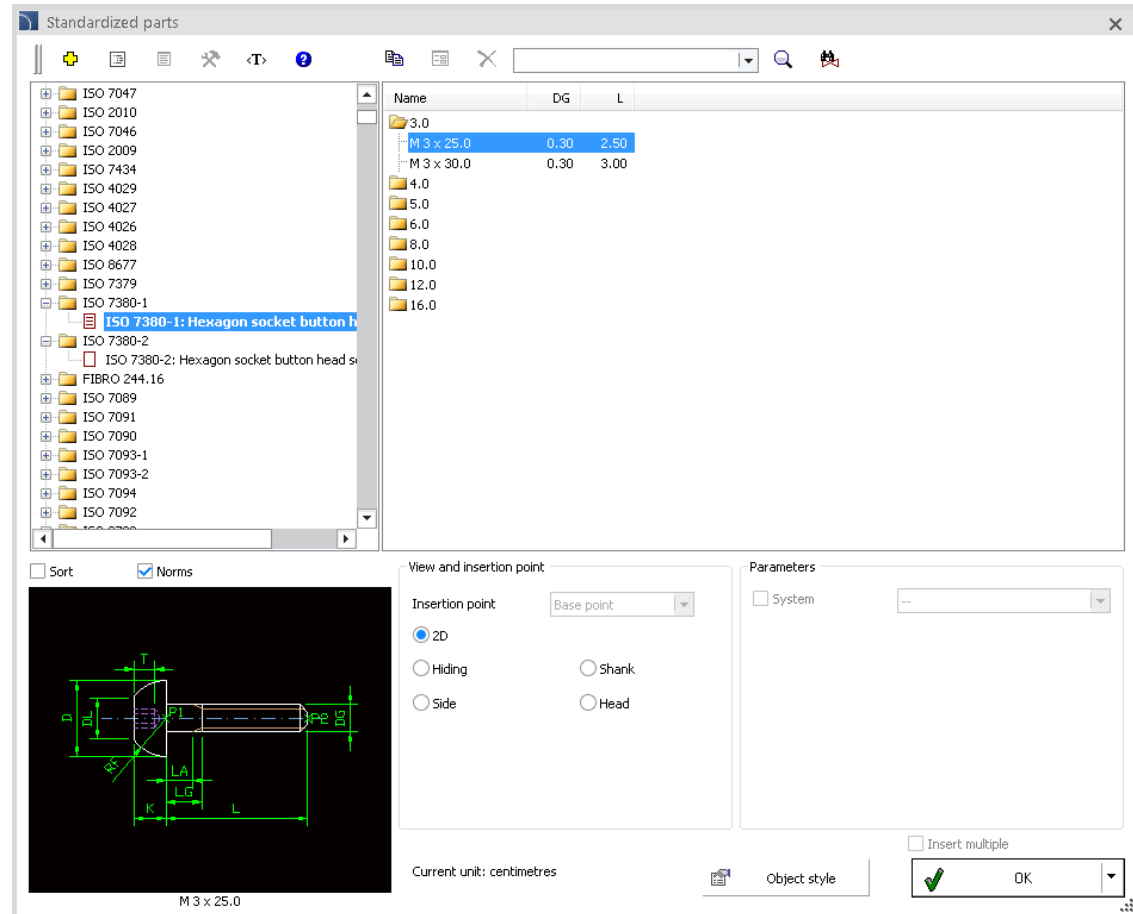


## ✓ CADprofi Mechanical – additional ISO standards

Additional standardized elements, including Hexagon socket button head screws (ISO 7380-1 and ISO 7380-2) have been added to the library.

In the dialog window the possibility to sort items in accordance to standards have been added.

For each element, user can define his own sizes or expand the existing databases.



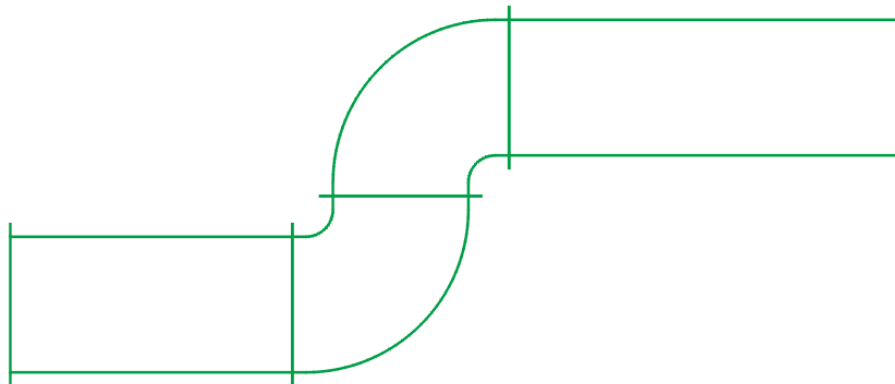
## ✓ CADprofi HVAC & Piping – new command: *Flanges of general elements*



This command allows to add flanges for ducts and ventilation fittings with a rectangular cross-section.

Filters make it easier to quickly add flanges for example to selected type of installation or for specified type of ducts in the drawing.

Installation can be immediately drawn with flanges. To do this, user must specify the flanges size in the *Ducts – general views* or *Ducts sequences – general views* command dialog window.



Flanges of general elements

<T>

Flange size

10

☒ Apply to selected objects

☐ Apply to all objects

Apply only for:

☐ Plumbing/heating

☒ Ventilation

☐ Electrical

☐ Installation/System

Specify CADprofi fitting

☐ Diameter/Width and Height

Specify CADprofi fitting

Current unit: centimetres

OK

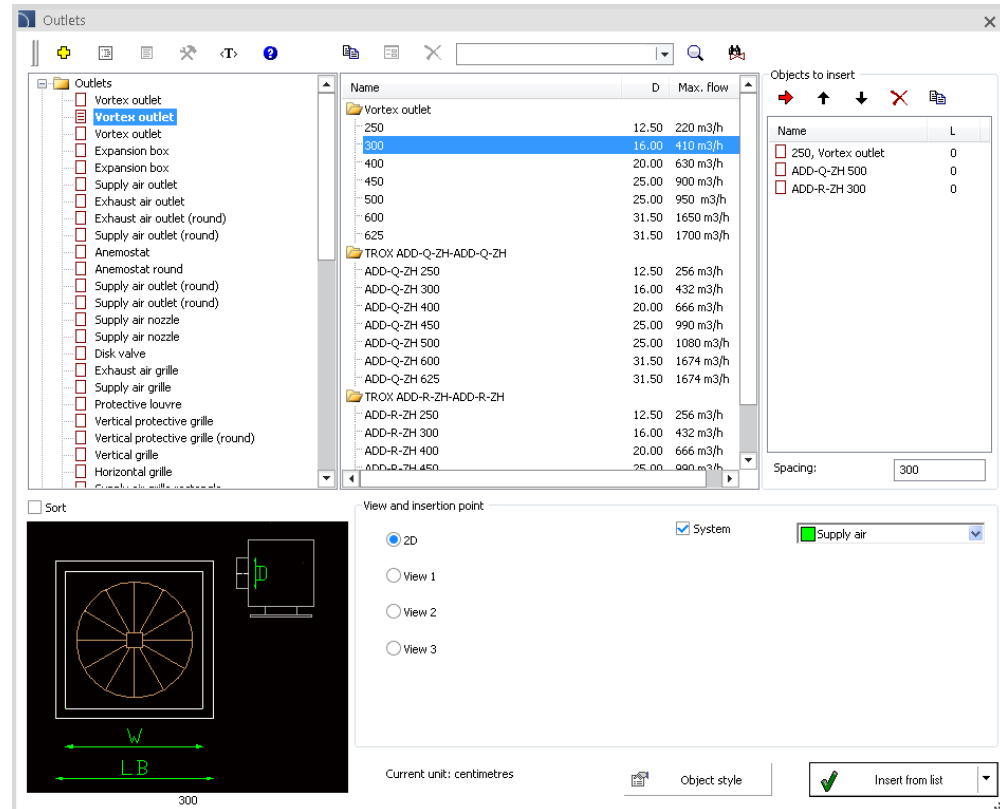
## ✓ CADprofi HVAC & Piping – changes in the *Outlets* command



Functionality of the command has been extended by:

- Possibility to insert items from the list, thanks to which it is possible to insert to the drawing many elements with specified spacing.
- Possibility to automatically connect outlets with ventilation ducts.
- Possibility to define user's type of series, which can be freely edited and saved in the database.

In addition, the TROX and Alnor company products have been added to the command database.

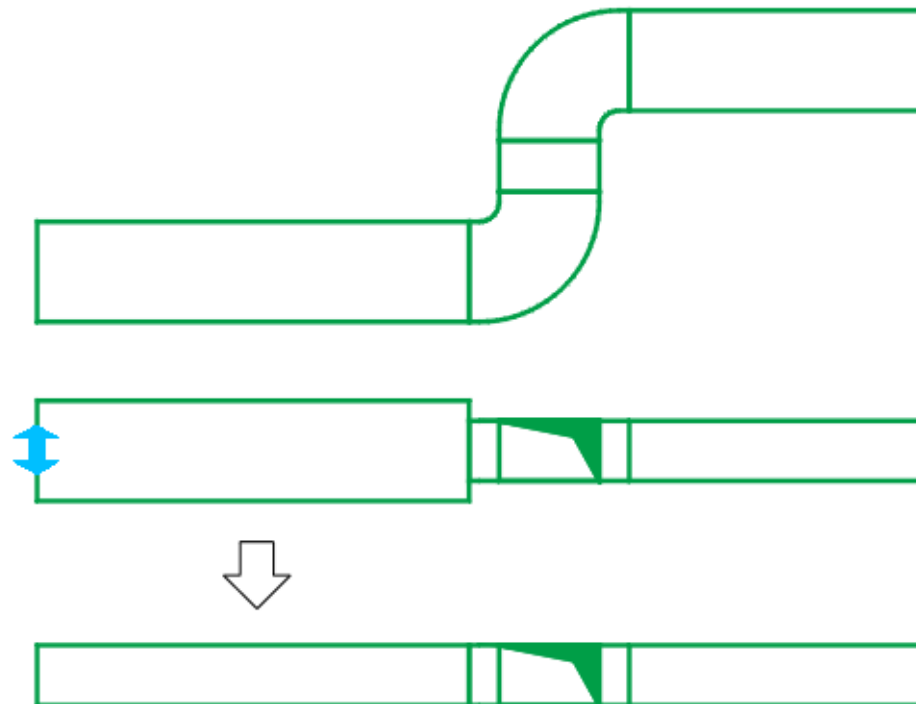


## ✓ CADprofi HVAC & Piping – quick edition of fittings



The possibility to change the view of general fittings with the *Quick edit* function has been added to the program.

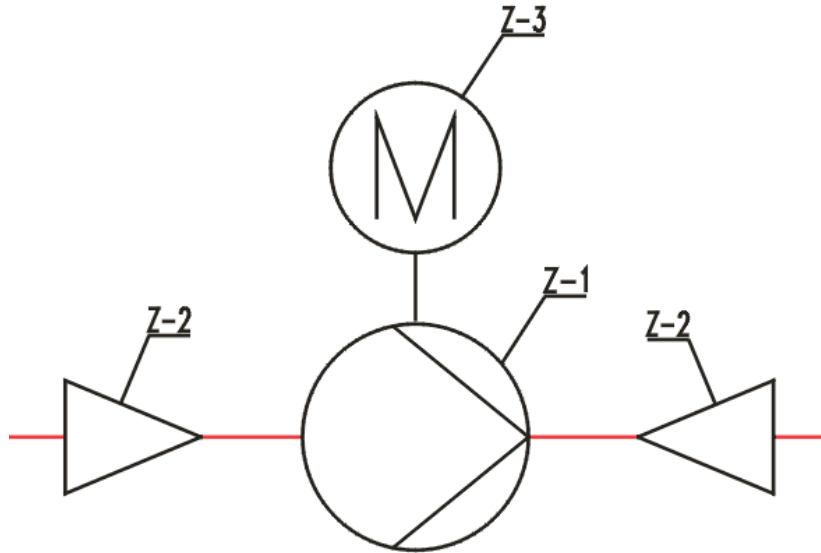
This command allows to quickly change the direction of conducting the installation or obtaining the cross-sections of individual elements on the basis of previously drawn plan.



## ✓ Enhanced *Numbering* command

At the users request we have introduced a new numbering option: *The same number for similar objects.*

Selecting this option causes that similar objects, that have the same size or technical data, will be assigned with the same number.



Numbering

|| <T> ?

Type of numbering

| Prefix | Number | Suffix |
|--------|--------|--------|
| Z-     | 1      |        |

☐ Start from first free number
 ☐ Fix number

☐ Prefix from system name
 ☐ Number suffix

☐ Skip used numbers
 ☐ Automatic position

☒ The same number for similar objects
 ☒ Draw leader

Numbers size

Height: 10 Scale: 1 : 20

Current unit: centimetres

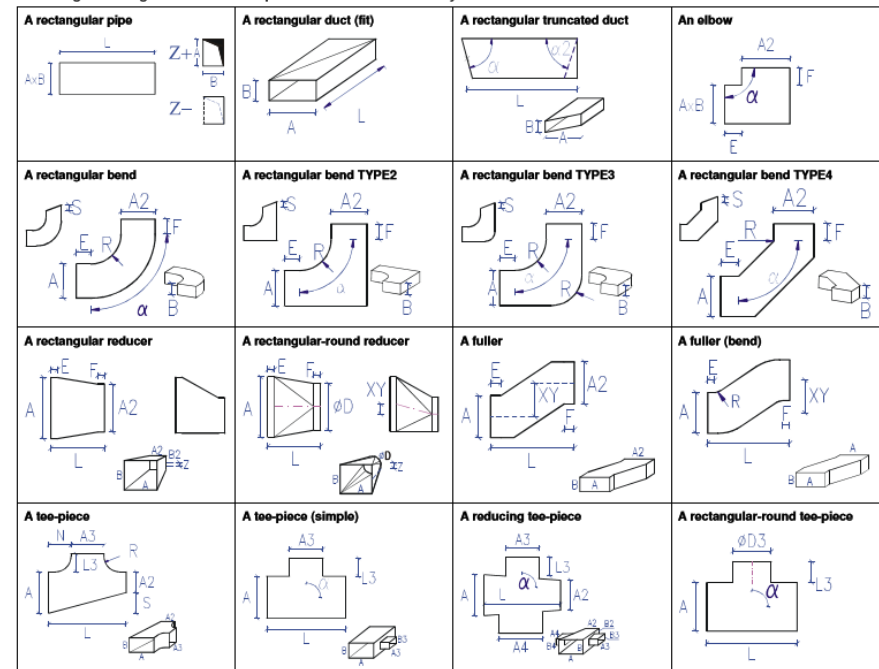
OK

## ✓ Optimization of many commands

In various commands an additional functionality and optimization had been added to the program:

- Specifications – fittings catalogue and a correction of certain fittings in accordance to the catalogue.
- Additional symbols in the electrical module.
- Correction of fillings in isometric symbols.
- New fitting slides that include installation colour (makes easier to choose the appropriate system).
- Performance optimization while insulating multiple ducts and fittings.
- New program help (help on-line) run directly in the browser.

Rectangular fittings – an annex to specifications made in CP-System





# CADprofi

- ✓ Update of manufacturers' libraries:







# CADprofi

## ✓ Adjustment to many base CAD programs

CADprofi 12.11 has been adjusted to work with latest CAD programs, including: AutoCAD 2017.

CADprofi 12 currently works with many base CAD programs including: AutoCAD (since the 2000 version), BricsCAD, GstarCAD, IntelliCAD, progeCAD, ZWCAD, ARES Commander Edition and others.

The AutoCAD logo, with "AutoCAD" in red and a registered trademark symbol.

The ZWCAD logo, with "ZWCAD" in blue and a green plus sign.

The GstarCAD logo, with "Gstar" in blue and "CAD" in yellow, followed by the tagline "An Alternative CAD System" in blue.

The BricsCAD logo, featuring a blue stylized "B" shape above the text "BRICSCAD" in blue.

The progeSOFT logo, featuring a blue sphere with a yellow "I" shape inside, above the text "progeSOFT" in blue.

The IntelliCAD logo, featuring a purple diamond shape with a yellow "I" shape inside, above the text "IntelliCAD" in purple.



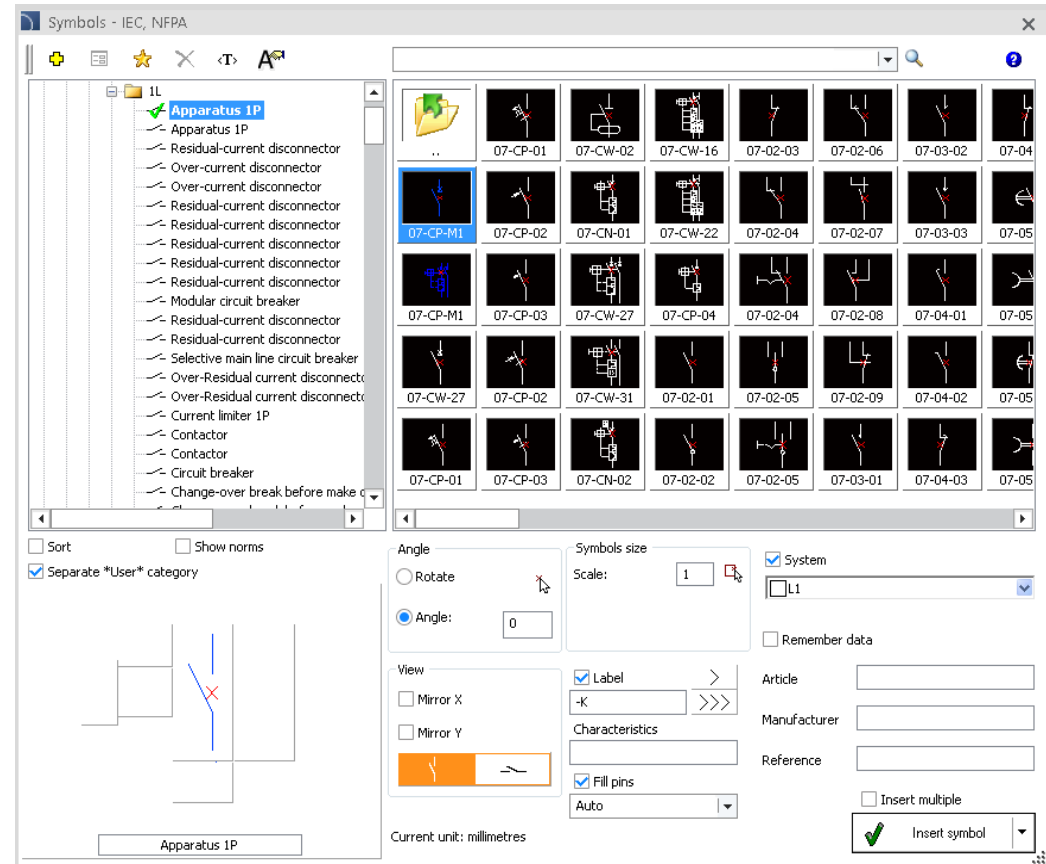
**CADprofi**



**CADprofi 12.03**

## ✓ Fast switching between symbols views/variants

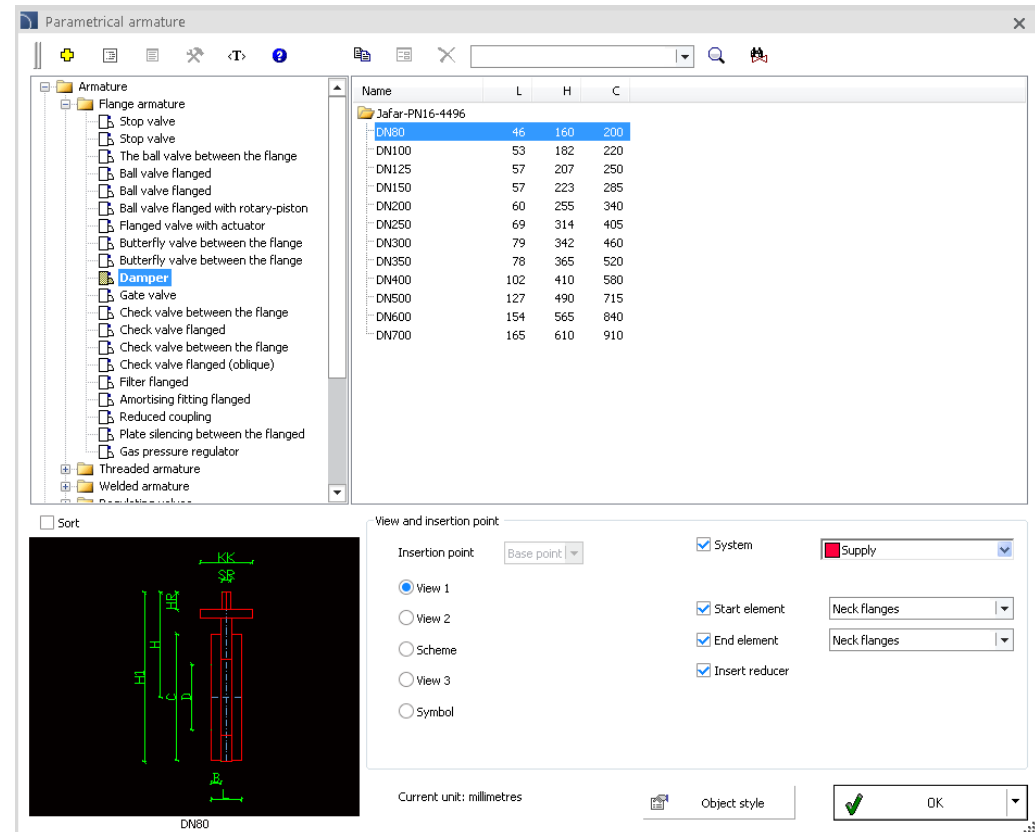
A possibility to quickly switch variants or views of symbols has been added to the program. Thanks to this user can easily change the selected symbol (e.g. IEC symbols from the vertical variant to the horizontal variant or furniture views from top view to front view).



## ✓ CADprofi HVAC & Piping – extension of the armature library

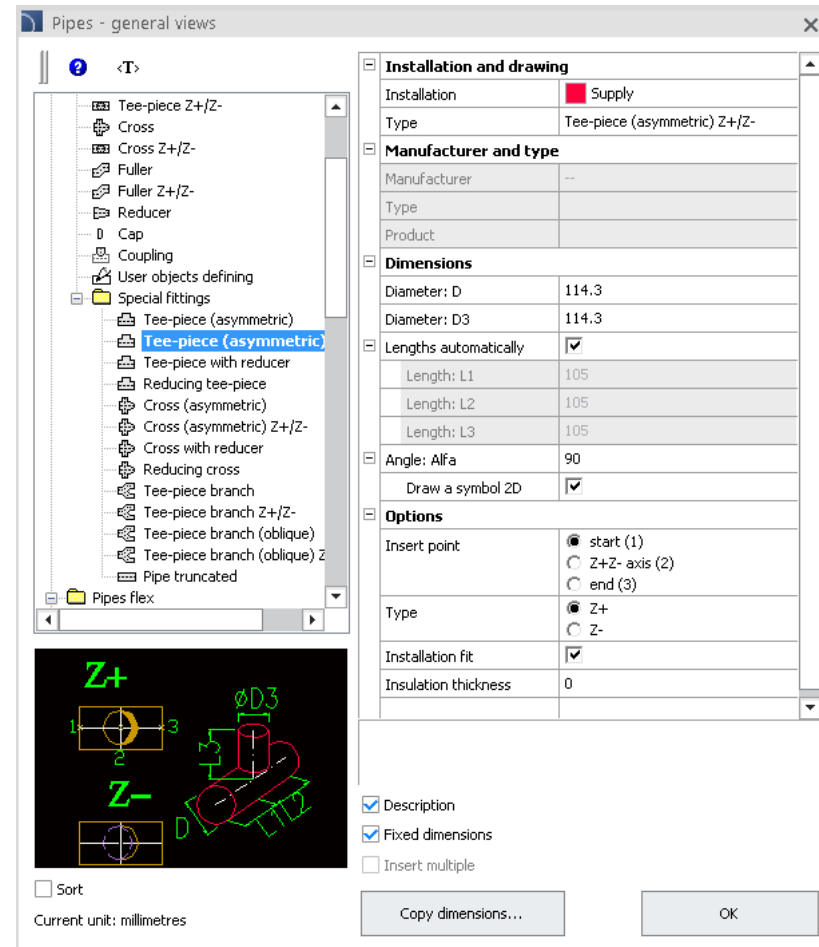
To the library that contains armature views and other devices additional products have been introduced:

- dampers,
- JAFAR company products (e.g. ball valves, non-return dampers and gate valves),
- ZETKAMA company products (e.g. filters).



## ✓ CADprofi HVAC & Piping – additional fittings

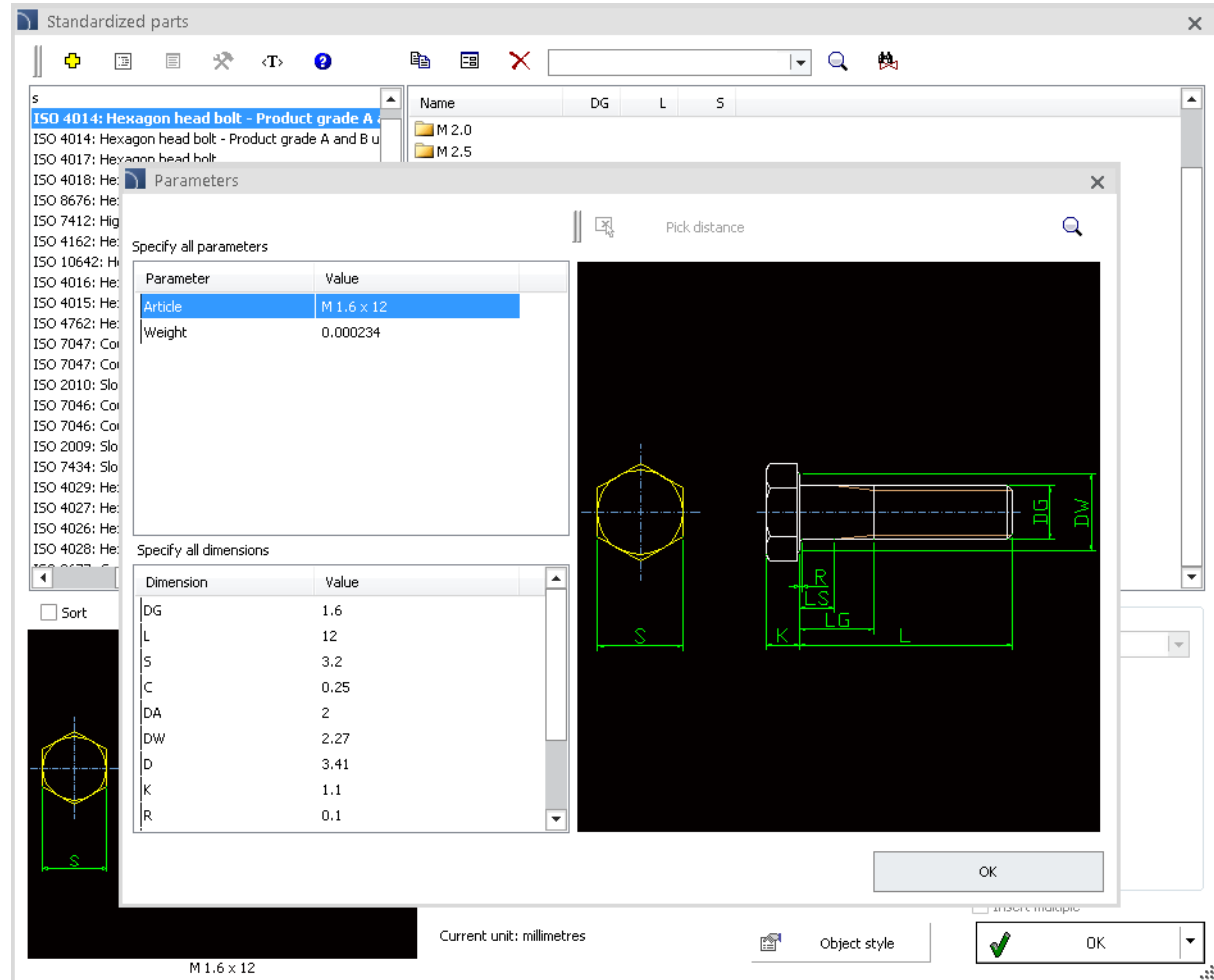
Asymmetric tee-piece and asymmetric cross in Z+/Z- views have been added to the *Pipes – general views* command.



## ✓ CADprofi Mechanical - possibility to expand the object database with user products

Program contains many object databases with specified parameters. Currently user can use standard type of series, as well as expand the database with his own type of series, which can be freely edited and saved in the database.

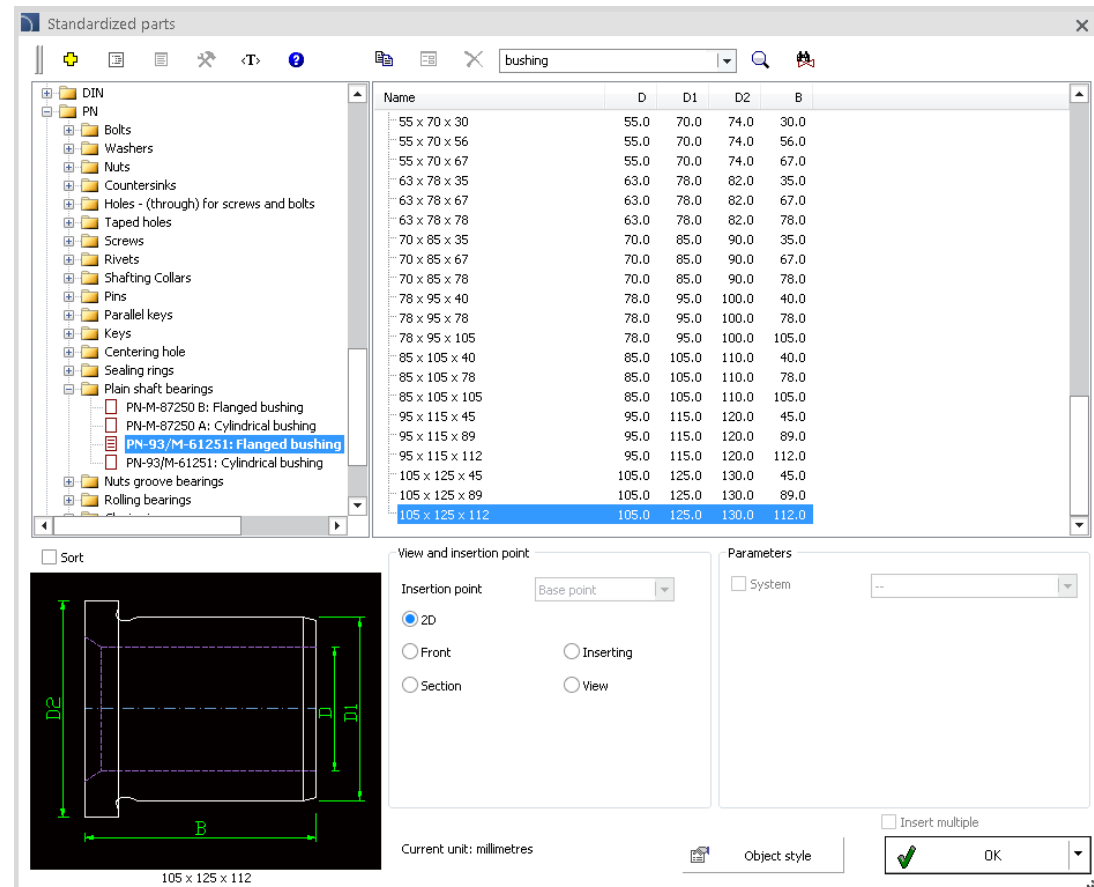
It is possible to specify any dimensions and technical parameters for all user elements that have been added to the program.



## ✓ CADprofi Mechanical – additional PN, ISO, ANSI and GOST standards

New standardized elements have been added to the program, including:

- Cylindrical and standard bushings.
- Round, square and rectangular structural tubings.
- Square steel bars.
- Steel and aluminium I-beams.
- Steel U-shapes.
- Aluminum T-shape.
- L-shapes with equal and unequal angles.
- Aluminum Z-shape.
- Electrically welded steel tubes, water supply, seamless and cold deformed.
- Seamless hot and cold deformed steel pipes.
- Seamless hydraulic tubes.
- Stainless steel welded pipes.
- Flat, loose plate, neck, blind, hubbed socket and hubbed slip-on flanges.





# CADprofi

- ✓ **Update of manufacturers' libraries:**







# CADprofi

## ✓ Adjustment to many base CAD programs

CADprofi 12.03 has been adjusted to work with latest CAD programs, including: GstarCAD 2016, ARES Commander 2016 and CADMATE 2016.

CADprofi 12 currently works with many base CAD programs including: AutoCAD (since the 2000 version), BricsCAD, GstarCAD, IntelliCAD, progeCAD, ZWCAD, ARES Commander Edition and others.

The AutoCAD logo, with 'AutoCAD' in red text and a registered trademark symbol.

The ZWCAD logo, with 'ZWCAD' in blue text and a green plus sign.

The GstarCAD logo, with 'GstarCAD' in blue and yellow text, and the tagline 'An Alternative CAD System' in blue.

The BricsCAD logo, featuring a blue stylized 'B' and the text 'BRICSCAD' in blue.

The progeSOFT logo, featuring a blue globe with a yellow '1' and the text 'progeSOFT' in blue.

The IntelliCAD logo, featuring a purple diamond with a yellow '1' and the text 'IntelliCAD' in purple.



**CADprofi**



# **CADprofi 12**

Summary of main changes made to the program since the CADprofi 11.01 version.

## ✓ CADprofi HVAC & Piping – changes in the drawing of general piping system

In the CADprofi program it is possible to draw pipes in schematic, general or detailed views.

In the *Pipes – general views* command the possibility to draw simplified views of plumbing installations, as well as, piping installations made from copper or plastic was added to the program. This command also allows to draw steel and flex installations.

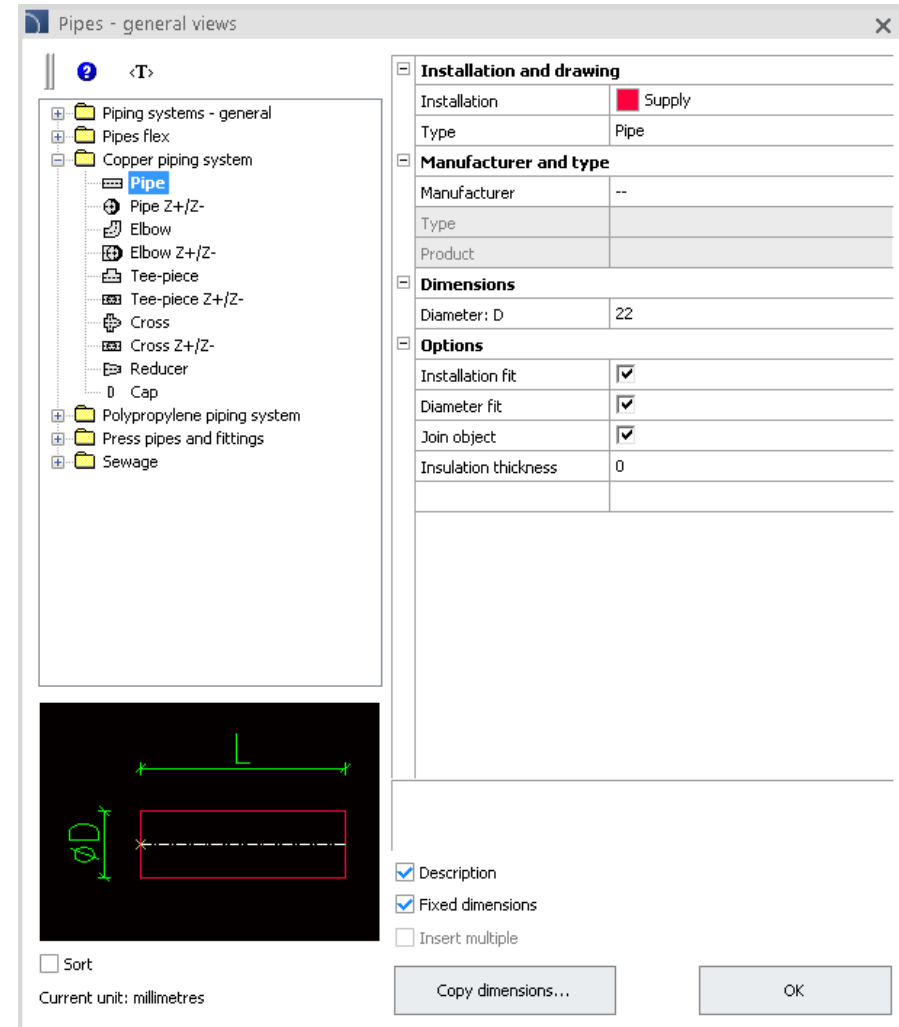
\_\_\_\_\_ - *Schematic view*

\_\_\_\_\_ - *General view*

\_\_\_\_\_ - *Detailed view*

Notice:

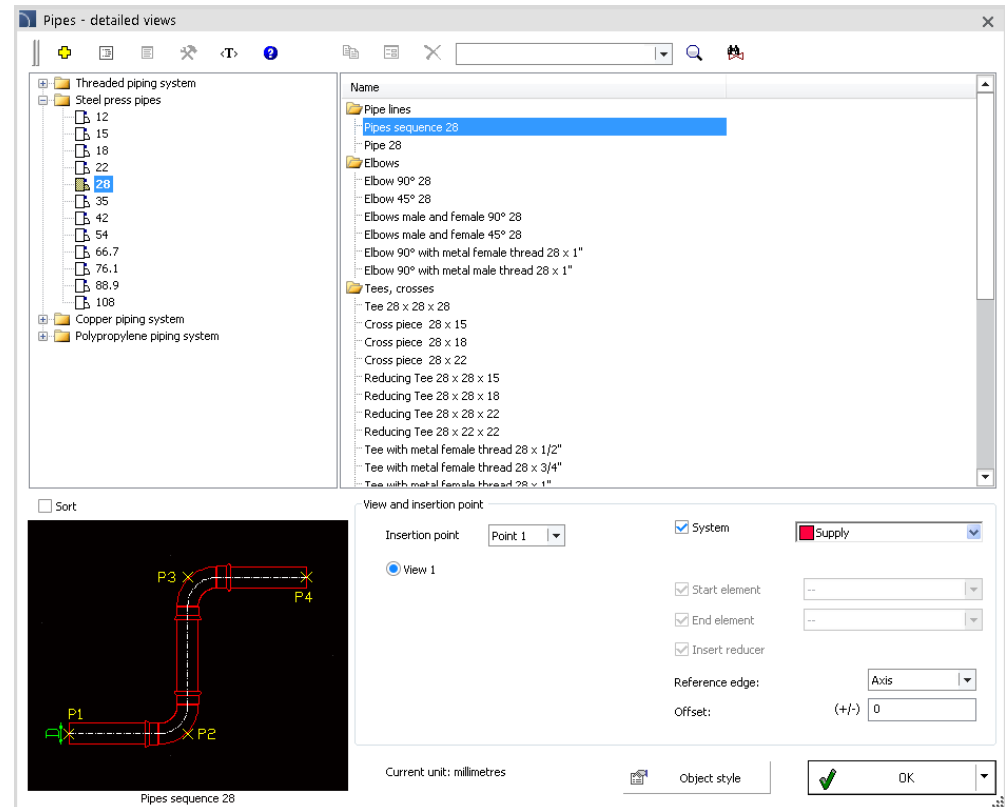
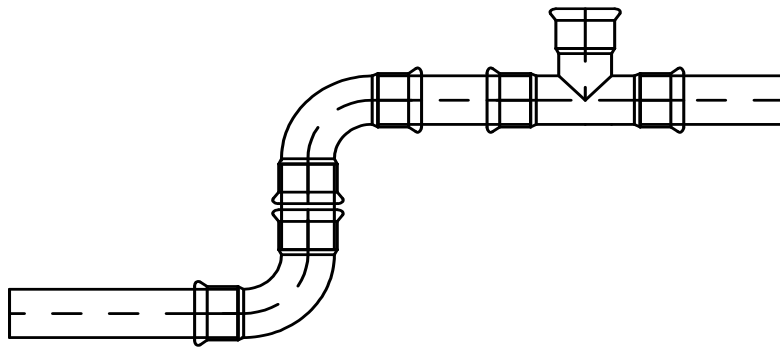
For welded or butt heat sealed installations general views can be also used as detailed views.




## ✓ CADprofi HVAC & Piping – command *Pipes* – detailed views

This command contains detailed views for threaded, pressed, copper and plastic pipes. In the current program version the data layout has changed. The current data layout is prepared in accordance to the size of pipes, thank to which it is a lot easier to design the installation with a certain diameter, as well as, it is possible to automatically join pipes with elbows and tees.

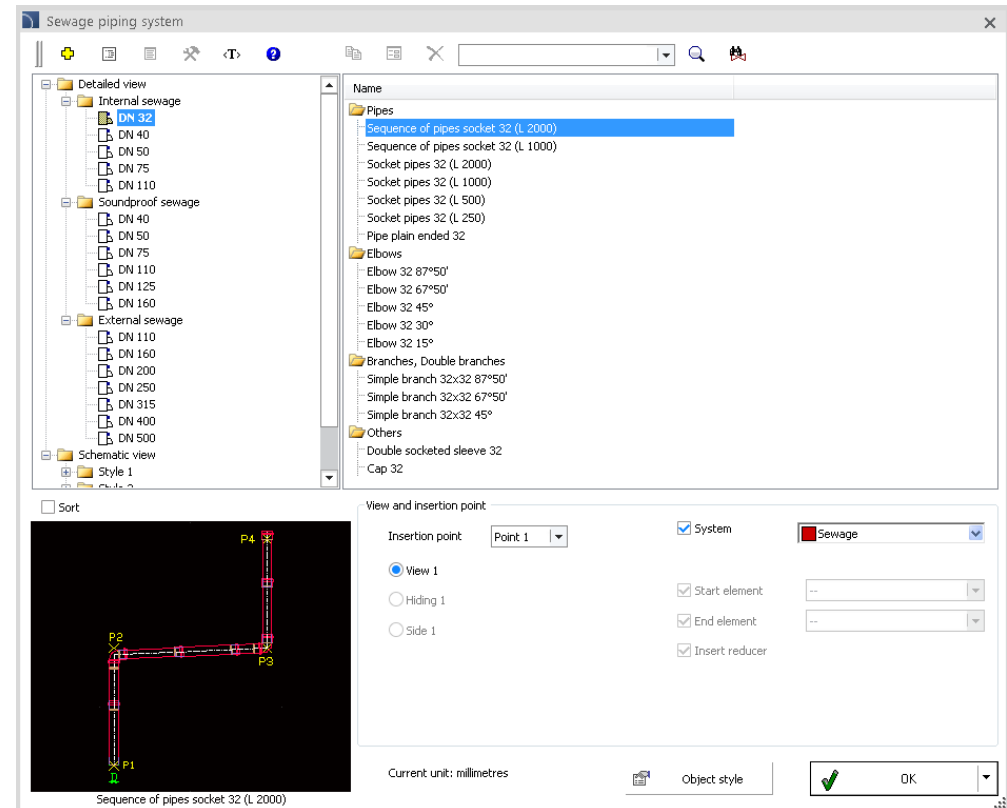
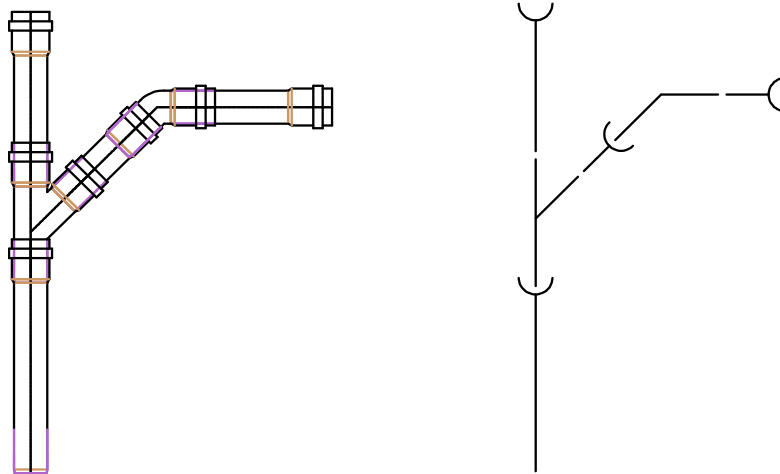
A system of pressed pipes and fittings for steel pipes which allows for convenient drawing of installations with automatic insertion of appropriate elbows (12 – 108 mm.) has been added to the program. In addition, a possibility to connect this system with other installations (by using the threaded or flanged fittings) has been added to the program.



## ✓ CADprofi HVAC & Piping – new command *Sewage piping system*

A *Sewage piping system* , which allows for convenient drawing of installations for both internal and external sewage with automatic insertion of appropriate fittings (DN32 - DN500) has been added to the program.

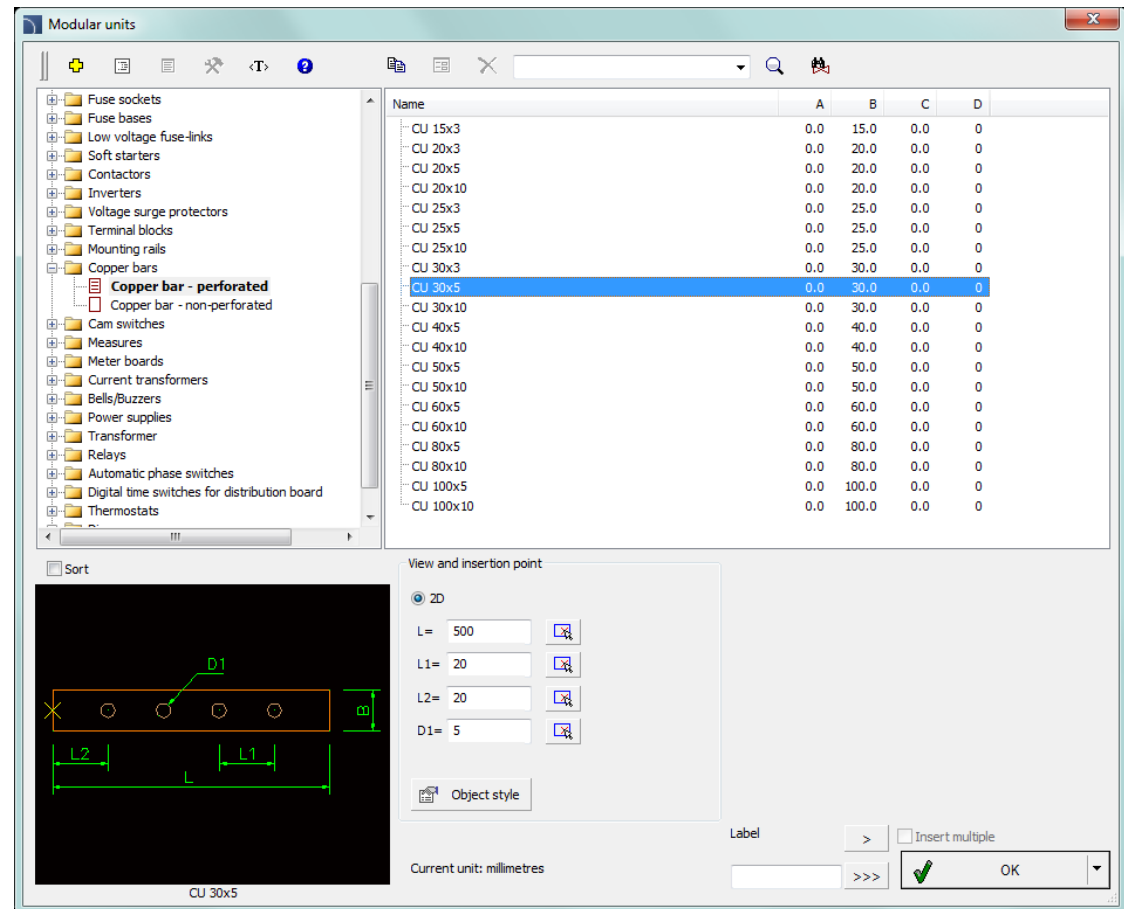
Sewage piping system can be drawn in detailed views and in various schematic views.



## ✓ CADprofi Electrical – extension of the library of symbols and the modular apparatus

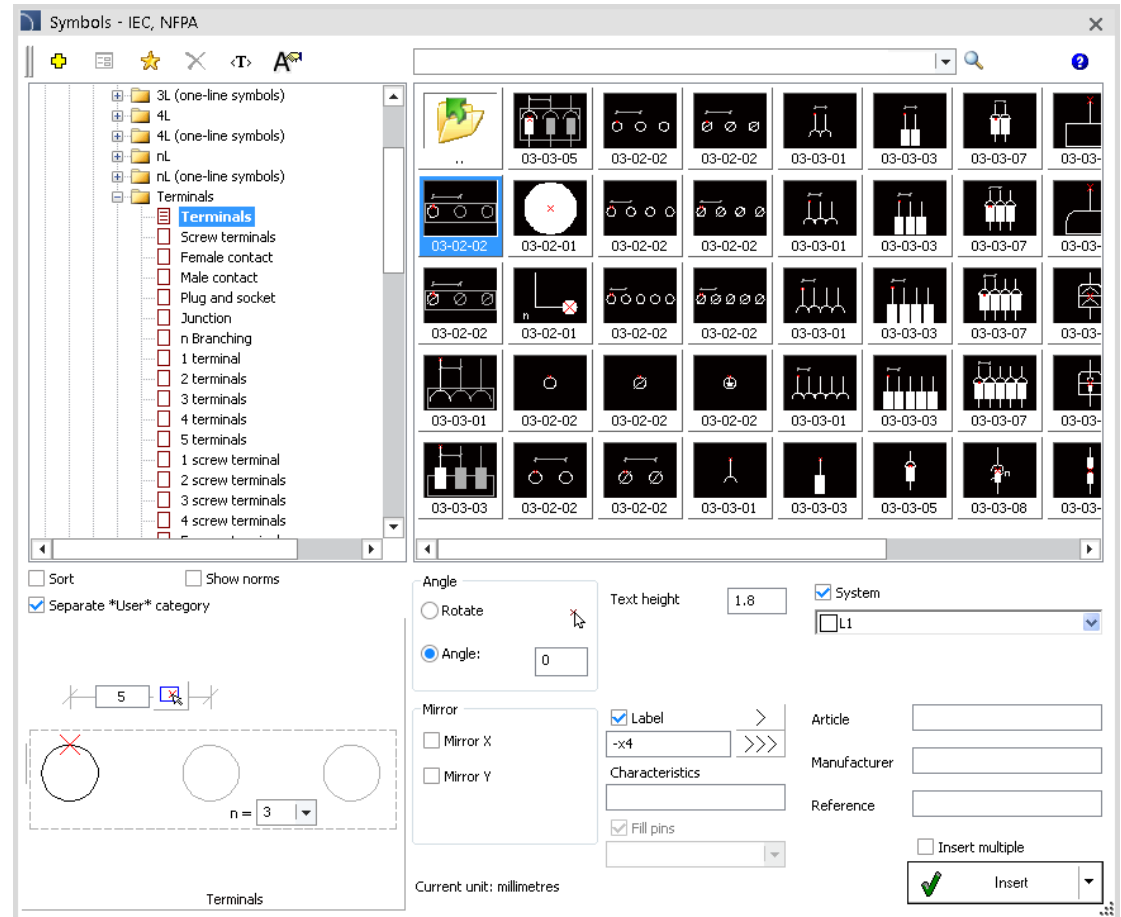
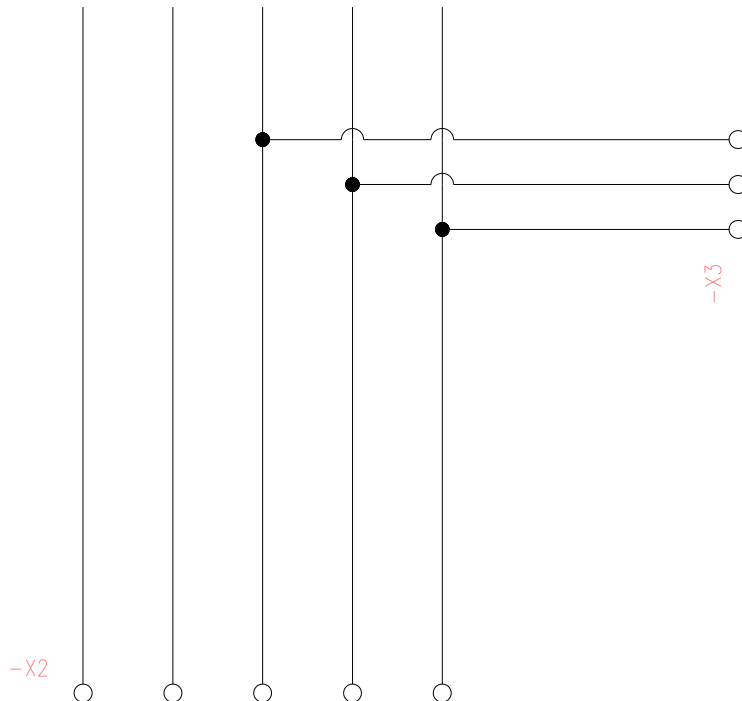
Additional symbols and elements from the modular apparatus has been added to the program, including:

- 1-phase and 3-phase electricity meter.
- Meter and dial boards.
- Mounting rails DIN TH35.
- Busbars.
- Terminal blocks.
- Telecommunication parallel joint.



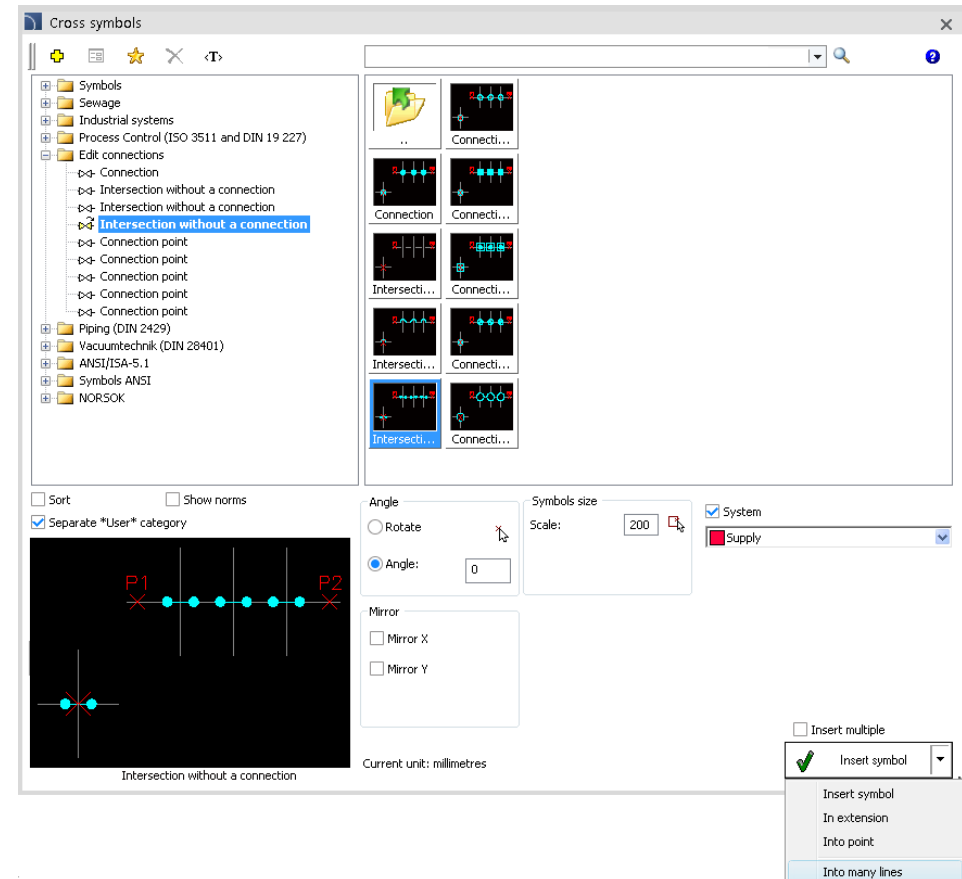
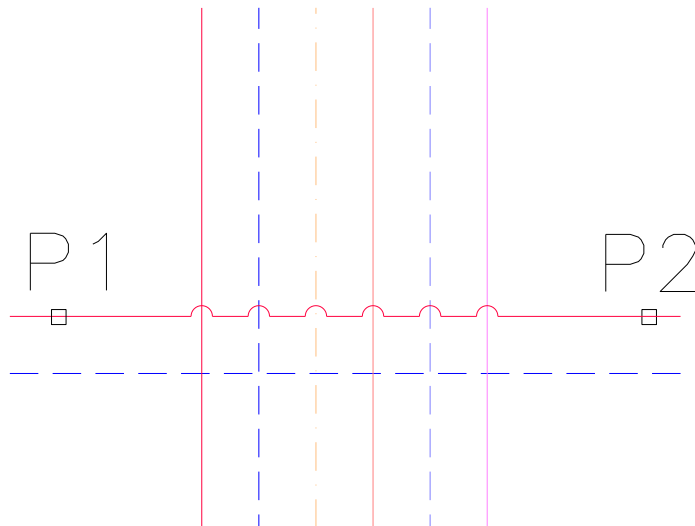
## ✓ CADprofi Electrical – parametrical symbols of terminals

In the new version of the program, symbols of terminals are parameterized so it's possible for example to insert a terminal block with any number of terminals and with any spacing between them.



## ✓ Edition of connections of schematic lines

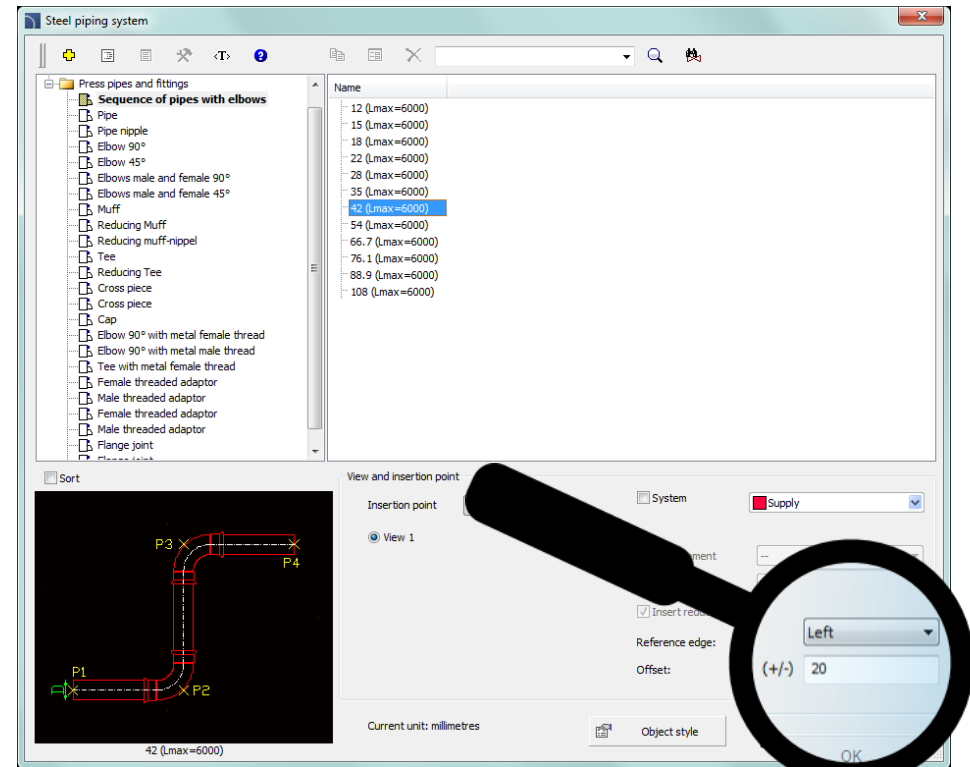
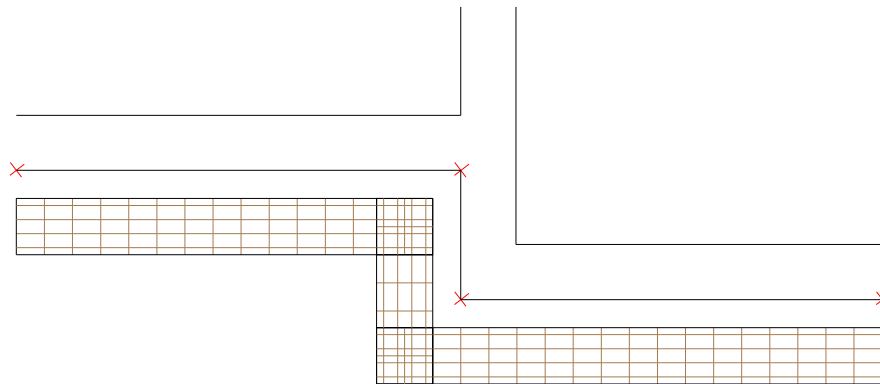
The possibility to easily edit the line intersections has been added to the program. Appropriate intersection symbols "with connection" and "without connection" can be found in the program libraries in the *Edit connection* category. In case of selecting the *Into many lines* option it is possible to quickly edit multiple intersecting lines.





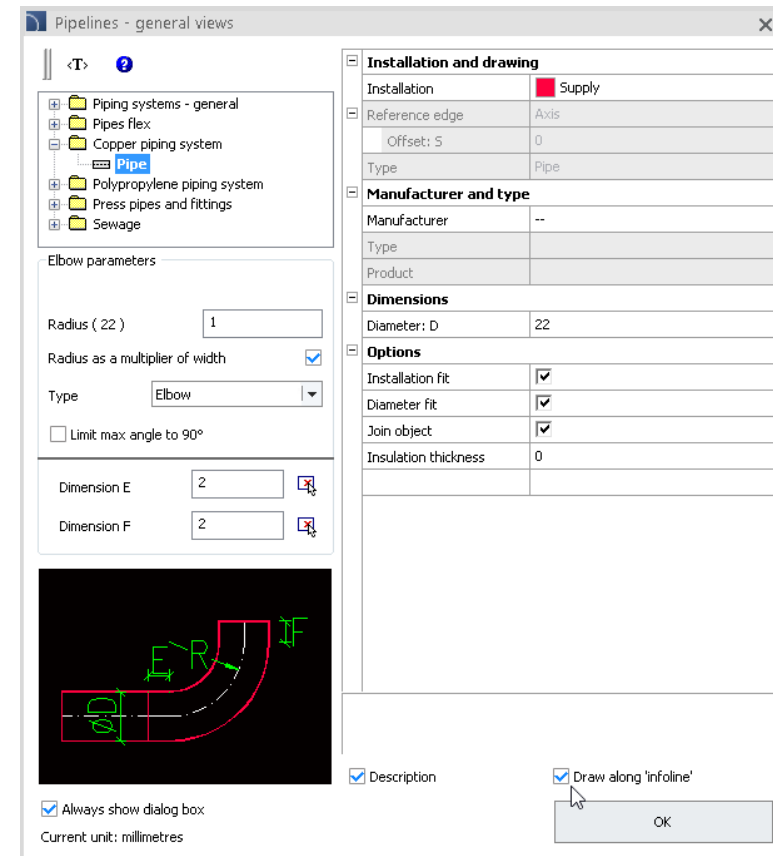
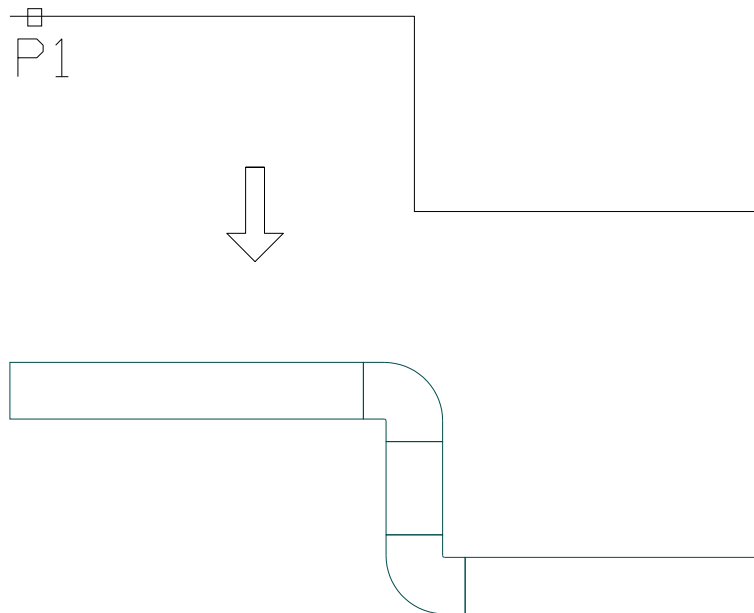
## ✓ Drawing strings of installations with an offset

Until now it was possible to draw installations only along the axis. Currently, the program allows user to specify the reference edge (axis, left, right) and an offset of the drawn string from the actually indicated points. This facilitates the design of such strings along the walls or other installations.

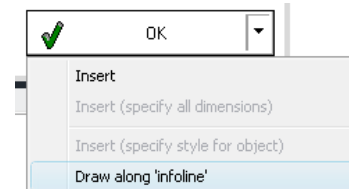


## ✓ Drawing installations along the 'infoline'

New program version allows to quickly draw installations sequences along the selected „infoline” (polyline or several linked lines). This option is very useful, e.g. in the case of creating detailed technical projects on the basis of initial drawn "single-line". Drawing along the "infoline" is available in various libraries of products, for both general and detailed views for piping installations, ventilation installations and cable routes.

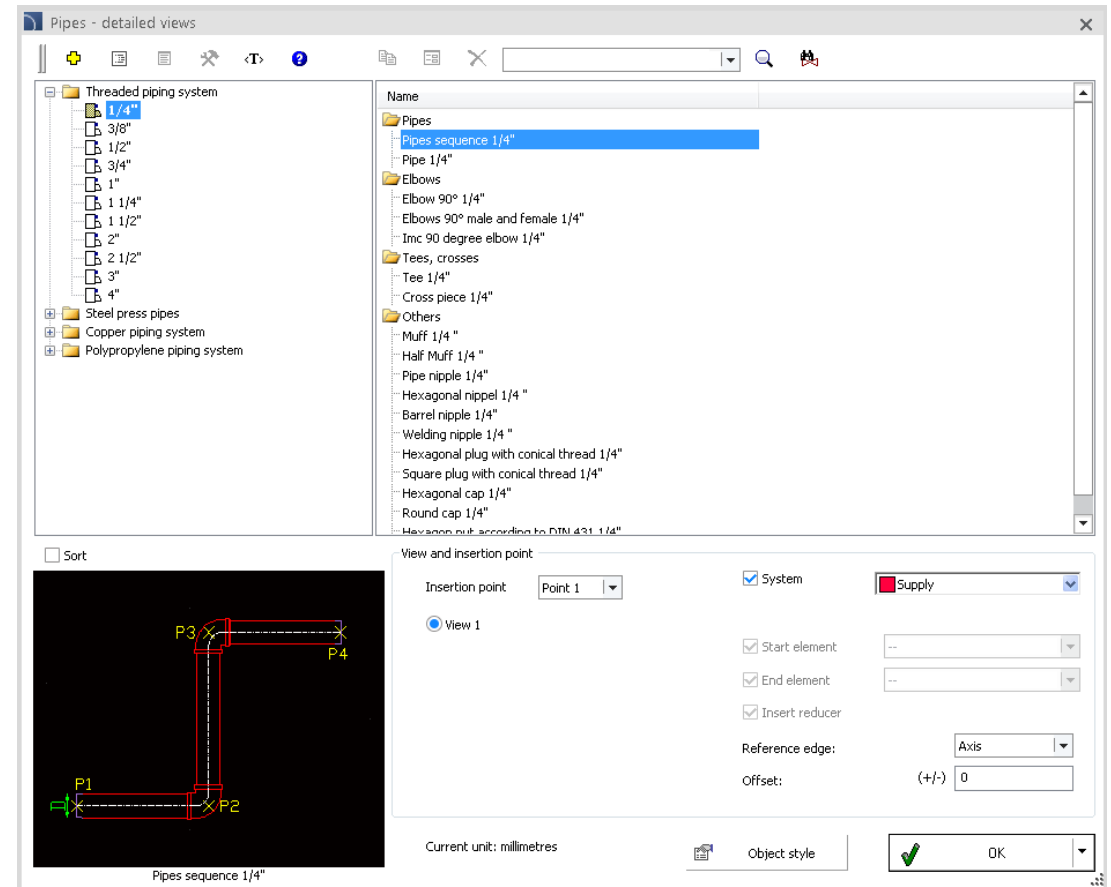
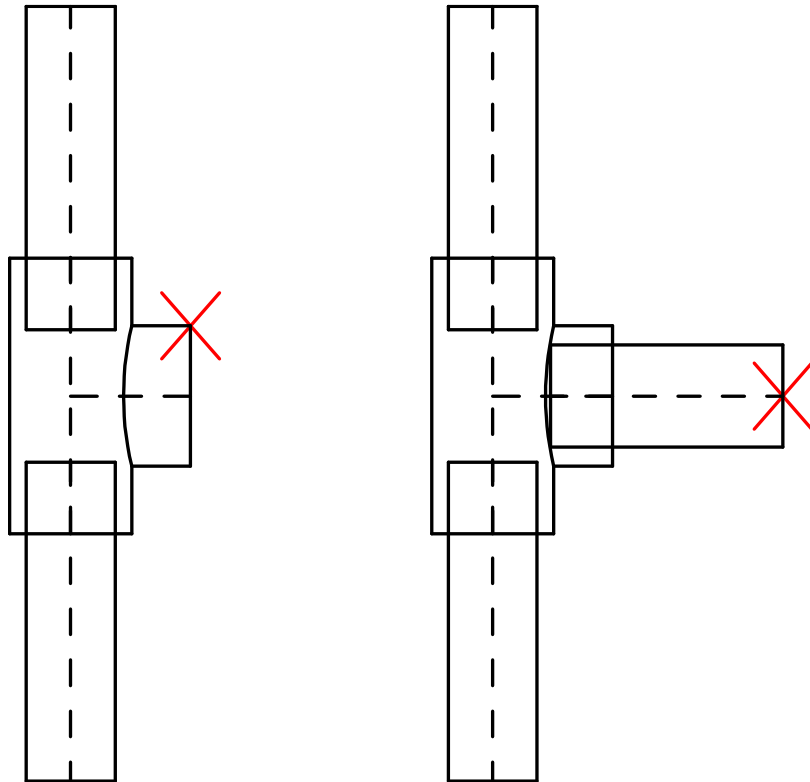


*Expandable button  
in the libraries of products*



## ✓ Drawing strings of installations with connection to the specified object

Currently when user starts drawing a new installation string he can specify an existing object from the drawing. If this object "fit" to the newly created string then program will automatically connect the string to the indicated object and will continue drawing the installation with an appropriate angle.

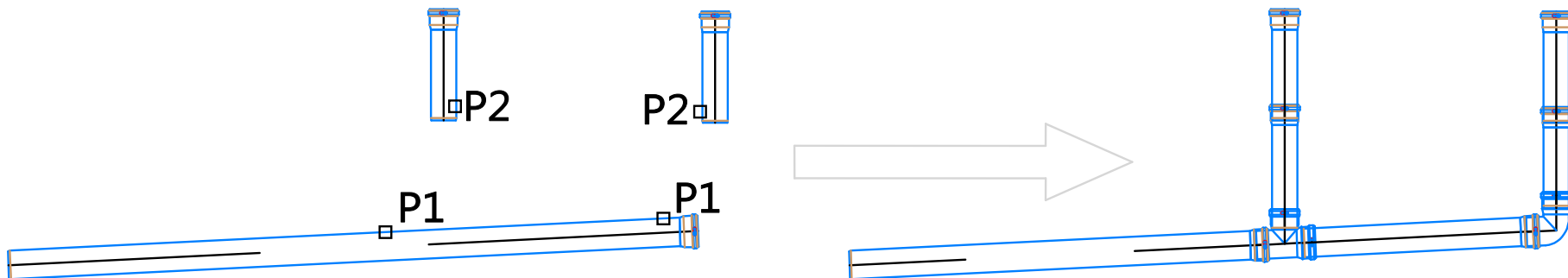
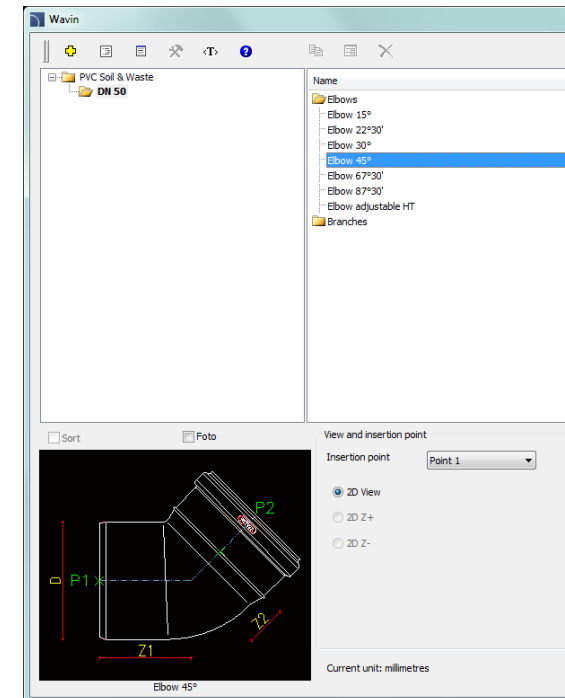


## ✓ Joining elements of installations from manufacturers libraries and CADprofi catalogs

In earlier versions of CADprofi it was possible to automatically connect simplified views of pipelines, ventilation ducts or cable trays. New version of the program allows for easy connection of detailed elements from manufacturers libraries or CADprofi catalogs.

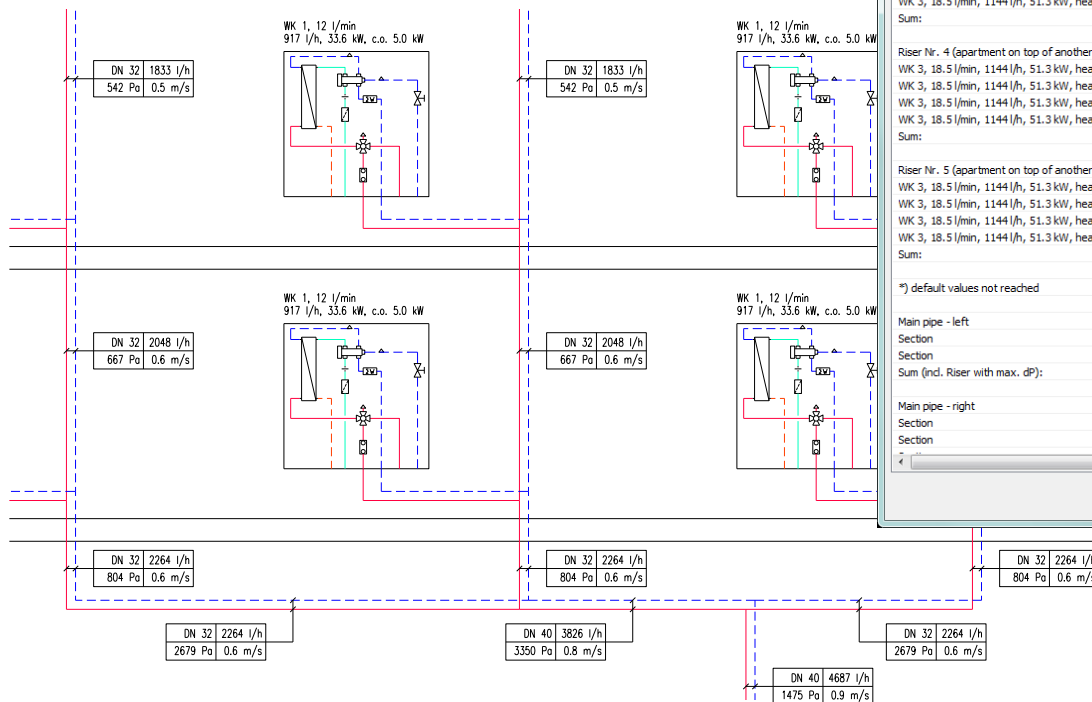
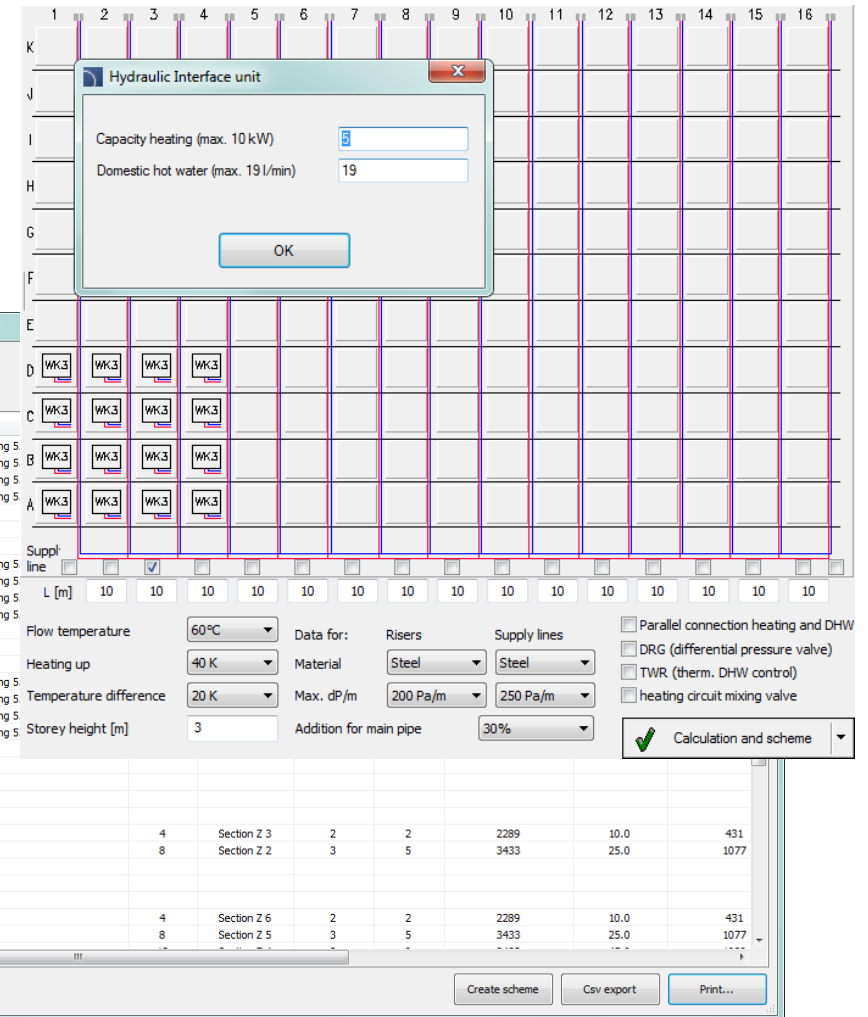
Connections can be implemented in several ways:

- During the insertion of the selected fitting to the drawing. In this case after attaching the fitting to the selected element (P1) it is possible to indicate another element (P2). If the indicated elements are "compatible" then the program will connect them.
- With the help of the "Join general elements" command. In this case program automatically selects the appropriate elbow and connects indicated elements.
- With the help of the "Join detailed elements". After indicating the first element program will display dialog window with the matching fittings. After selecting the desired fitting user must indicate element for which the connection will be made.



## ✓ Hydraulic calculations and automatic drawing of diagrams in KaMo/Delta

- Instant selection of receivers (hydraulic interface units) in the dialog window where user can specify up to 16 risers and 11 storeys.
- Determination of central heating power and efficiency of hot tap water for receivers.
- Determination of way of calculation and general installation parameters.
- Possibility to choose the type of pipes for risers and power cables.
- Full hydraulic calculations with specifying the pressure drop, flow and pipe diameters.
- Calculation of the power of the heating source and the power peak for the need of the hot tap water. Choice of the buffer size.
- Choice of the buffer circulation and charging pump.
- Choice of the optional mixing valve.
- Automatic drawing of installations diagrams.
- Specifications of the quantity of pipes.

**Hydraulic Interface unit**

Capacity heating (max. 10 kW): 5  
Domestic hot water (max. 19 l/min): 19  
OK

**Data printing from current drawing**

Heat exchanger type  
WK 3, 18.5 l/min, 1144 l/h, 51.3 kW, heating 5  
WK 3, 18.5 l/min, 1144 l/h, 51.3 kW, heating 5  
WK 3, 18.5 l/min, 1144 l/h, 51.3 kW, heating 5  
WK 3, 18.5 l/min, 1144 l/h, 51.3 kW, heating 5  
Sum:

Riser Nr. 4 (apartment on top of another)  
WK 3, 18.5 l/min, 1144 l/h, 51.3 kW, heating 5  
WK 3, 18.5 l/min, 1144 l/h, 51.3 kW, heating 5  
WK 3, 18.5 l/min, 1144 l/h, 51.3 kW, heating 5  
WK 3, 18.5 l/min, 1144 l/h, 51.3 kW, heating 5  
Sum:

Riser Nr. 5 (apartment on top of another)  
WK 3, 18.5 l/min, 1144 l/h, 51.3 kW, heating 5  
WK 3, 18.5 l/min, 1144 l/h, 51.3 kW, heating 5  
WK 3, 18.5 l/min, 1144 l/h, 51.3 kW, heating 5  
WK 3, 18.5 l/min, 1144 l/h, 51.3 kW, heating 5  
Sum:

\*) default values not reached

Main pipe - left  
Section 4  
Section 8  
Sum (incl. Riser with max. dP):

Main pipe - right  
Section 4  
Section 8

Flow temperature: 60°C  
Heating up: 40 K  
Temperature difference: 20 K  
Storey height [m]: 3

Data for: Risers  
Material: Steel  
Max. dP/m: 200 Pa/m  
Addition for main pipe: 30%

Supply lines: Steel  
Max. dP/m: 250 Pa/m

Parallel connection heating and DHW  
DRG (differential pressure valve)  
TWR (therm. DHW control)  
heating circuit mixing valve

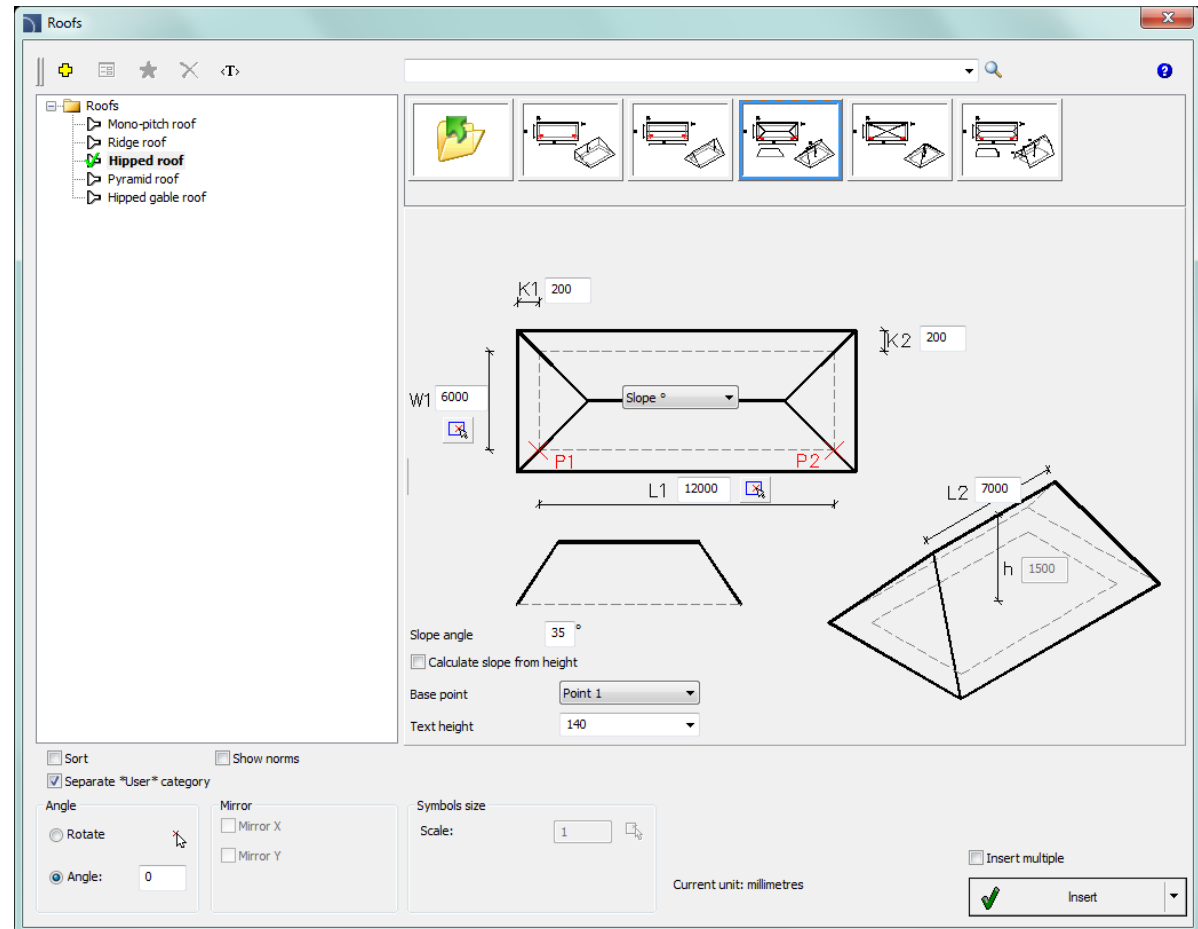
Calculation and scheme

Create scheme  
Csv export  
Print...

Hydraulic calculations and automatic drawing of installations is available in the **KaMo** and **Delta Systemtechnik** libraries.

## ✓ CADprofi Architectural – new command *Roofs*

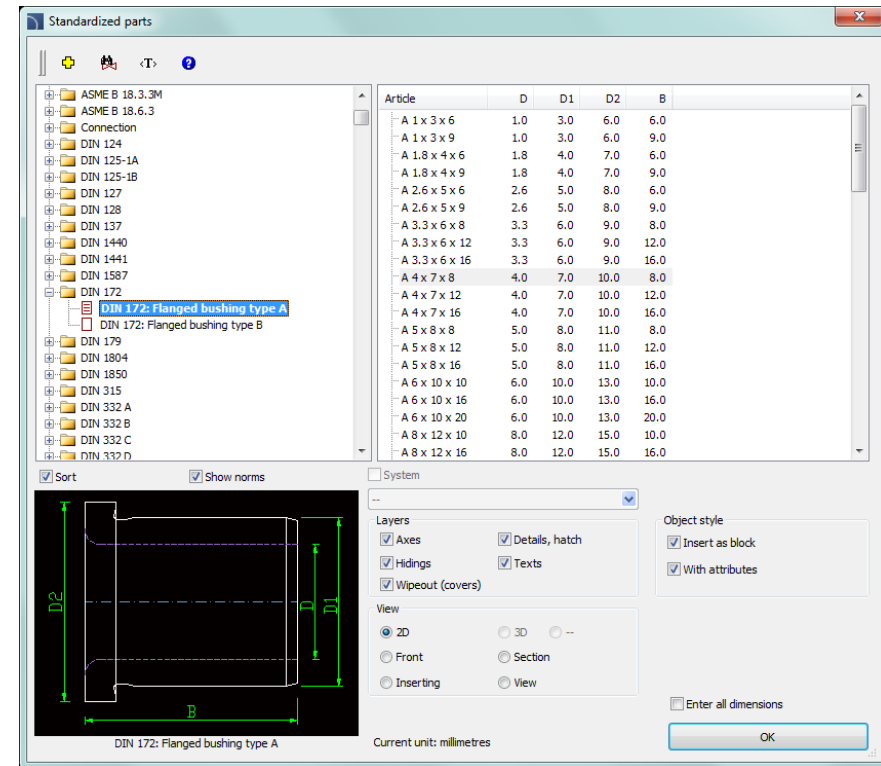
The *Roofs* command allows to insert roofs views with the most commonly used shapes. For each roof the tracts surface is calculated, as well as, roof slope or height.



## ✓ CADprofi Mechanical – additional PN, EN, DIN, ISO and GOST standards

New standardized elements have been added to the program, including:

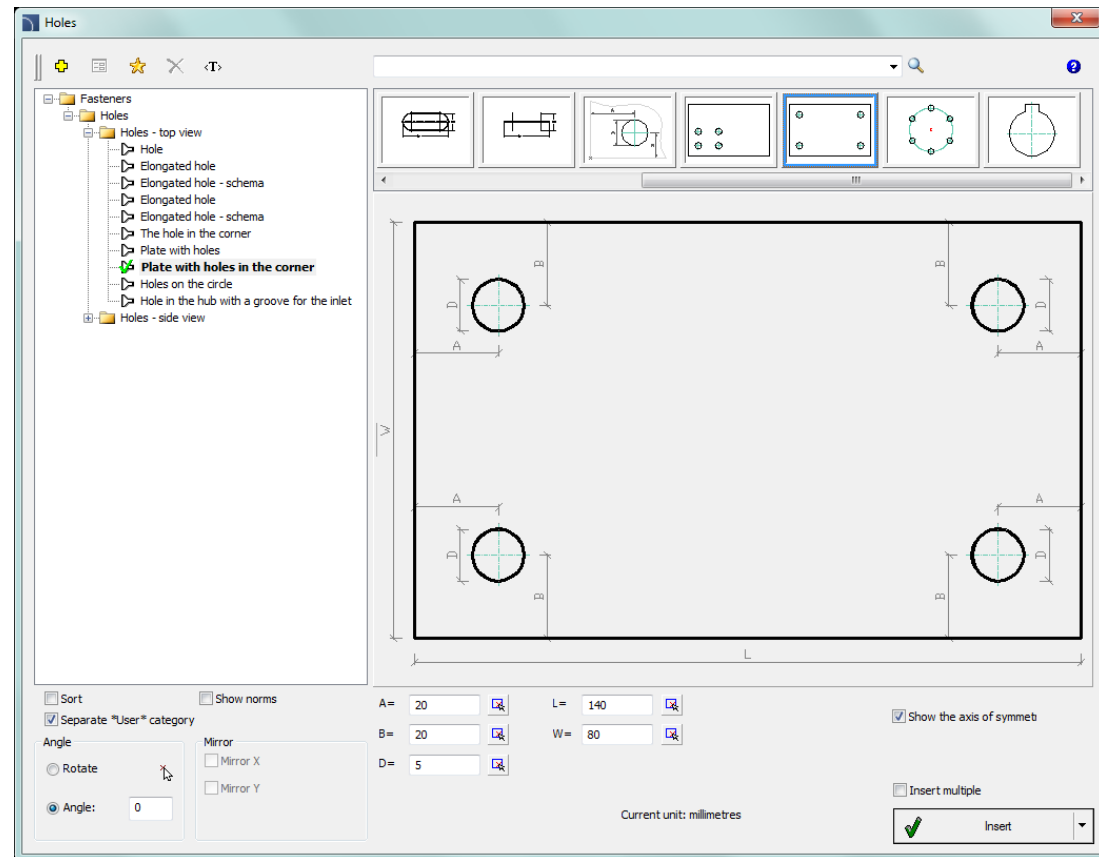
- Slotted set screws with flat point
- Slotted set screws with cup point
- Steel round head rivets
- Centering hole type A, B, C, R, D
- Seal type O (O-rings)
- Radial Oil Seal type A, AS
- Retaining ring type A, B
- Flanged and cylindrical bushing
- Rolling bearing - Locknuts
- Slotted Round Nut
- Parts ending with outer thread



## ✓ CADprofi Mechanical – extended content of the *Holes* command

Additional elements have been added to the command:

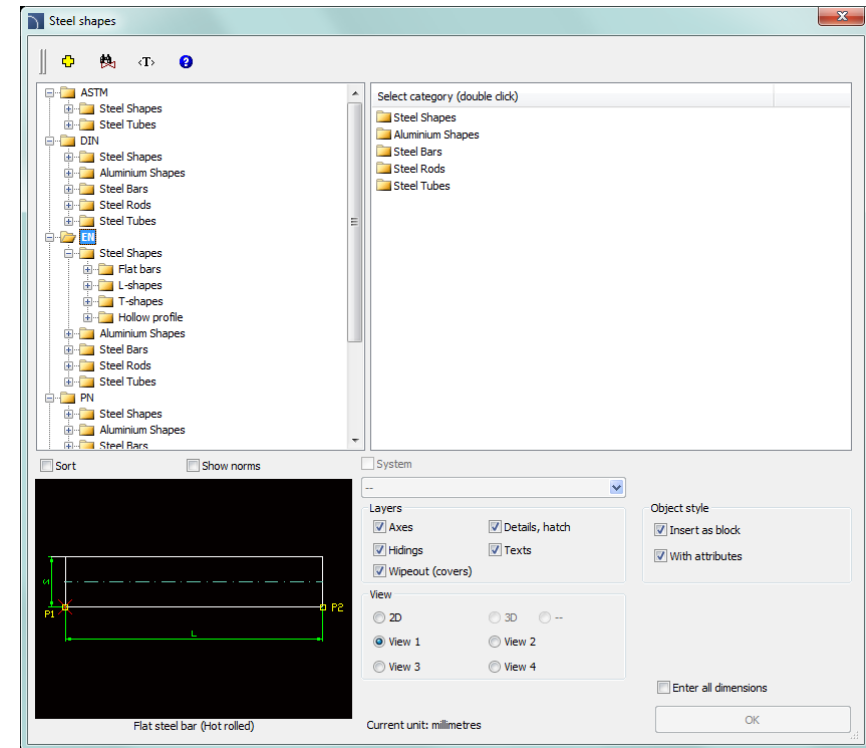
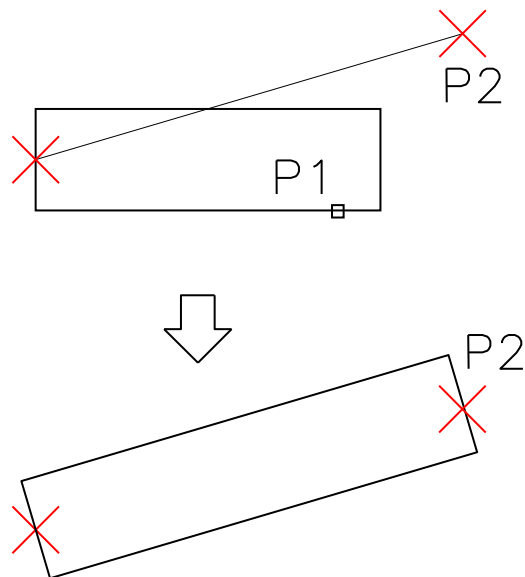
- The hole in the corner.
- Plate with holes.
- Plate with holes in the corner.
- Holes in the circle.
- Holes in the hub with a groove for the inlet.





## ✓ CADprofi Mechanical - dynamic extension of steel profiles

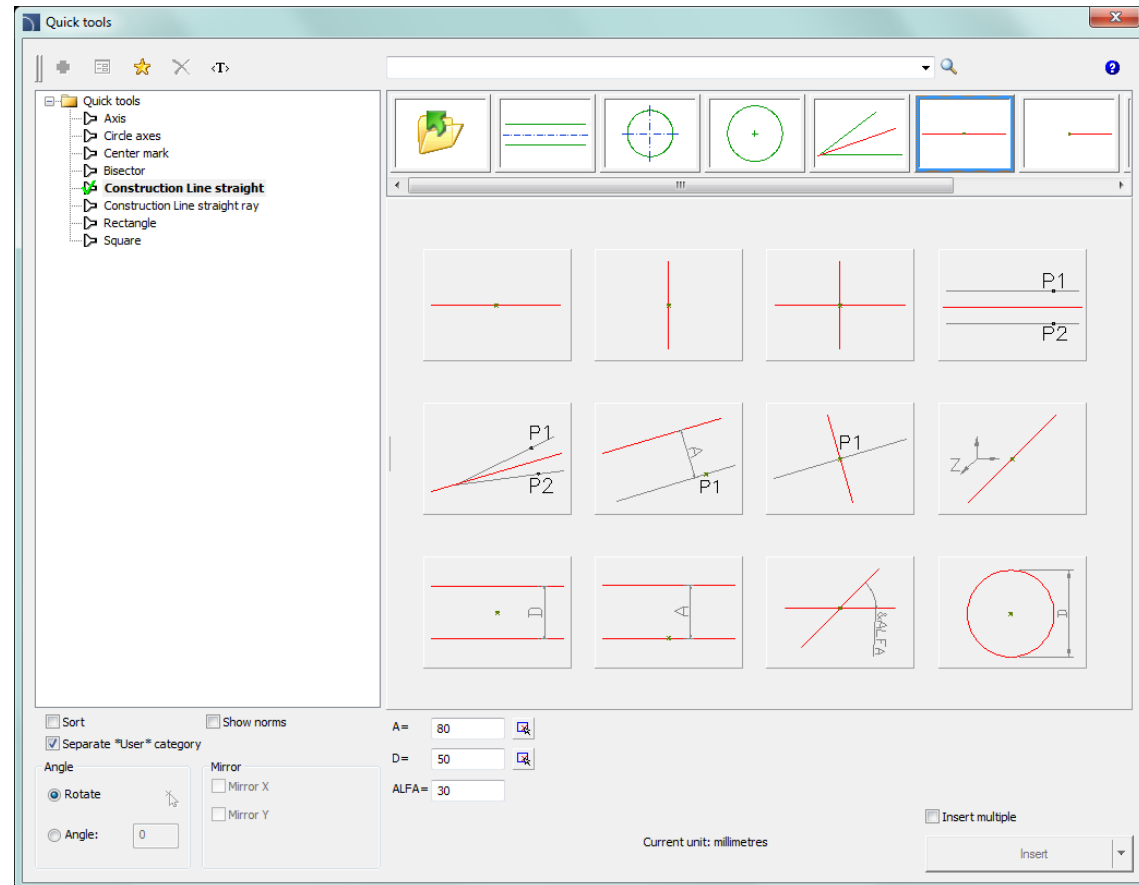
In the new program version it is possible to dynamically edit steel profiles with the help of the *Edit symbols* command. After running the command and selecting the steel profile (point 1) it is possible to dynamically change the position and the length of the steel profiles (point 2). In the selected CAD programs it is possible to visually track the current location of the object (ie. "visualize" the edition process).



## ✓ Extended content of the *Quick tools* command

The *Quick tools* command has been extended with the opportunity to insert construction lines (straight and rays) to the drawing.

Additionally, a possibility to quickly insert into the drawing squares and rectangles (with a convenient determination of dimensions and the insertion point) has been added to the command.

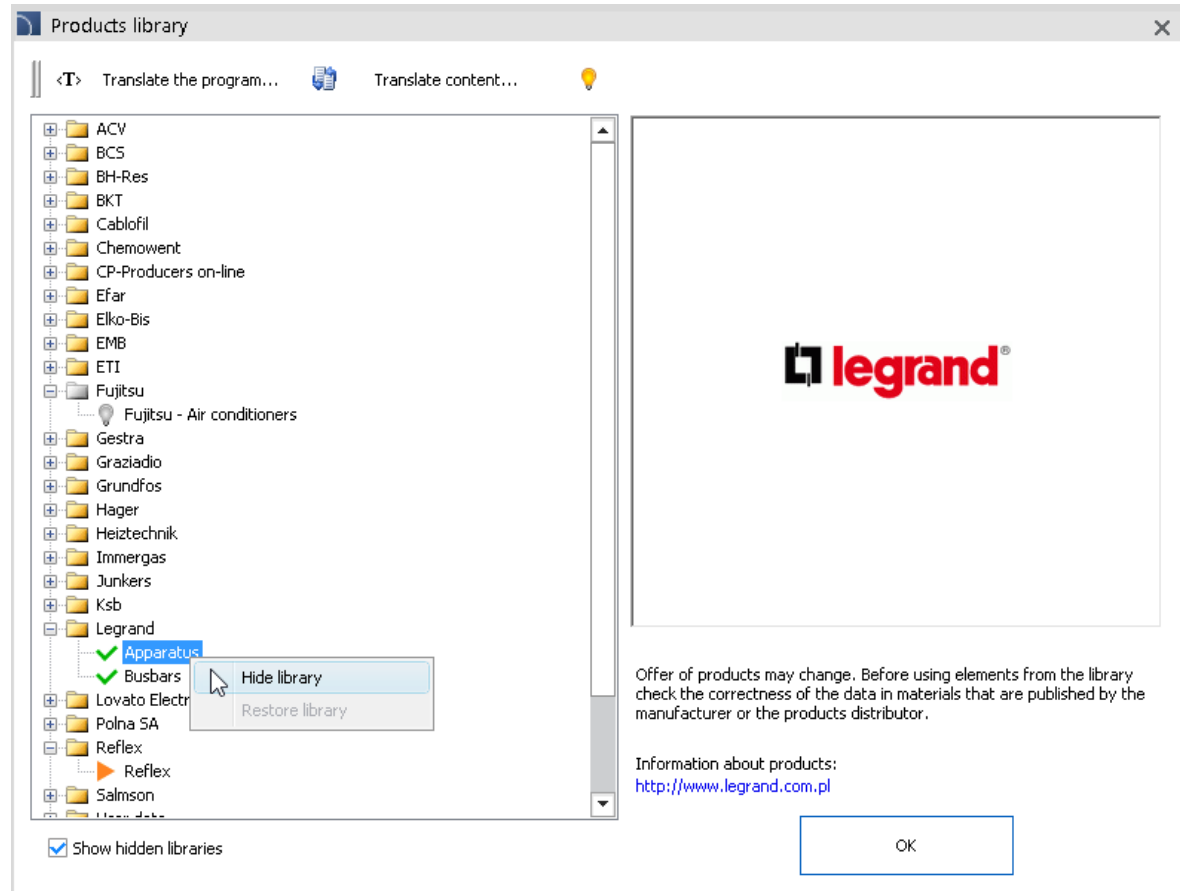


## ✓ Management of the library of products

New libraries products that are prepared with manufacturers of various devices from many industries are constantly added to the program. In new version of the program user can hide libraries, which he is not using in his daily work. Thanks to this the library selection window is more transparent and suited for the user needs.

All libraries can be shown after selecting the *Display hidden libraries* option. In the dialog window user is informed for which libraries the updates are available, as well as which libraries can be downloaded from the CADprofi server. (e.g. additional hidden libraries that were published after the installation of the program).

Hidden libraries are not included in the online updates, thanks to which the amount of data needed to update the program.

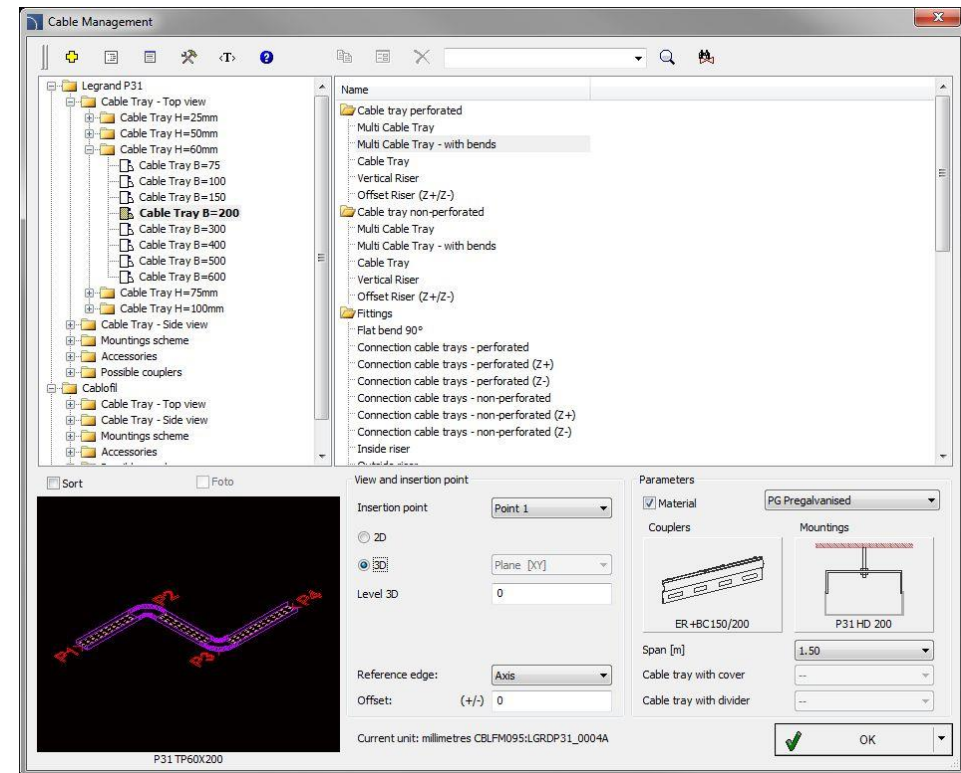
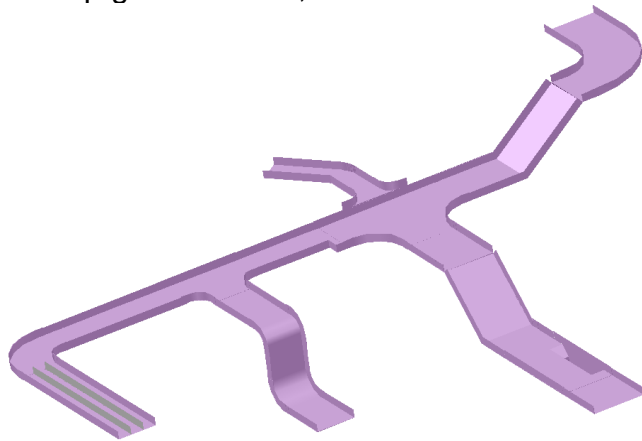


## ✓ New library of 2D and 3D Legrand and Cablofil cable trays

New library of Legrand Cable Management contains a system of Cablofil mesh trays and Legrand P31 sheet metal trays. Library contains:

- Mesh cable trays.
- Sheet metal trays with and without perforation.
- Elbows, tees, cross pieces, branch pieces, reductions etc.
- Fasteners, mountings, covers, dividers, accessories.
- Product are available in 2D and 3D views.

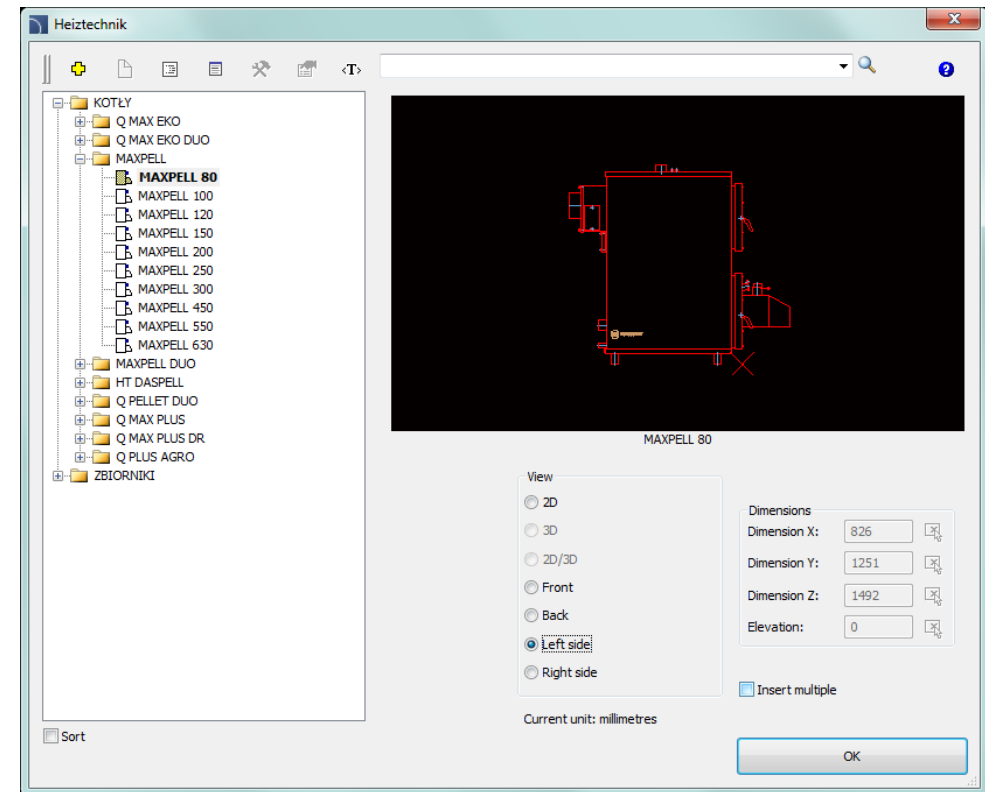
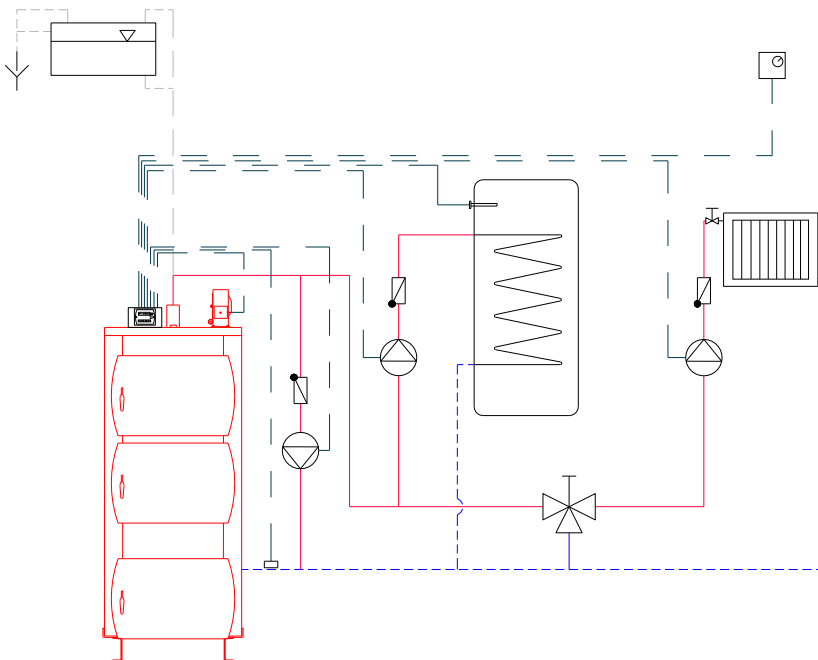
Program allows for easy and quick design of cable tray routes in various technologies: continuous galvanisation, hot dip galvanisation, electrozinc or stainless steel.



## ✓ New library of Heiztechnik products

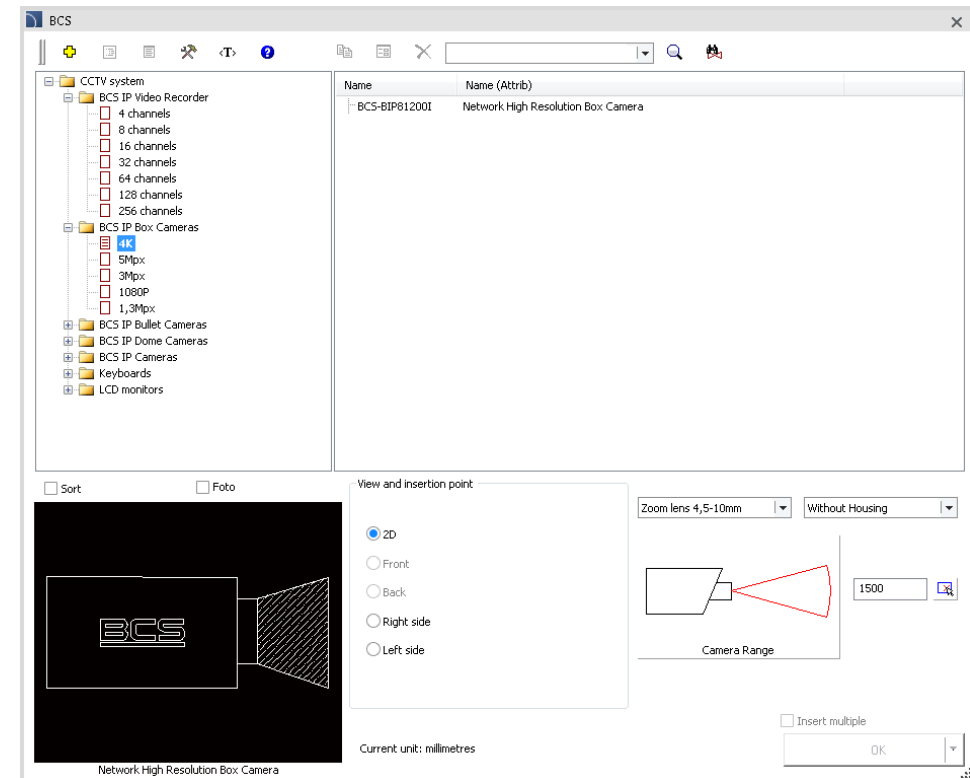
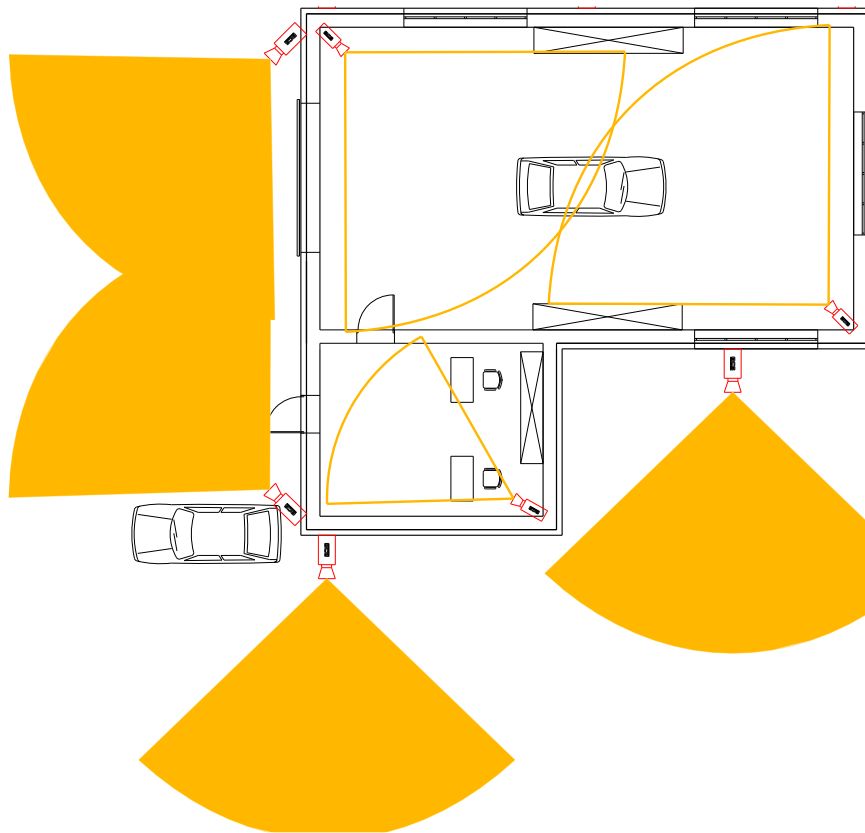
New library of *Heiztechnik* contains heating boilers used for solid fuel combustion. Boilers for wood, biomass and pellets, as well as, tanks for pellets are available.

Library also contains ready-made boiler schemes with selection depending on the used controller.



## ✓ New library of BCS products

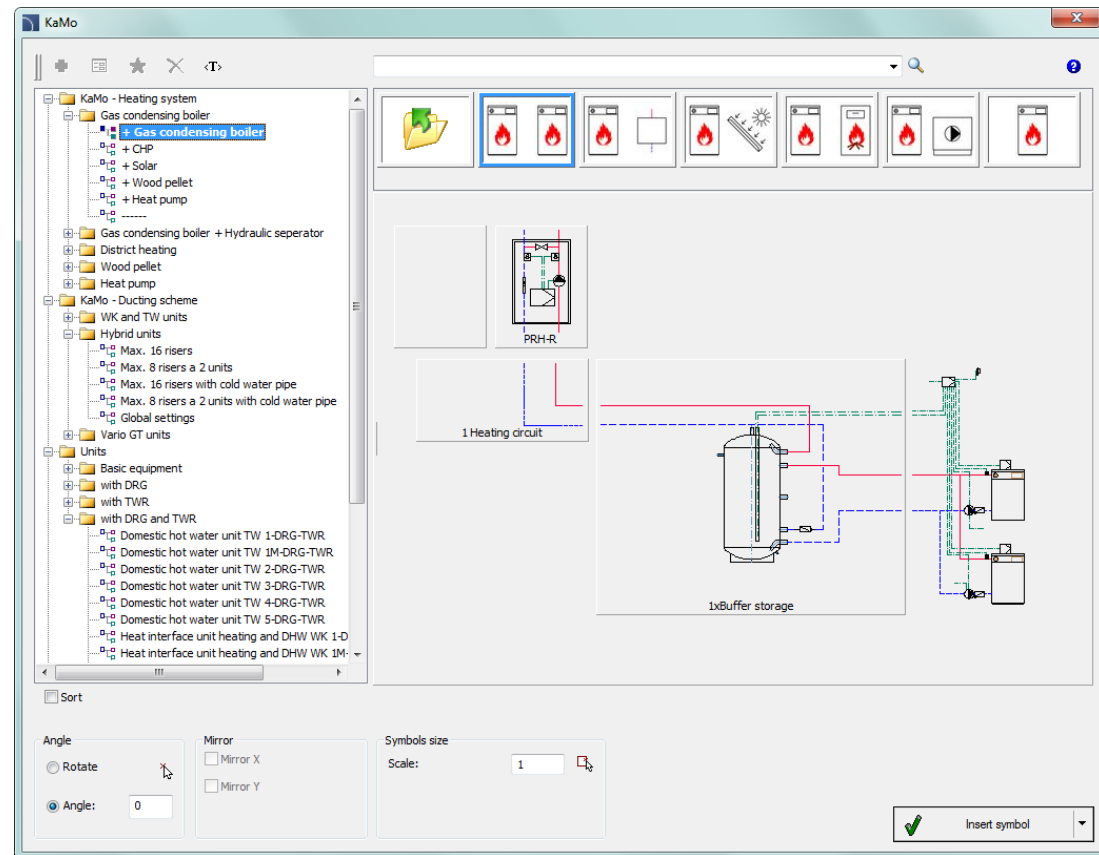
New library of *BCS* helps in designing of IP video monitoring installations.



## ✓ New libraries of KaMo and Delta Systemtechnik

Kamo and Delta Systemtechnik libraries allow for complex design of installations with usage of housing stations. Program performs hydraulic calculations and automatically draws installations.

Library also contains boilers and heat centers diagrams with the ability of choosing the heat buffers that are linked in series or in a Tichelmann system (reverse-return system).

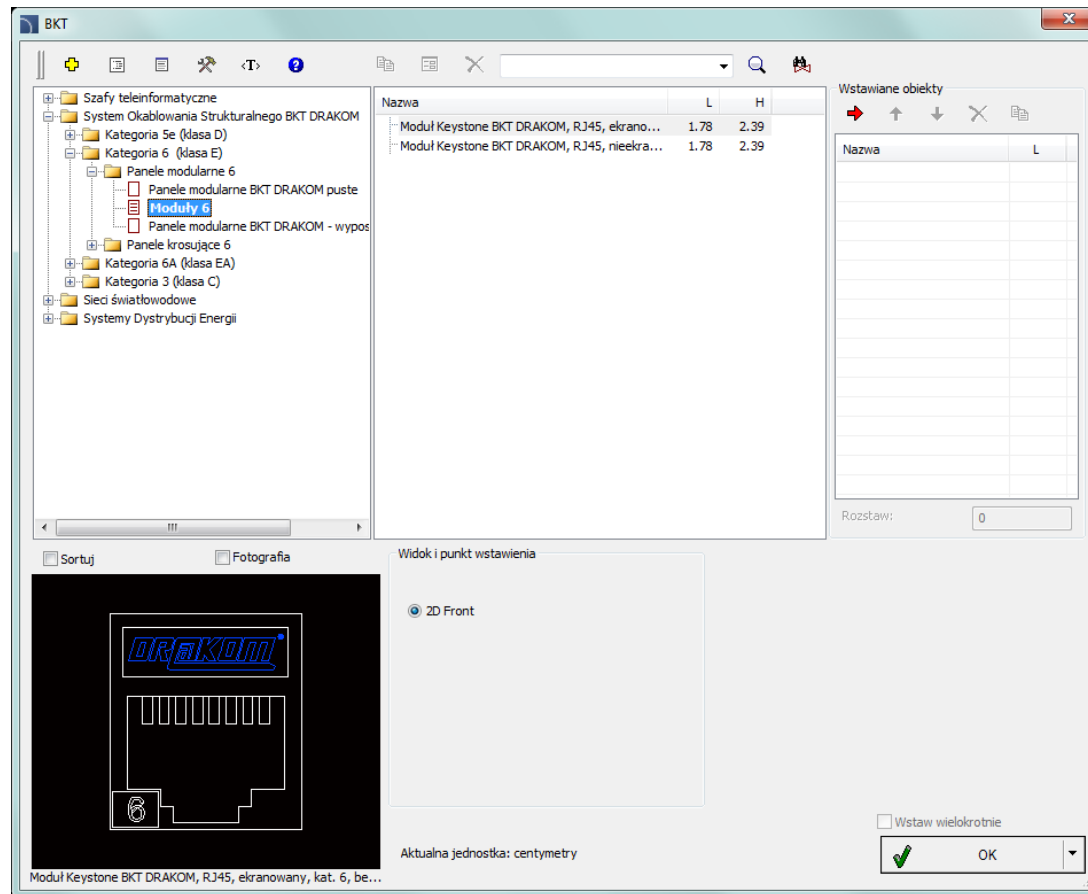


## ✓ New BKT Elektronik library

New library of *BKT Elektronik* that enables the design of data telecom (ITC) cabinets with elements of structured cabling has been added to the program.

The manufacturer has got in his offer elements in both copper and fiber technology.

Such elements like data telecom (ICT) cabinets, panels and structured cabling, as well as elements of fiber optic equipment can be found in the library.







# CADprofi

- ✓ Update of manufacturers' libraries:





# CADprofi

## ✓ Windows 10

Current CADprofi version has been tested in the latest Windows 10 operating system.

Users who plan to move to the latest Microsoft system can do it without any fear of working with CADprofi.

Tested on



## Windows 10



# CADprofi

## ✓ Adjustment to many base CAD programs

CADprofi 12 has been adjusted to work with latest CAD programs, including: AutoCAD 2016, ARES Commander Edition 2015, BricsCAD V16, progeCAD 2016, ZWCAD Classic, CADMATE.

CADprofi 12 currently works with many base CAD programs including: AutoCAD (since the 2000 version), BricsCAD, GstarCAD, IntelliCAD, progeCAD, ZWCAD, ARES Commander Edition and others.

The AutoCAD logo, featuring the word 'AutoCAD' in red with a registered trademark symbol.

The ZWCAD logo, featuring the word 'ZWCAD' in blue with a green plus sign.

The GstarCAD logo, featuring the word 'GstarCAD' in blue and yellow, with the tagline 'An Alternative CAD System' below it.

The BricsCAD logo, featuring a blue stylized 'B' and the word 'BRICSCAD' in black.

The progeSOFT logo, featuring a blue sphere with a yellow 'I' and the word 'progeSOFT' in blue.

The IntelliCAD logo, featuring a purple diamond with a yellow 'I' and the word 'IntelliCAD' in purple.