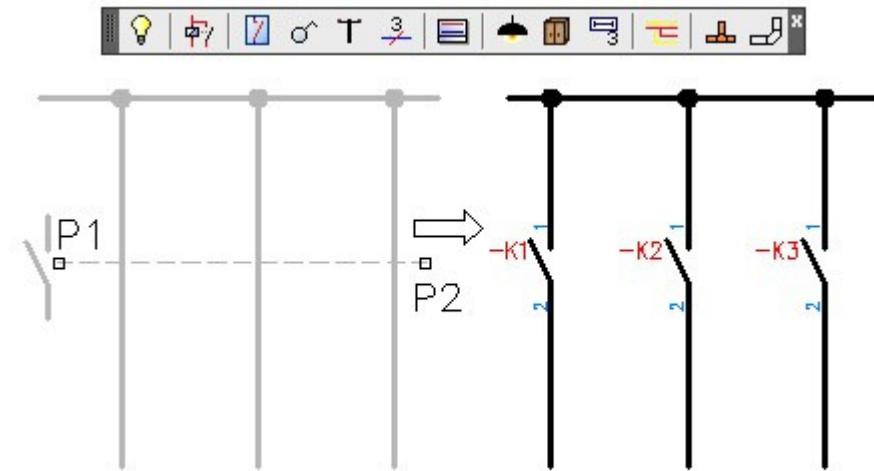




# **CADprofi 7**

## ✓ Automatic labels numbering during inserting many symbols

CADprofi 7 introduced automatic label numbering when inserting single symbols. New version also works while inserting many symbols, for example in option „insert into many lines” or when the option „insert multiple” is turned on.

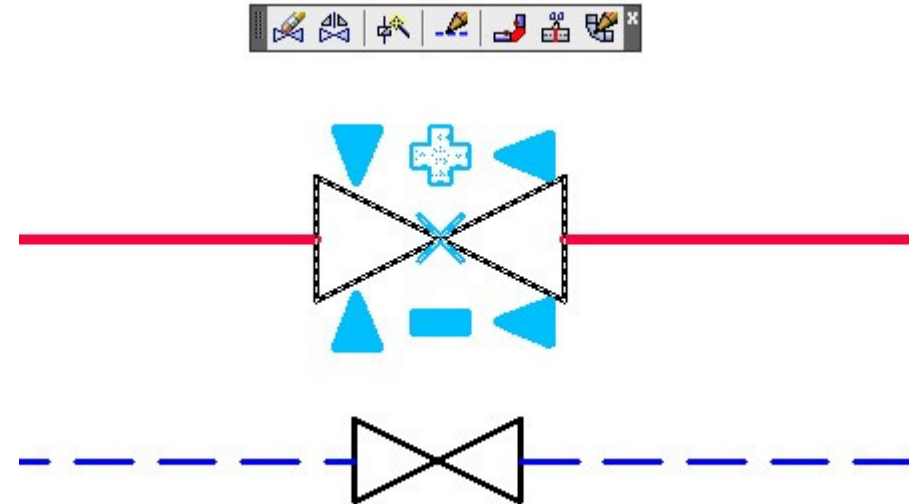


## ✓ Symbols dynamic scaling

In the command that is used for dynamic editing (symbols reverse) we introduced the possibility of scaling symbols using tags „+” or „-” .

When you change the size of the symbols inserted in the cable our program automatically adjusts the connection points.

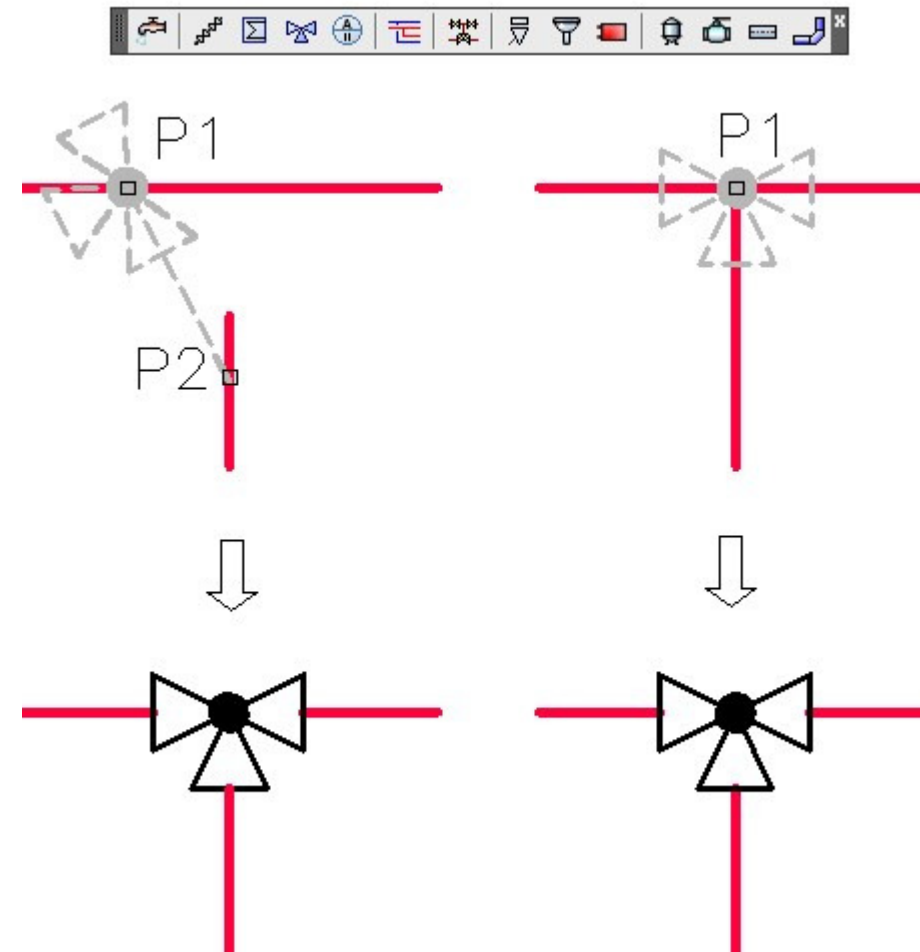
Dynamic scaling can be performed on most symbols except the CADprofi software symbols whose size is dependent on the physical dimensions of objects and isometric symbols.



## ✓ Improved inserting of cross symbols

In CADprofi software it is possible to insert cross symbols. So far, in order to insert a symbol in the crossing of two lines it was necessary to point the main line (P1) and then point the secondary line (P2). It was not possible to directly point the crossing point of two lines.

CADprofi 7.11 introduced automatic insertion of cross symbols with the ability to directly point the line crossing. We have also left the current mode, which simplifies inserting symbols in case when lines are not connected together (command makes it easier to attach these lines).



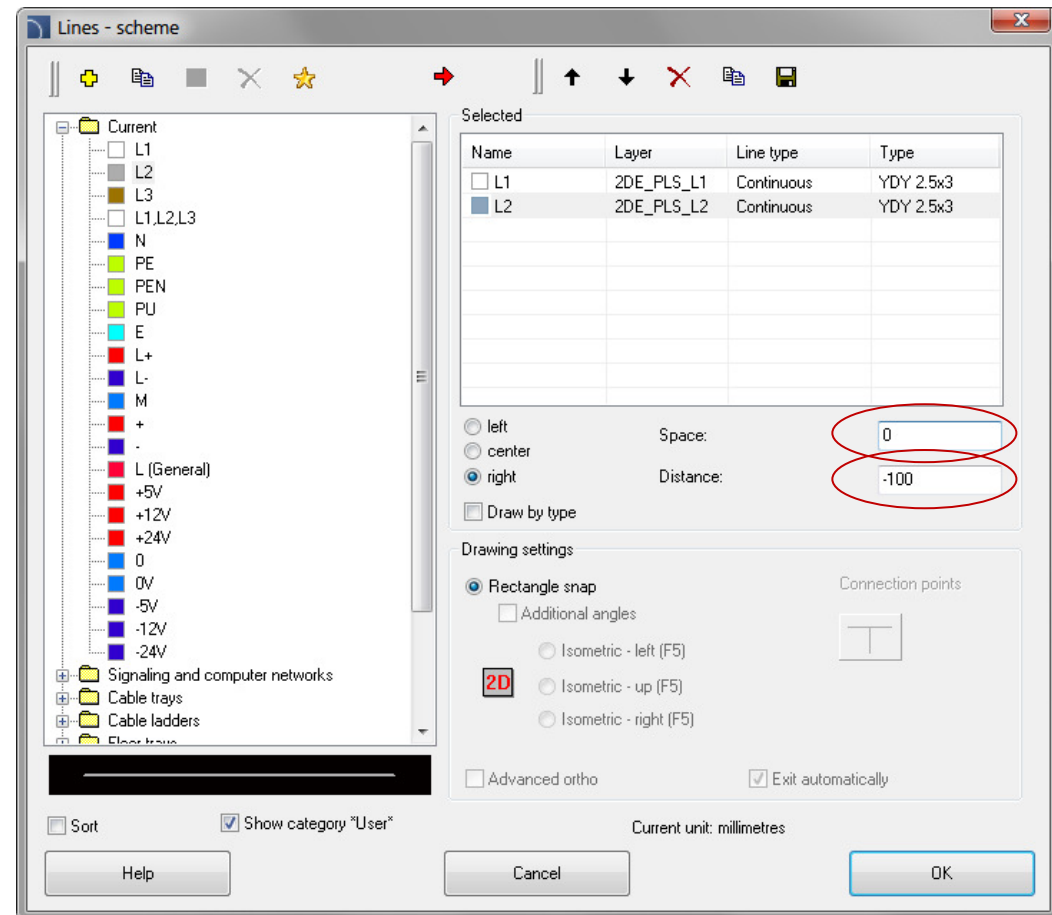
## ✓ Changes during schematic lines drawings

- **Space**

While drawing several lines we have introduced a possibility to put lines „one above the other”, with zero space

- **Distance**

In the command „Lines - scheme” it is possible to draw lines with specified distance. This option is used for example when drawing lines that run along the walls (designer shows points on the walls and then draws them with the distance). In CADprofi 7.11 we have introduced a possibility to draw lines with negative which can become useful for example when drawing lines that are routed inside the walls.

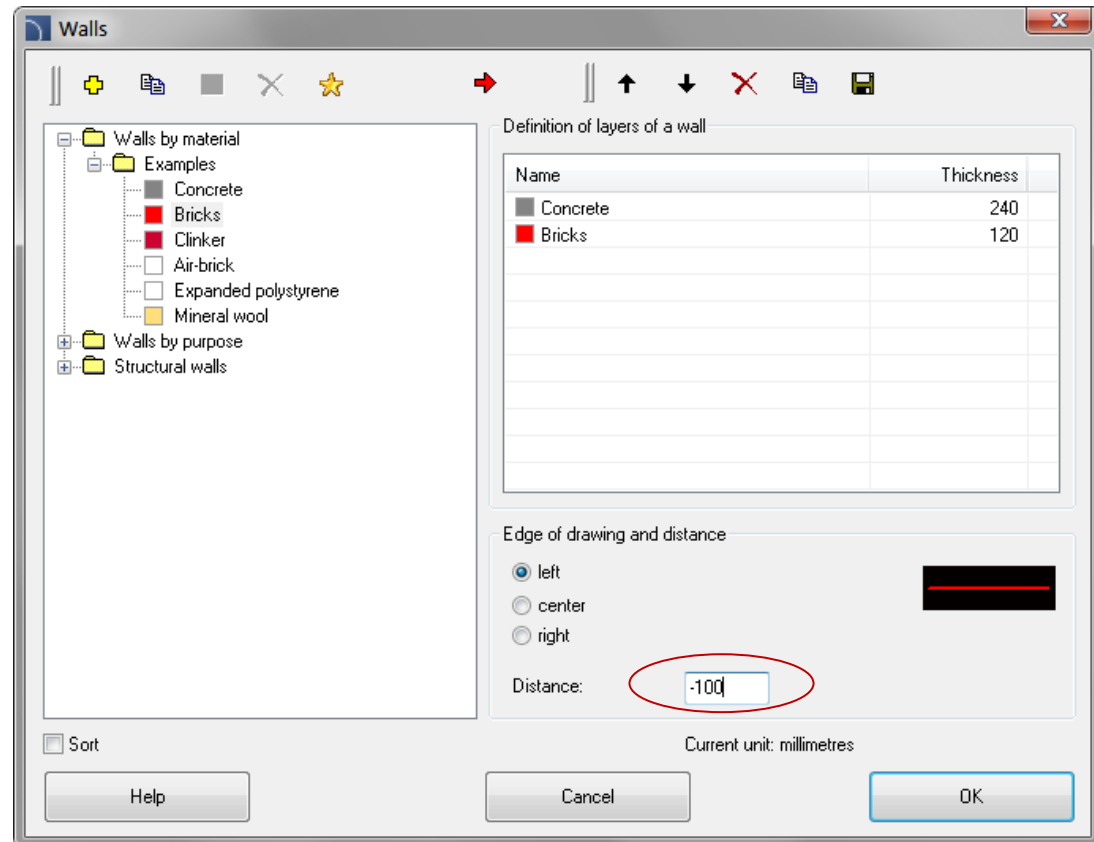


## ✓ Changes during walls drawing

- **Drawing with negative distance**

When drawing walls it is often necessary to draw the symmetry axis of the carrier layer which for a multi-layered wall is not located in the center of the wall.

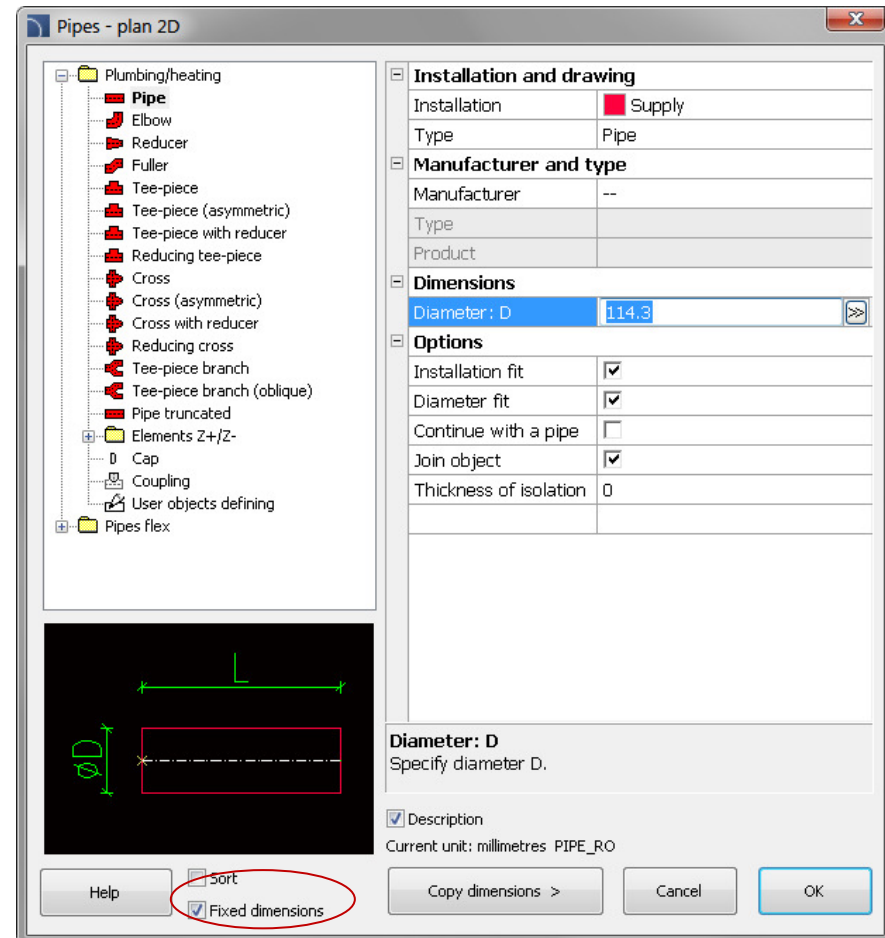
In CADprofi 7.11 we have introduced the possibility to draw walls with negative distance making it possible to implement such a distance that drawing takes place carrier layer symmetry axis.



## ✓ Fixed dimensions while drawing lines and 2D shapes

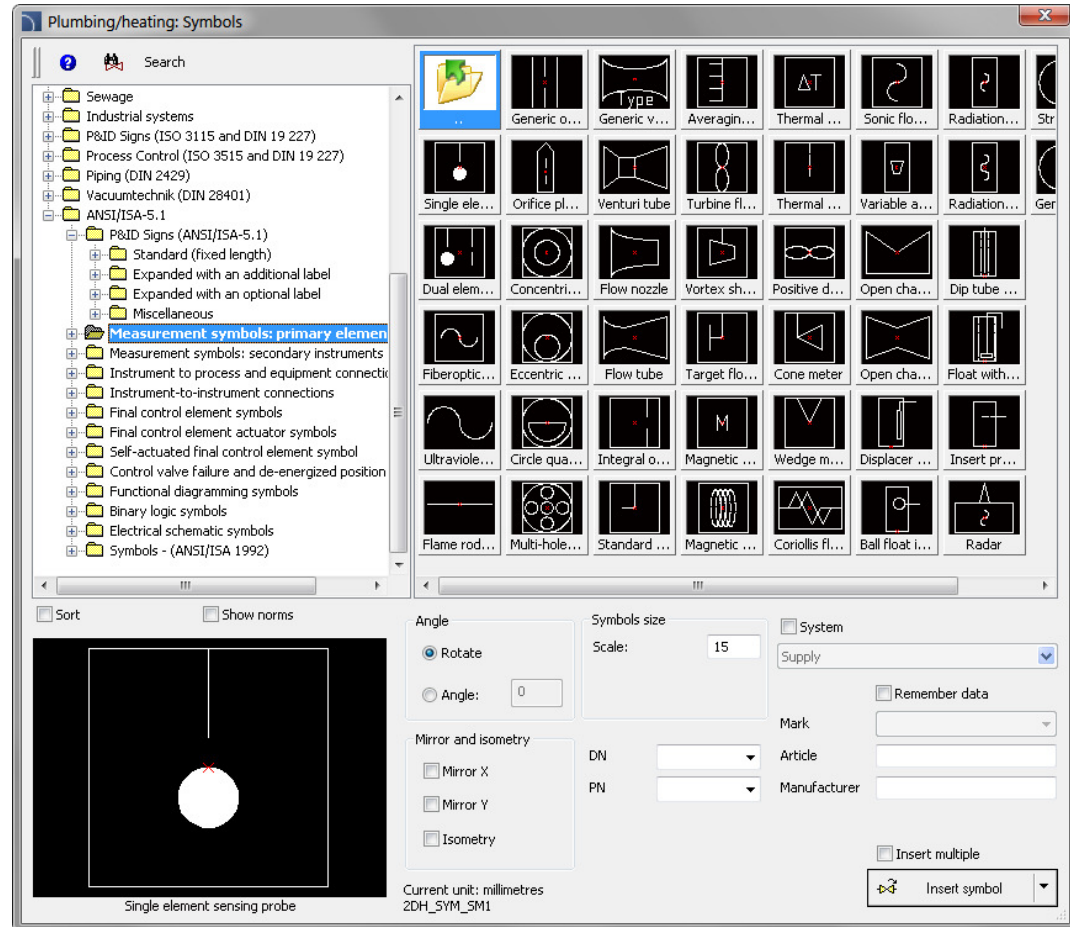
When drawing next lines or 2D shapes CADprofi software proposes the main diameter, the same that had the last line (pipe or ventilation) that was recently drawn. When you insert a reduction the software automatically changes the default line diameter to a diameter of line that was reduced. In this way next lines are drawn with a reduced diameter.

Sometimes this mechanism interferes, therefore in CADprofi 7.11 we have introduced the “Fixed dimensions” option which blocks changes of shapes default dimensions.



## ✓ New symbols in HVAC & Piping module

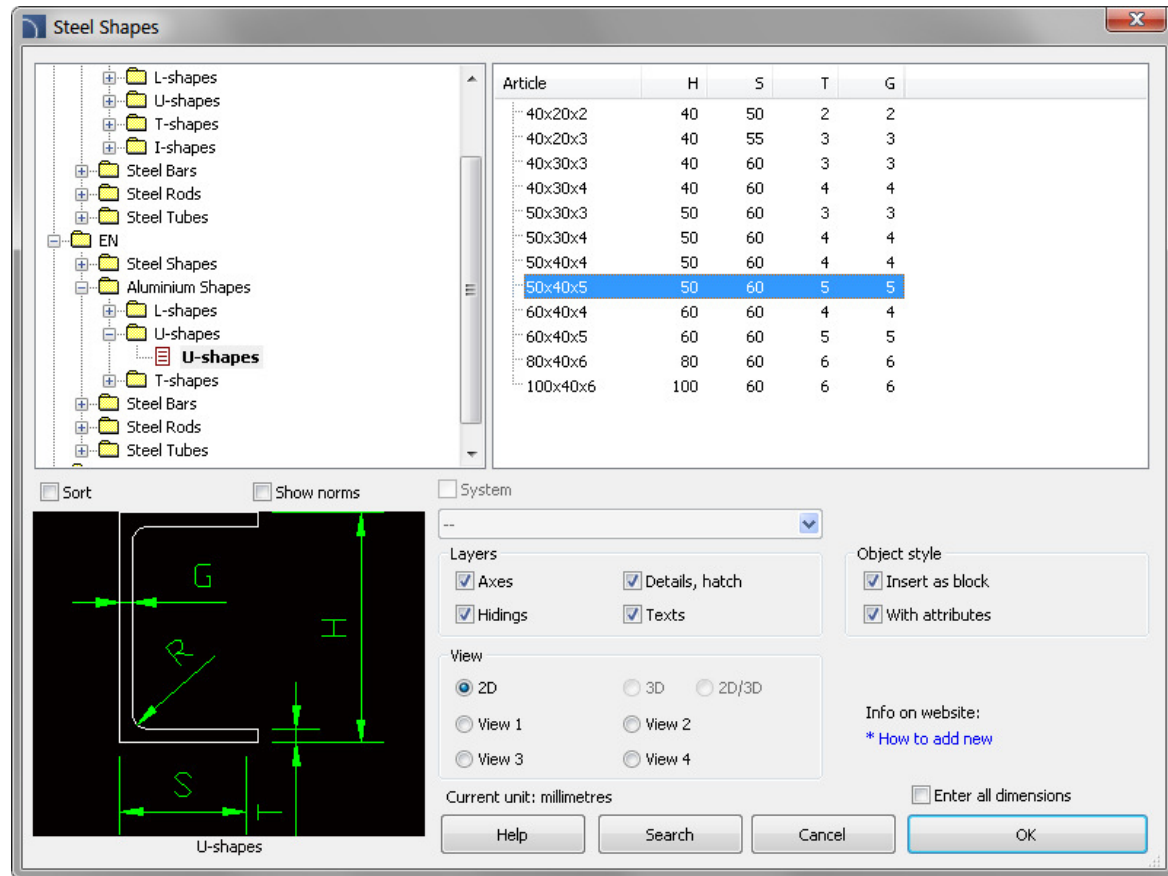
CADprofi HVAC & Piping software is being successfully used in designing installations in general construction as well as in industry. In order to extend this we have included many symbols from ANSI / ISA standards which allow better, broader cooperation and implementation of projects according to additional standards.





## ✓ Shapes and steel and aluminum profiles

In CADprofi 7.11 we have updated existing standards and we have introduced additional standards: PN, EN, DIN and ANSI including steel shape shapes, steel and aluminum profiles.



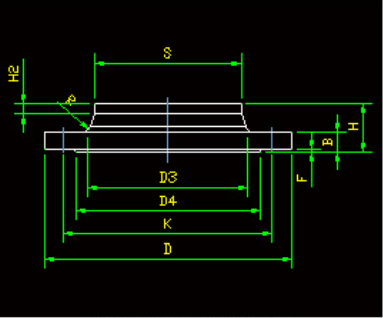
## ✓ PN i EN flanges

We have added to our base new PN and EN standards including many types of flanges.

Exchangers, Vessels, Boilers

| Article     | D          | S           | H         | Bolts      |
|-------------|------------|-------------|-----------|------------|
| PN 2.5      |            |             |           |            |
| PN 6        |            |             |           |            |
| PN 10       |            |             |           |            |
| PN 16       |            |             |           |            |
| DN10        | 90         | 17.2        | 35        | M12        |
| DN15        | 95         | 21.3        | 38        | M12        |
| DN20        | 105        | 26.9        | 40        | M12        |
| DN25        | 115        | 33.7        | 40        | M12        |
| DN32        | 140        | 42.4        | 42        | M16        |
| DN40        | 150        | 48.3        | 45        | M16        |
| DN50        | 165        | 60.3        | 45        | M16        |
| DN65        | 185        | 76.1        | 45        | M16        |
| <b>DN80</b> | <b>200</b> | <b>88.9</b> | <b>50</b> | <b>M16</b> |
| DN100       | 220        | 114.3       | 52        | M16        |
| DN125       | 250        | 139.7       | 55        | M16        |

Sort  Show norms  System



Welding neck flanges EN 1092-1

Layers:  Axes  Details, hatch  Hidings  Texts

Object style:  Insert as block  With attributes

View:  2D  3D  2D/3D  
 --  Section  
 Front  Back

Current unit: millimetres  Enter all dimensions

Help Search Cancel OK

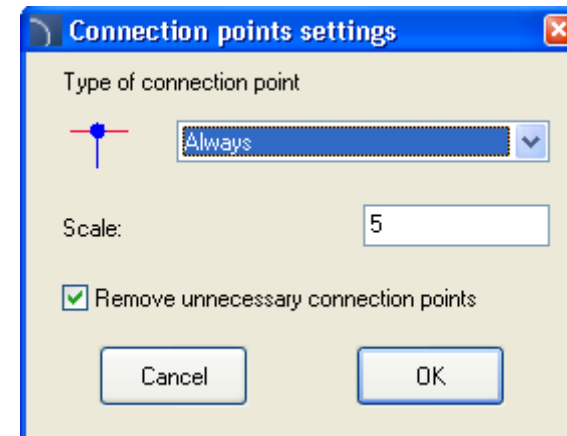


# CADprofi 7

## ✓ Optimization of several commands

We have optimized the performance of certain AutoCAD, ZWCAD, GstarCAD and Bricscad commands:

- automatic insertion of connection points during lines drawings,
- creator to add blocks and objects to user's library,
- inserting parametric blocks from manufacturers library.





# CADprofi 7

## ✓ Manufacturers library update



Other manufacturer libraries were fitted to allow to insert the „insert alternative view” command in order to automatically obtain various views for objects inserted in the drawings.