

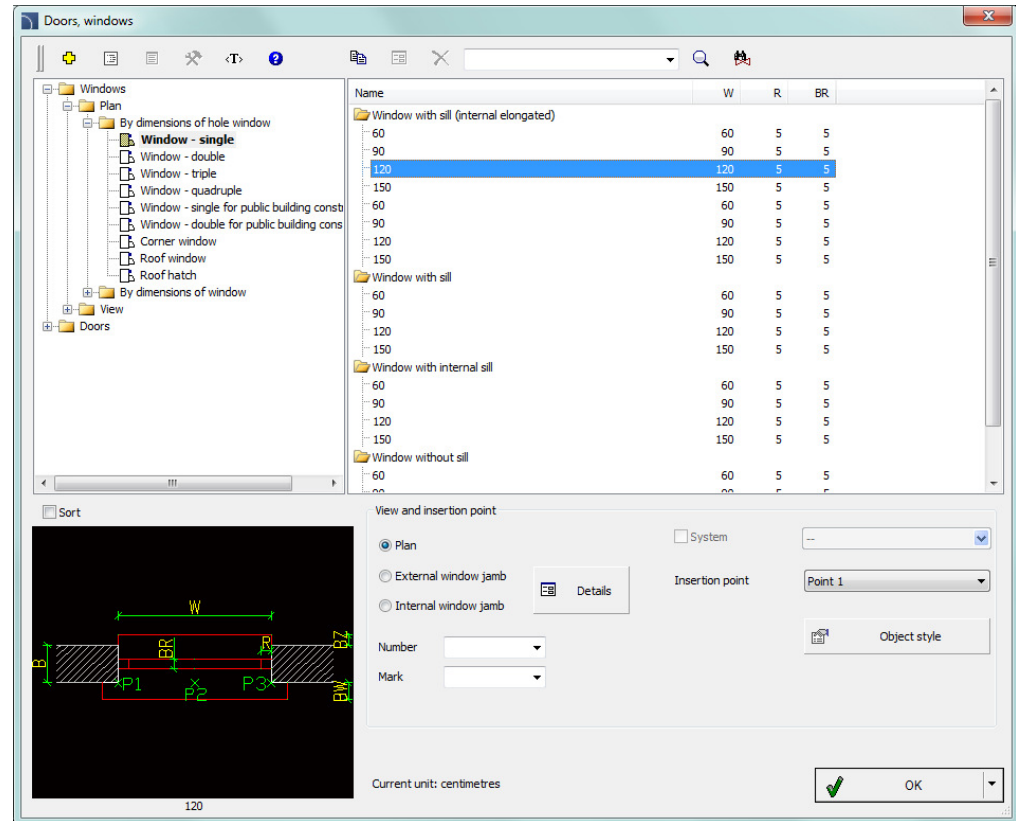
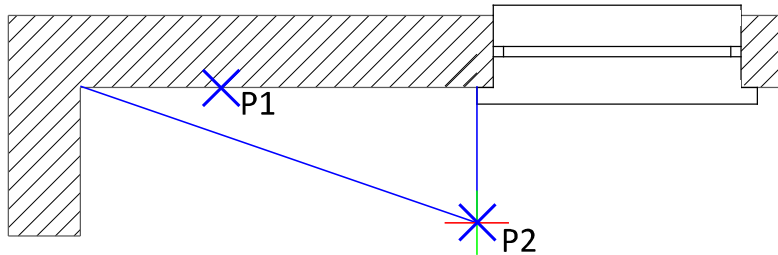


**CADprofi 10.19**

## ✓ CADprofi Architectural – improved procedure of inserting windows and doors on plans

During insertion of windows and doors CADprofi program automatically detects the wall thickness and allows to easily specify the distance to insert objects from wall corners or other reference points. For some objects user can also specify the side placement in accordance to the wall (e.g. outdoor or indoor).

The "Quick edit" command allows to quickly change the side placement of objects that are already inserted in the drawing.

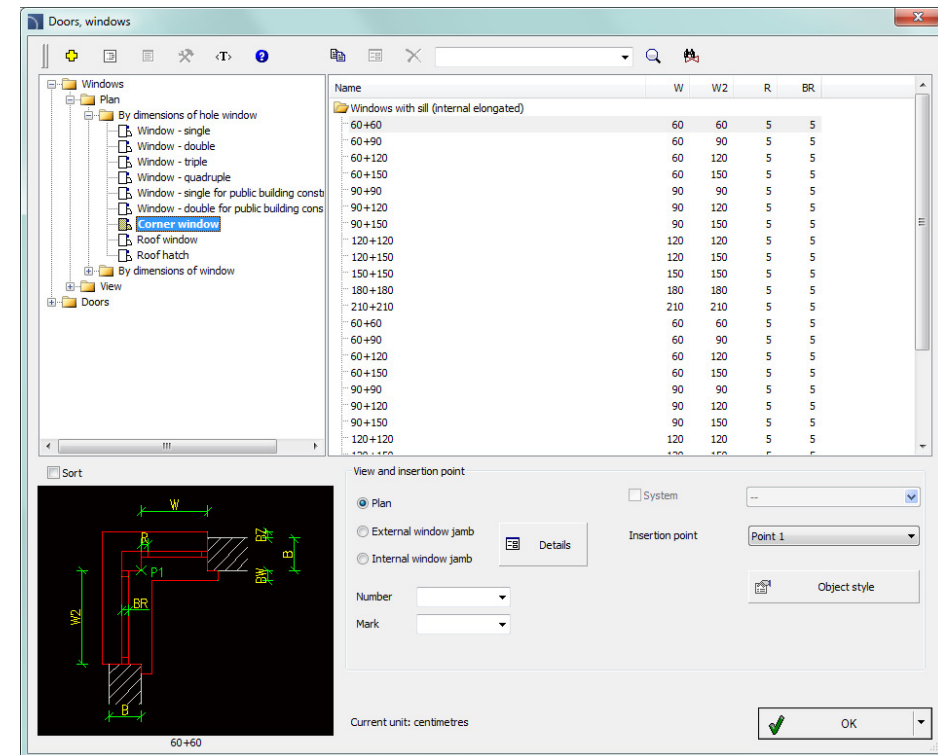


## ✓ CADprofi Architectural – extension of the woodwork library

Additional types of windows and doors have been added to the library, including:

- Quadruple, corner, roof windows.
- Roof hatches.
- Pocket doors.
- Sliding doors.
- Double folding doors.
- Swing doors.
- Folding doors.
- Interior doors with a doorstep.
- Doors with fixed side elements.
- Balcony doors.
- Revolving doors.
- Garage doors.

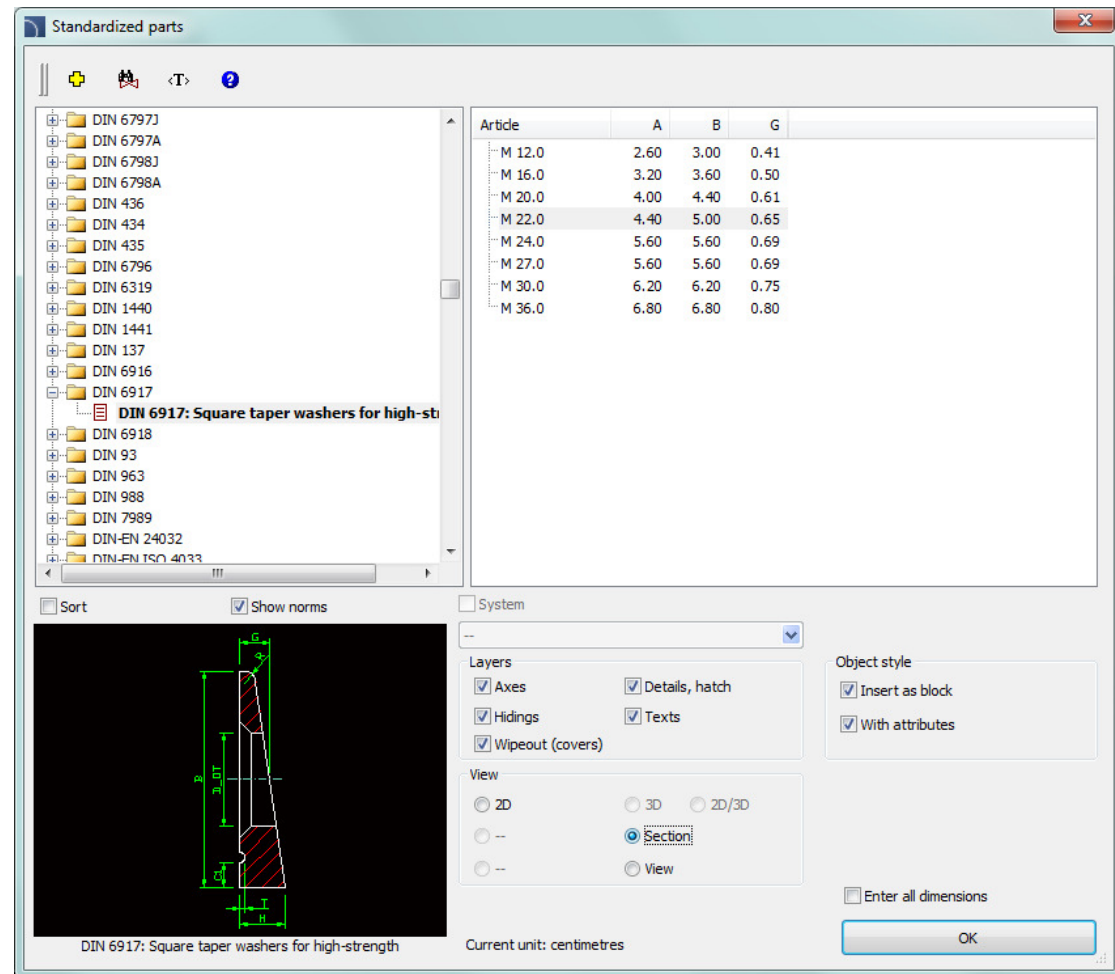
For doors and windows views used on sections were also added.



## ✓ CADprofi Mechanical – additional standards

Additional standards have been added to the program, including:

- DIN 1441 – Washers for clevis pins.
- DIN 6914 – High-strength hexagon head bolts with large widths.
- DIN 6915 – Steel hexagon nuts with large width.
- DIN 6917 – Square taper washers for high strength.
- DIN 6918 – Square taper washers for high-strength.
- DIN 66 – Countersink for countersunk head screw.
- EN ISO 4033 – Hexagon nuts.
- EN ISO 4036 – Hexagon thin nuts unchamfered.
- EN ISO 8674 – Hexagon high nuts.
- ISO 4018 – Hexagon head screws.
- The DIN 1025-3 has been updated – Hot rolled I-beams - HEA-serie.

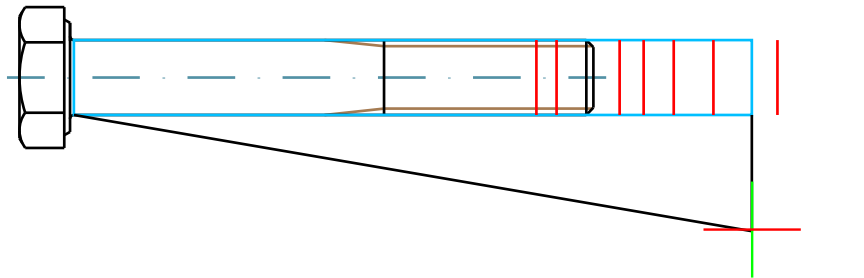
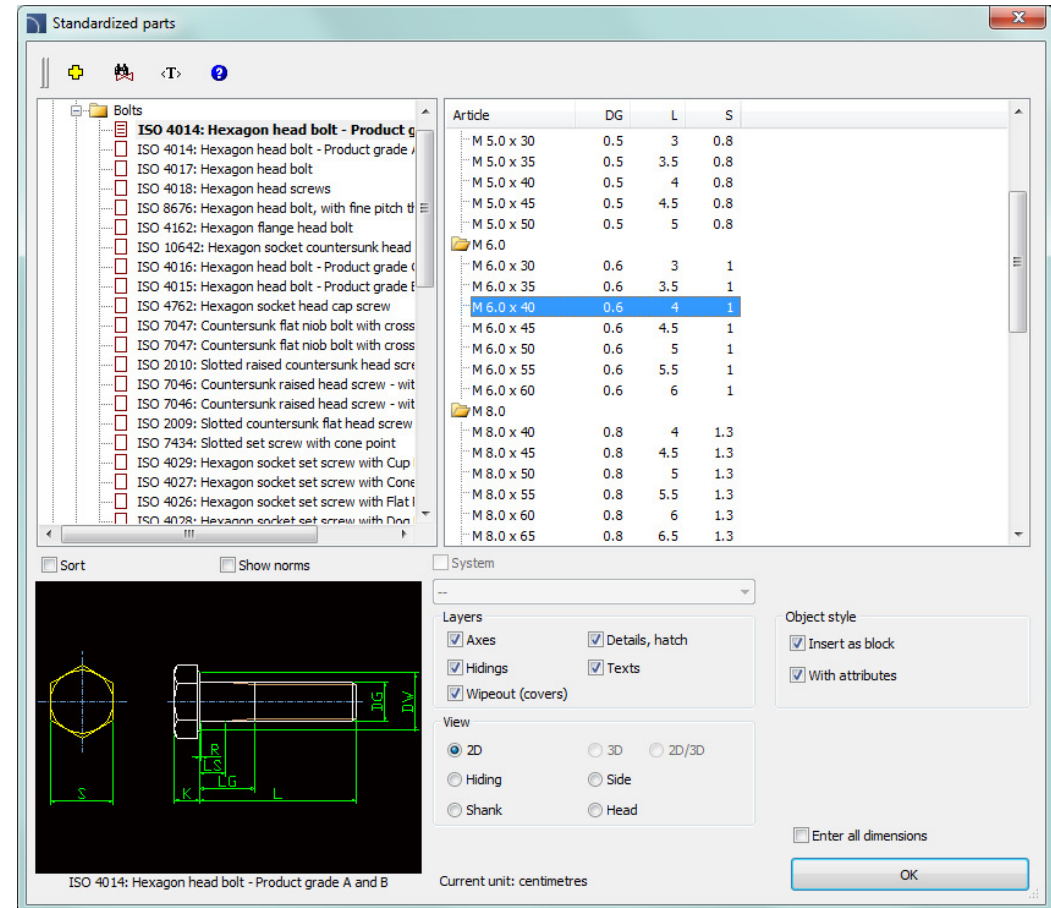




## ✓ CADprofi Mechanical – new procedure of inserting screws, pins, bolts, rivets etc.

During insertion of elements to the drawing it is possible to dynamically select the length from the type of series. Thanks to this feature it is much easier to choose the right element that meets the project requirements.

Thanks to the "Quick edit" command user can easily change the length of elements that are already inserted in the drawing.

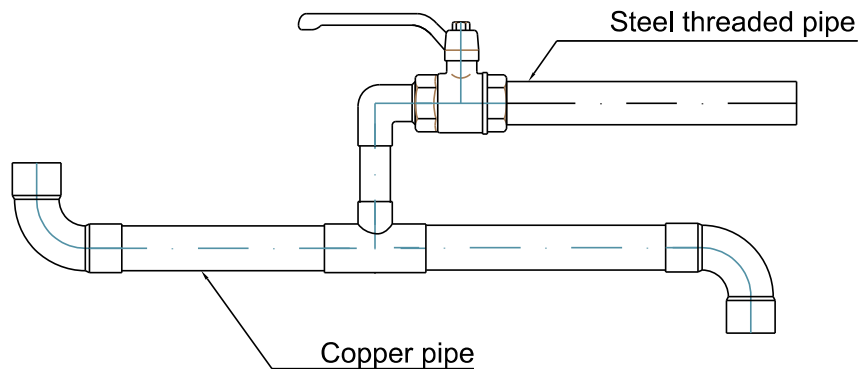
Article	DG	L	S
M 5,0 x 30	0.5	3	0.8
M 5,0 x 35	0.5	3.5	0.8
M 5,0 x 40	0.5	4	0.8
M 5,0 x 45	0.5	4.5	0.8
M 5,0 x 50	0.5	5	0.8
M 6,0			
M 6,0 x 30	0.6	3	1
M 6,0 x 35	0.6	3.5	1
M 6,0 x 40	0.6	4	1
M 6,0 x 45	0.6	4.5	1
M 6,0 x 50	0.6	5	1
M 6,0 x 55	0.6	5.5	1
M 6,0 x 60	0.6	6	1
M 8,0			
M 8,0 x 40	0.8	4	1.3
M 8,0 x 45	0.8	4.5	1.3
M 8,0 x 50	0.8	5	1.3
M 8,0 x 55	0.8	5.5	1.3
M 8,0 x 60	0.8	6	1.3
M 8,0 x 65	0.8	6.5	1.3

ISO 4014: Hexagon head bolt - Product grade A and B

Current unit: centimetres

## ✓ CADprofi HVAC & Piping – copper (CU) pipes and fittings

Copper (CU) pipes and fittings with a diameter of 6 to 108 mm that are used in heating have been added to the program.



Parametrical armature

Name	L	DZ
12 x 1/2	4.4	1.4
15 x 3/8	4.2	1.7
15 x 1/2	4.6	1.7
18 x 3/8	4.6	2.0
18 x 1/2	5.0	2.0
18 x 3/4	6.0	2.0
22 x 3/8	5.2	2.4
22 x 1/2	5.4	2.4
22 x 3/4	6.4	2.4
28 x 1/2	6.6	3.1
28 x 3/4	6.8	3.1
28 x 1	7.8	3.1
35 x 1/2	7.2	3.8
35 x 3/4	7.8	3.8
35 x 1 1/4	9.8	3.8
42 x 1 1/2	10.6	4.5

Sort

View and insertion point

Insertion point: Point 1

View 1 (selected)

Start element: [ ]

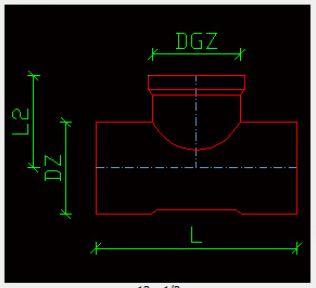
End element: [ ]

Insert reducer: [x]

Current unit: centimetres

Object style

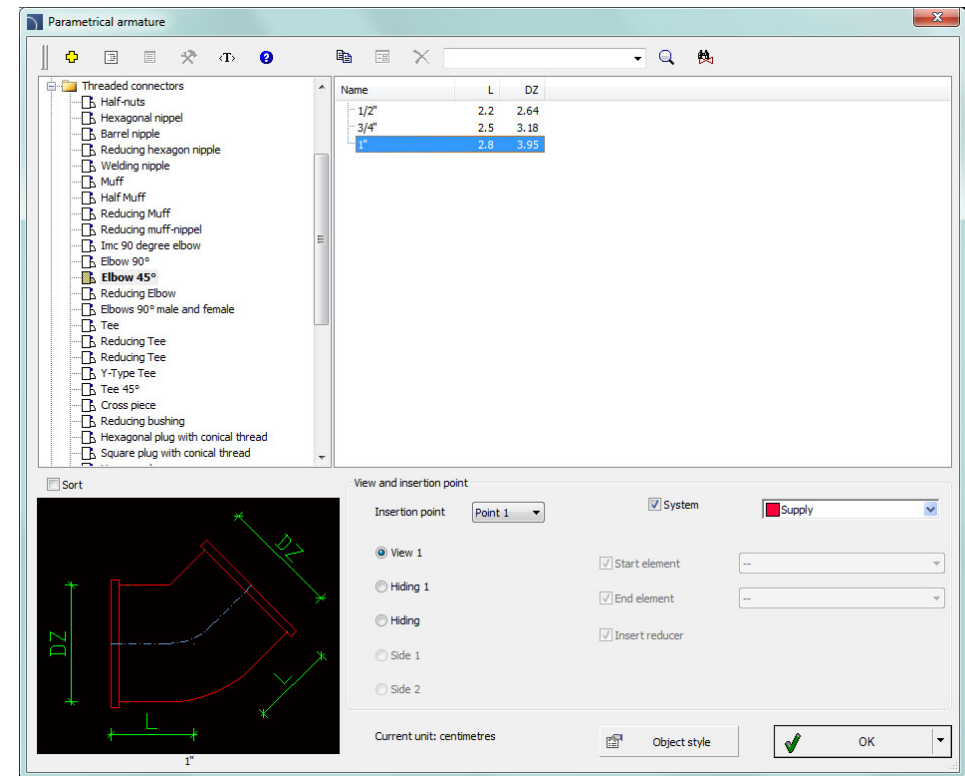
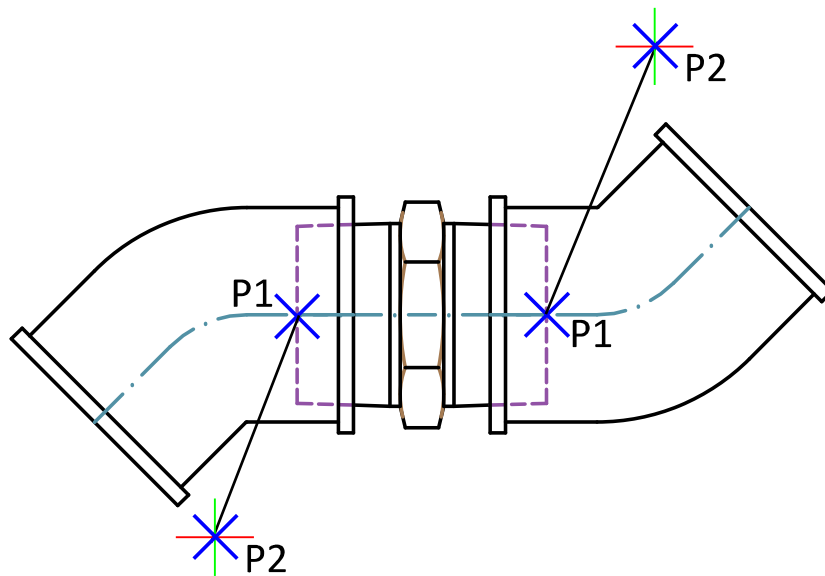
OK



Technical drawing of a tee fitting showing dimensions: L (length), DZ (diameter), and DGZ (flange diameter).

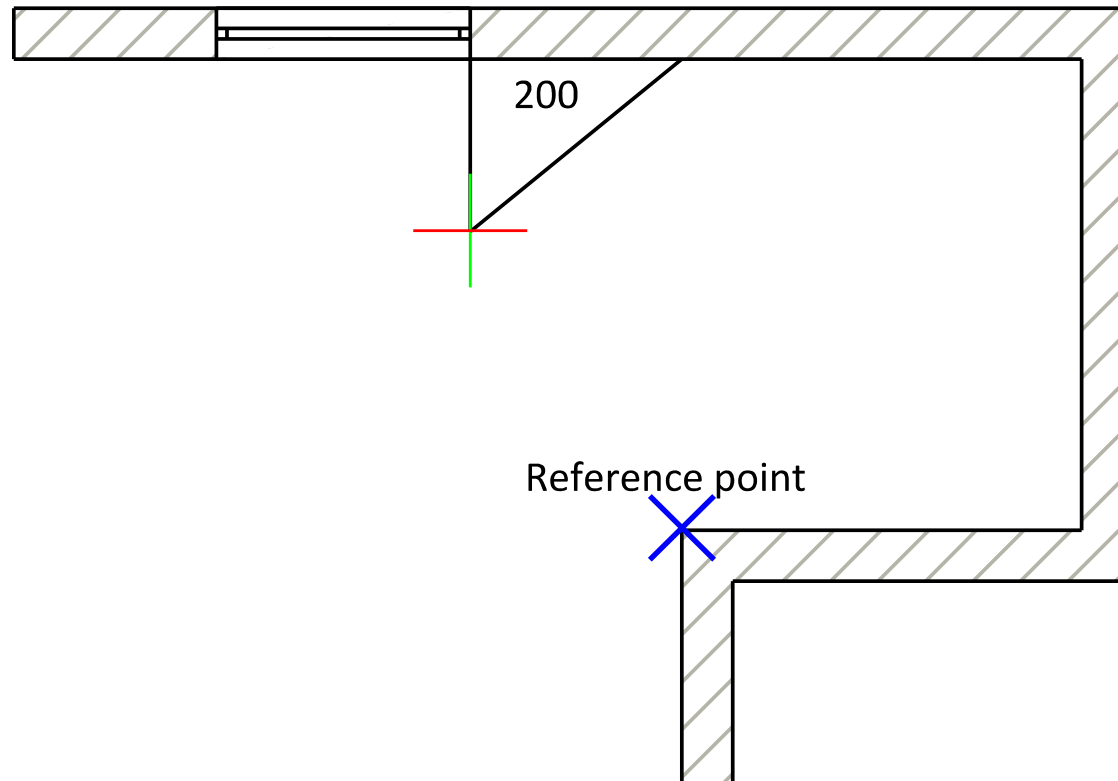
## ✓ Dynamic determination of objects insertion "direction"

For certain elements (such as elbows, tees) it is possible to dynamically determine the direction of insertion. This option makes it much easier to draw installation sequences.



## ✓ Improved 'in extension' option

When inserting multiple objects (e.g. symbols, fittings, windows etc.) user can use the "in extension" option, which makes it easier to determine the position of objects that lie along the selected line. After indicating the line, user can determine the object insertion distance from the beginning of the line or from any reference point. This feature speeds up precision insertion of elements without the need of drawing construction lines or using editing commands.





# CADprofi

## ✓ Adjustment to many base CAD programs

CADprofi 10.15 has been adjusted to work with latest CAD programs, including: GstarCAD 8 64bit and ZWCAD+ 2014 SP2.

CADprofi 10 currently works with many base CAD programs including: AutoCAD (since the 2000 version), BricsCAD, GstarCAD, IntelliCAD, progeCAD, ZWCAD, ARES Commander Edition and others.

The logo for AutoCAD, featuring the word 'AutoCAD' in a bold, red, sans-serif font with a registered trademark symbol.

The logo for ZWCAD+, featuring the word 'ZWCAD' in a blue, sans-serif font with a green plus sign to the right.

The logo for GstarCAD, featuring the word 'GstarCAD' in a blue and yellow, sans-serif font with the tagline 'An Alternative CAD System' below it.

The logo for BricsCAD, featuring a stylized blue 'B' shape above the word 'BRICSCAD' in a bold, black, sans-serif font.

The logo for progeSOFT, featuring a blue globe with a yellow 'I' shape above the word 'progeSOFT' in a blue, sans-serif font.

The logo for IntelliCAD, featuring a purple diamond shape with a yellow 'I' shape above the word 'IntelliCAD' in a purple, sans-serif font.



# CADprofi

✓ **Update of manufacturers' libraries:**





**CADprofi**

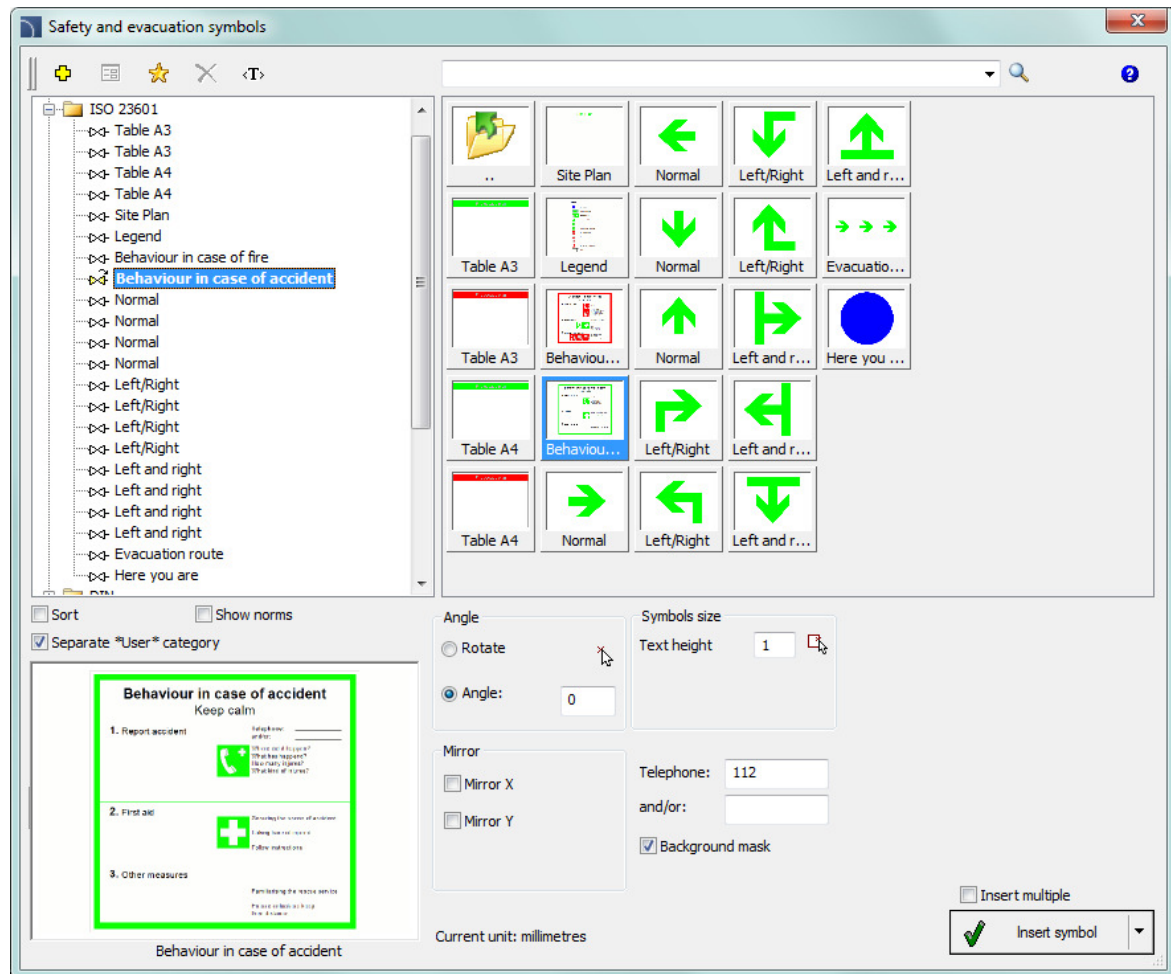


**CADprofi 10.13**

## ✓ CADprofi Architectural – extension of evacuation symbols library

Evacuation library has been extended with the following standards:

- ISO 23601
- ASR A1.3

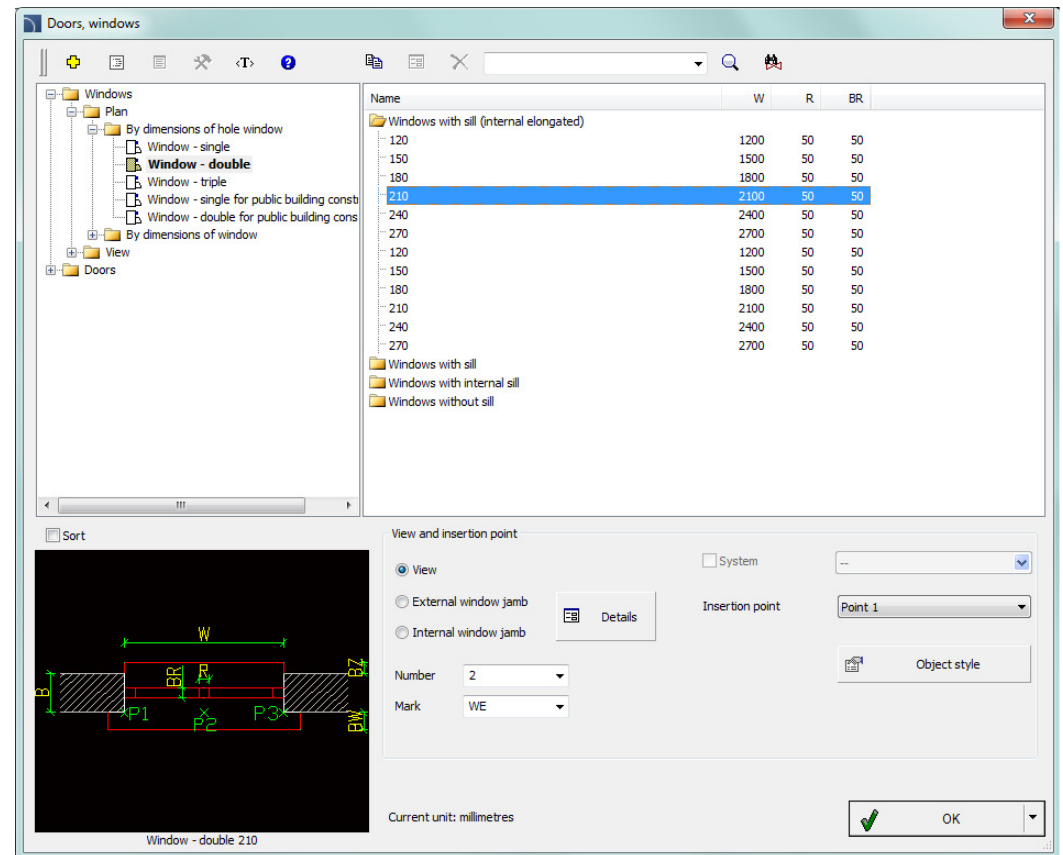
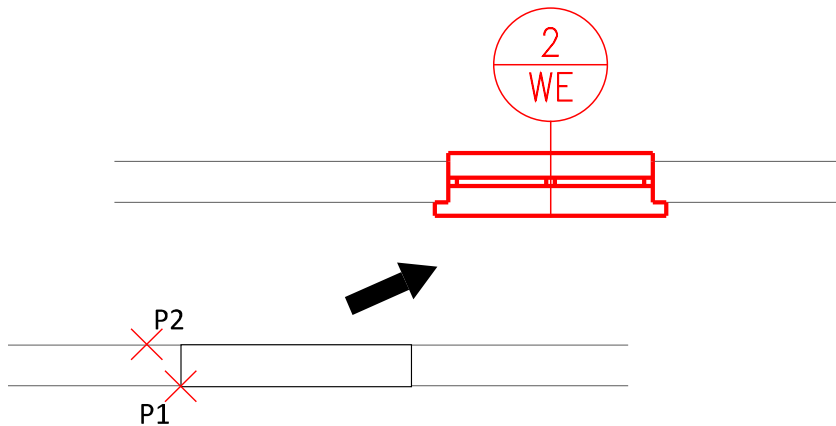




## ✓ CADprofi Architectural – changes in doors and windows libraries

During the insertion of windows and doors on plans, a possibility to automatically fit doors and windows has been introduced.

In the dialog window it is possible to specify the number and marking of the inserted elements. These data is afterwards often used when inserting marks or in specifications.

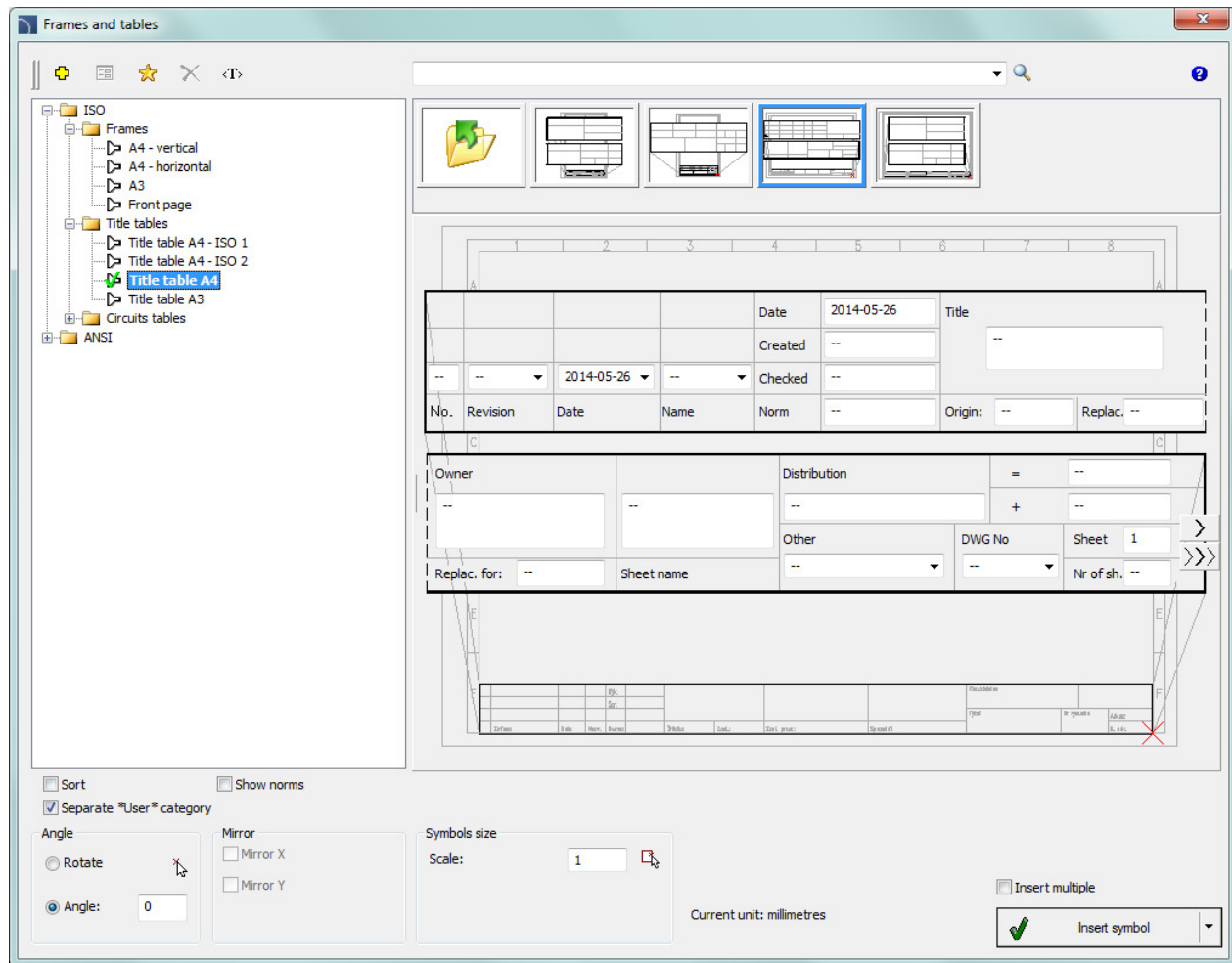




# CADprofi

## ✓ CADprofi Electrical – extended *Frames and tables* command content

On the users request, new electrical circuit tables and a new frame in A4 format have been introduced.

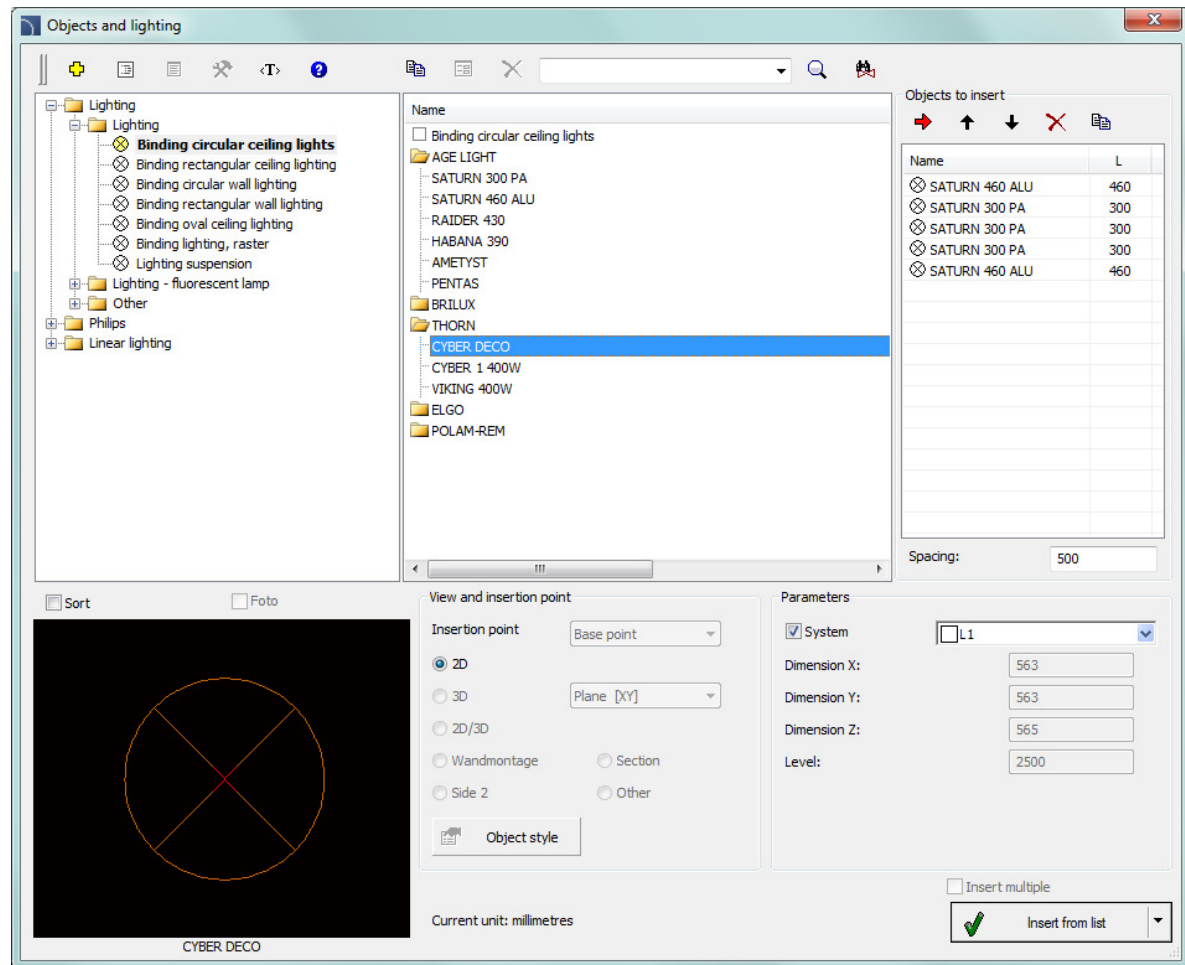




# CADprofi

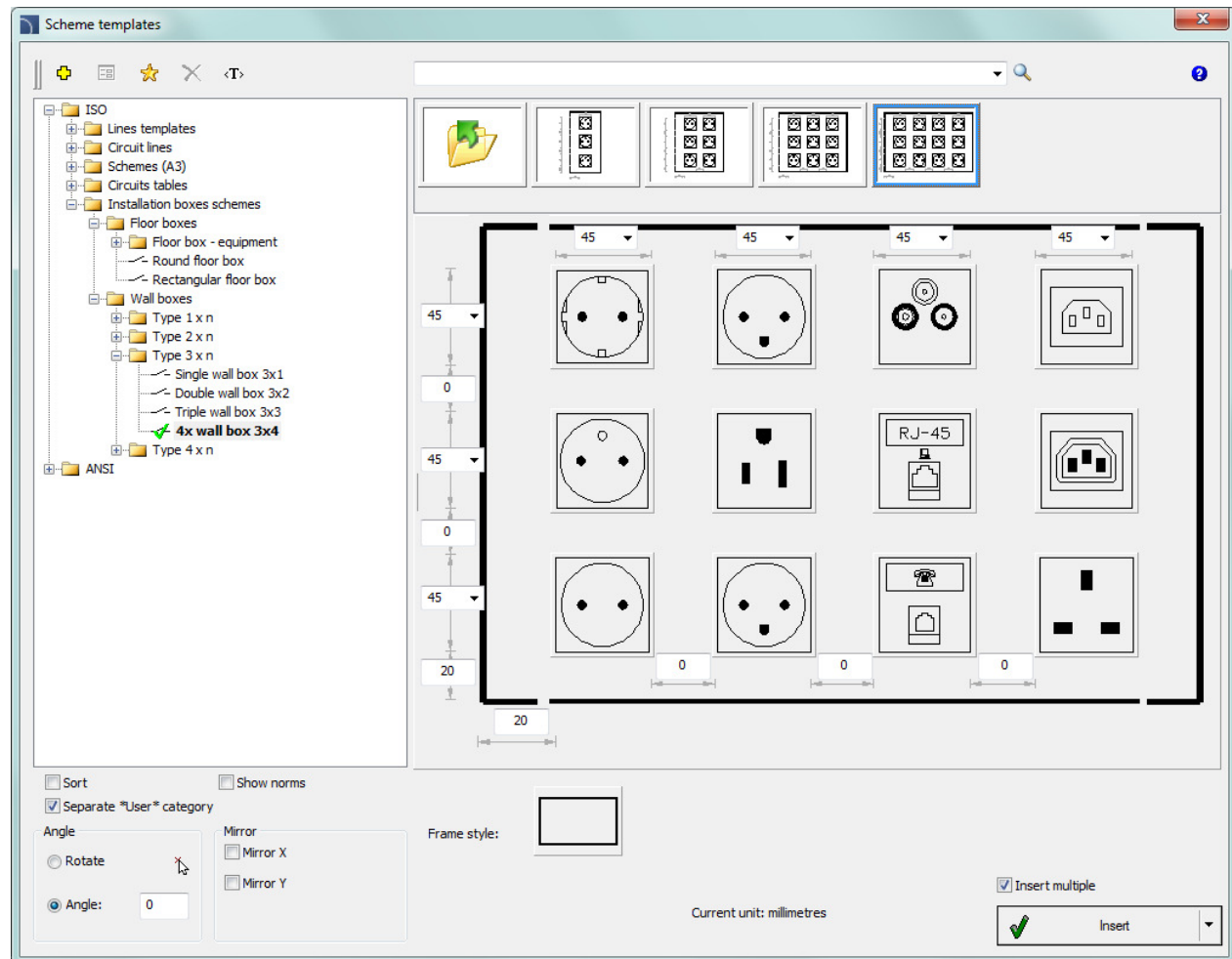
## ✓ CADprofi Electrical – changes in the *Objects and lighting* command

A new list, thanks to which users can insert many lighting fixture with a chosen spacing has been introduced.



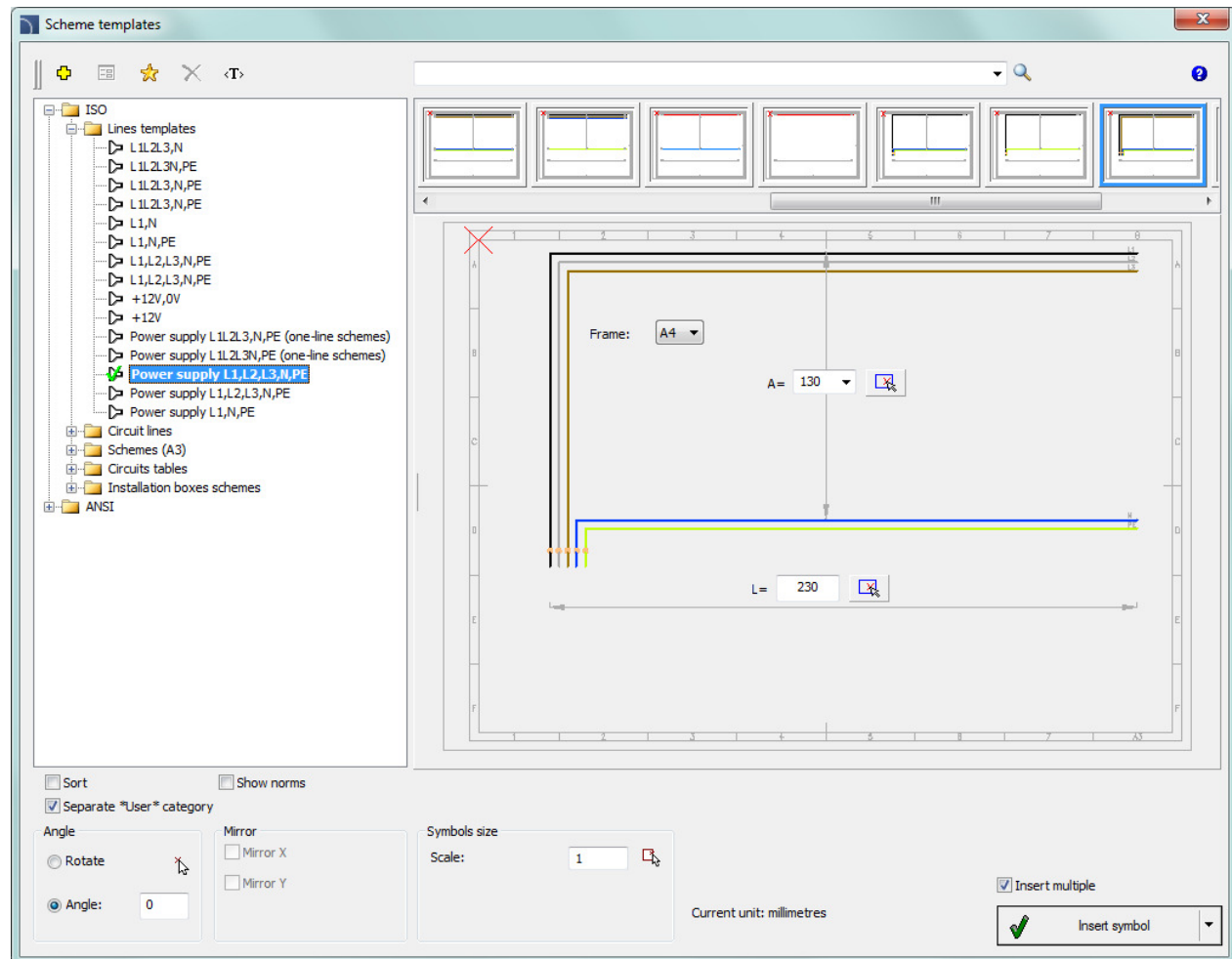
## ✓ CADprofi Electrical – changes in installation boxes schemes

New sockets and switches views, as well as new system of elements configuration have been added to the program.



## ✓ CADprofi Electrical – changes in line templates and circuits

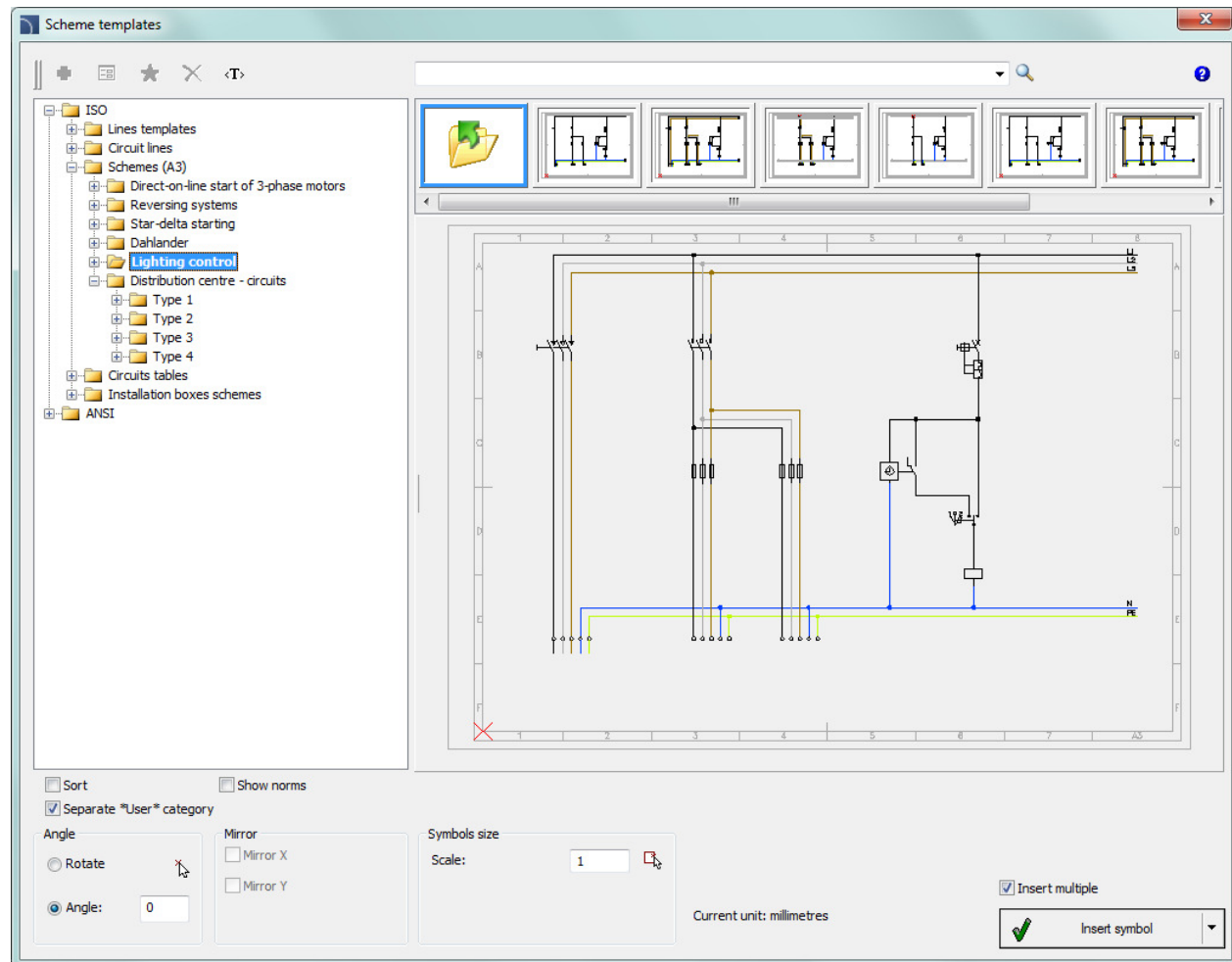
New line templates and circuits for A3 and A4 formats with the possibility to determine their dimensions have been added to the program.



## ✓ CADprofi Electrical – new schemes

New schemes have been added to the *Scheme templates* command:

- lighting control schemes with a dimmer,
- lighting control schemes with a digital time switch.



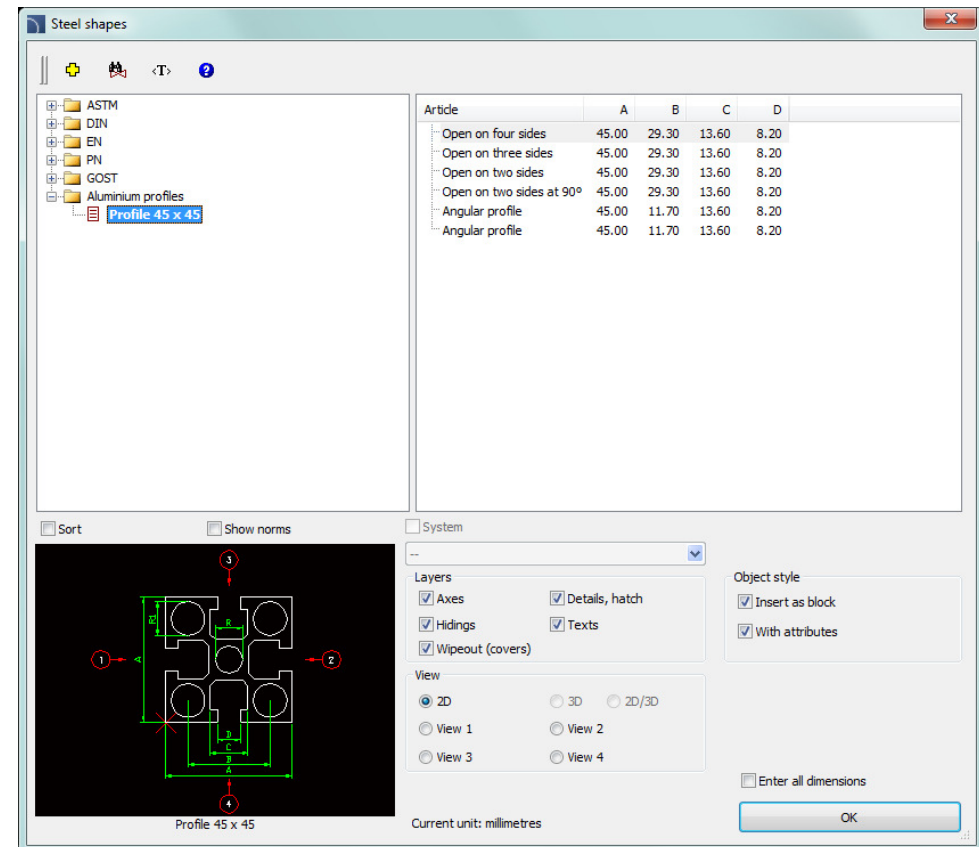


# CADprofi

## ✓ CADprofi Mechanical – modular aluminum profiles

Elements of modular aluminum profiles have been added to the program. They can be used to prepare different constructions, including:

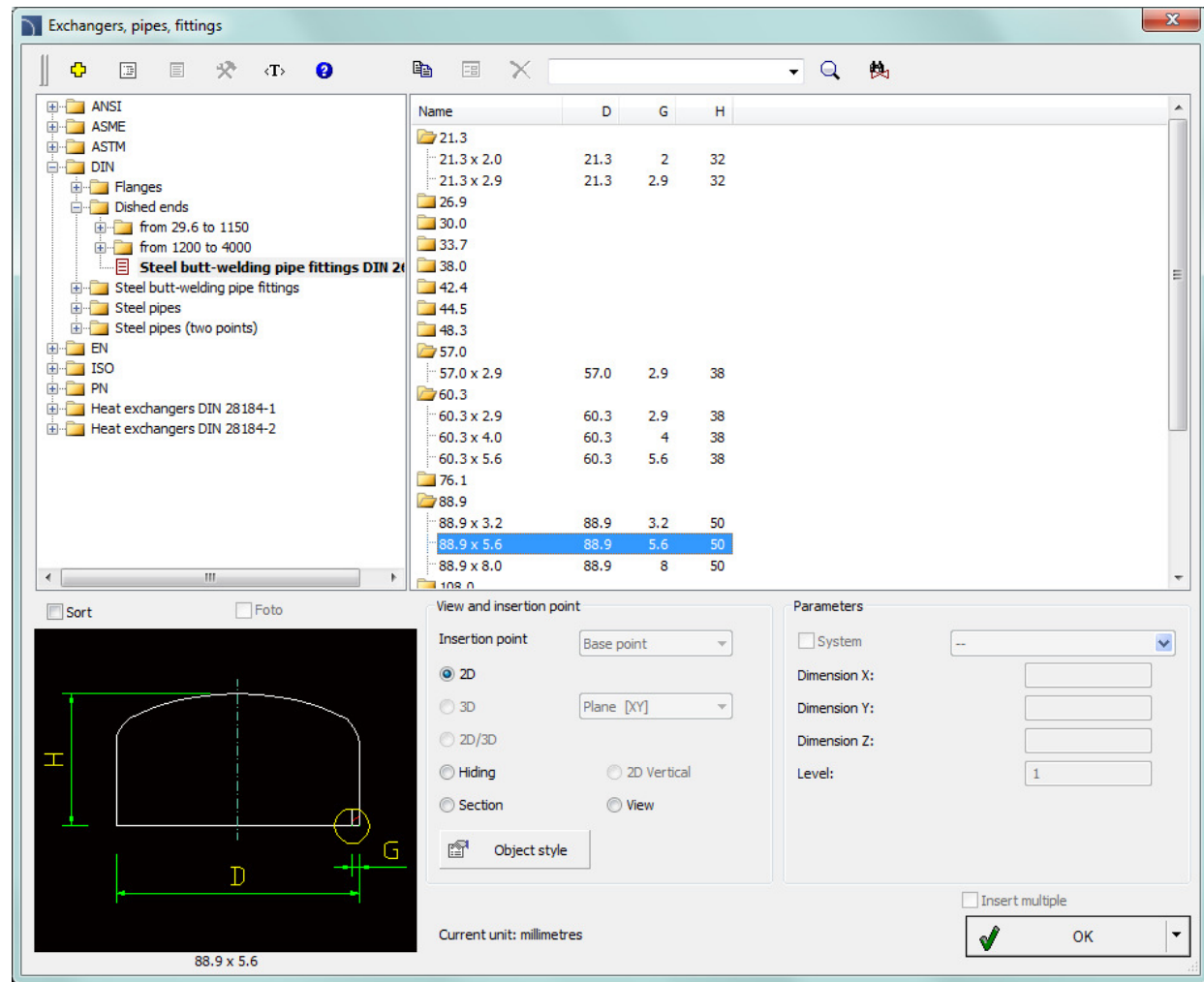
- workstations (furniture),
- single and multi-axis linear guides,
- machinery and equipment bodies,
- transport systems.



## ✓ CADprofi Mechanical – additional standards

Extension of standards regarding the apparatus construction:

- DIN 2440 – threaded steel pipes,
- DIN 2462 – stainless steel pipes,
- DIN 2618 – branch saddles,
- DIN 2617 – dished ends.



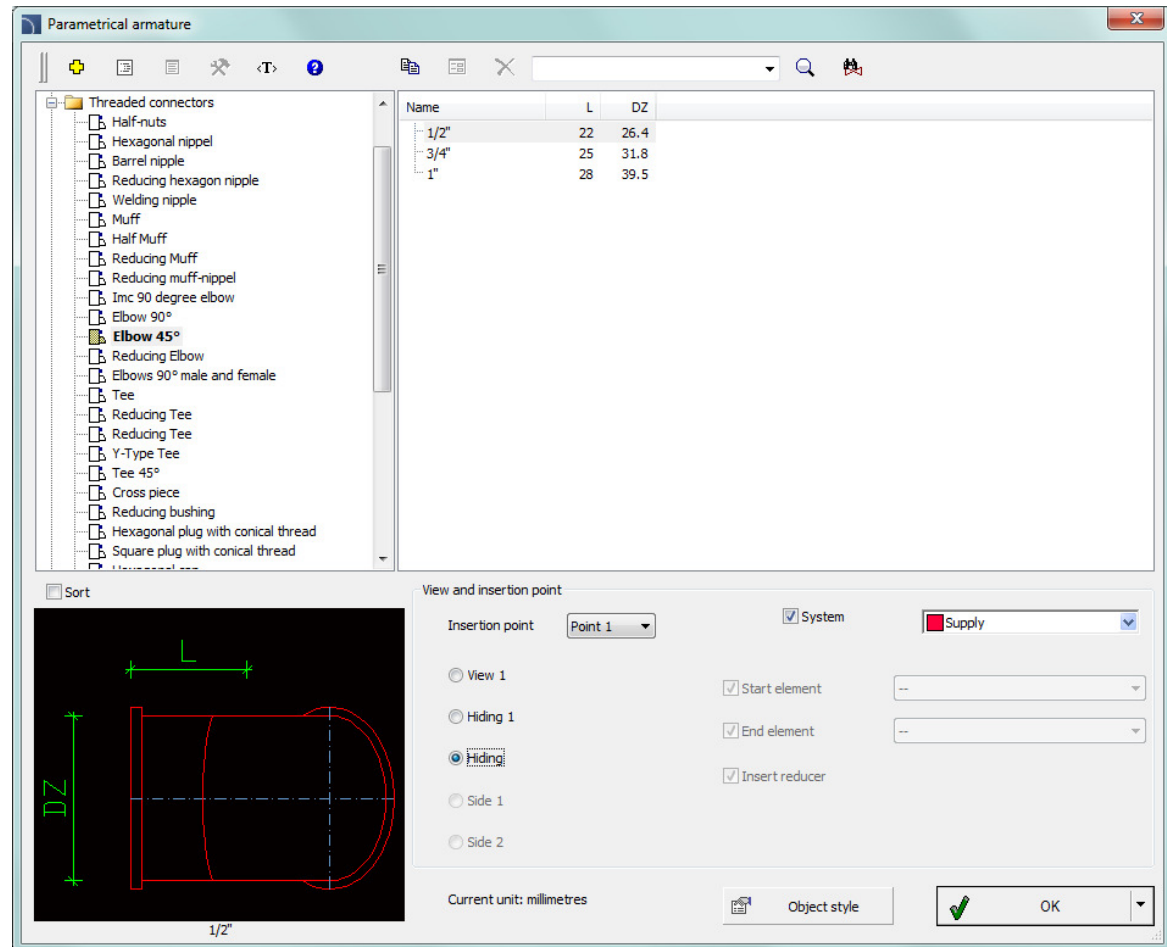




# CADprofi

## ✓ CADprofi HVAC & Piping – additional views for threaded fittings

On the users request, additional views for threaded fittings have been added to the program.



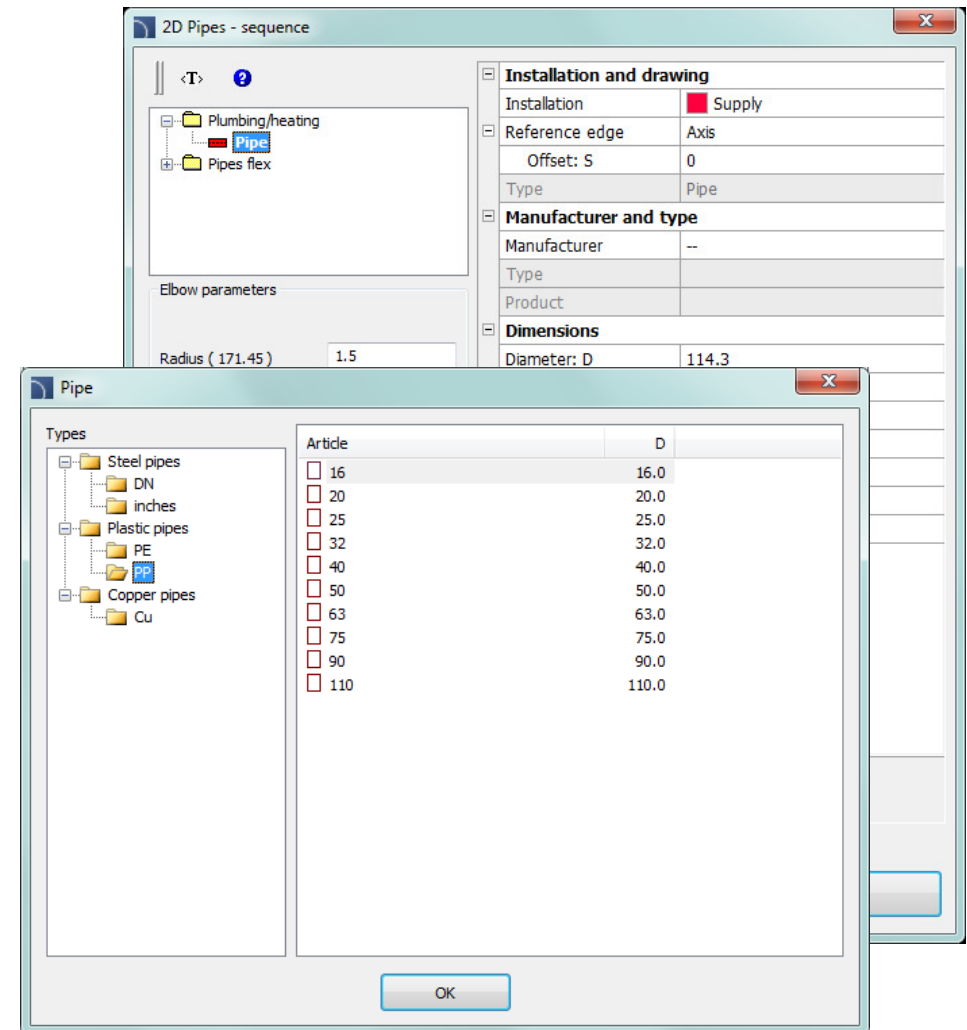


# CADprofi

## ✓ CADprofi HVAC & Piping – a system of pipes, fittings and polypropylene armature

A system of pipes, fittings and valves made of polypropylene (PP) with a diameter of 16 to 110 mm has been added to the program.

In addition, a possibility to connect various system diameters of pipes and fittings with threaded pipes by using welded-threaded fittings have been introduced.





# CADprofi

## ✓ CADprofi HVAC & Piping – Weishaupt company burners

Weishaupt burners (oil, gas and dual fuel), as well as the gas pressure regulator have been added to the program.

The screenshot shows the 'Parametrical objects' window in CADprofi. On the left is a tree view of the object library, with 'Burners' expanded to show 'Oil burners', 'Gas burners', and 'Dual fuel burners'. The 'medium power' option under 'Gas burners' is selected. On the right is a table of burner specifications:

Name	L	L3	B1	B2	H1	Manufacturer
WM-G10/1-A ZM	813	178	307	279	445	weishaupt
WM-G10/2-A ZM	813	178	307	279	445	weishaupt
WM-G10/3-A ZM	833	224	307	279	445	weishaupt
WM-G10/4-A ZM	833	224	307	279	445	weishaupt
WM-G10/1-A ZM-LN	793	144	307	279	445	weishaupt
WM-G10/2-A ZM-LN	813	143	307	279	445	weishaupt
WM-G10/3-A ZM-LN	833	197	307	279	445	weishaupt

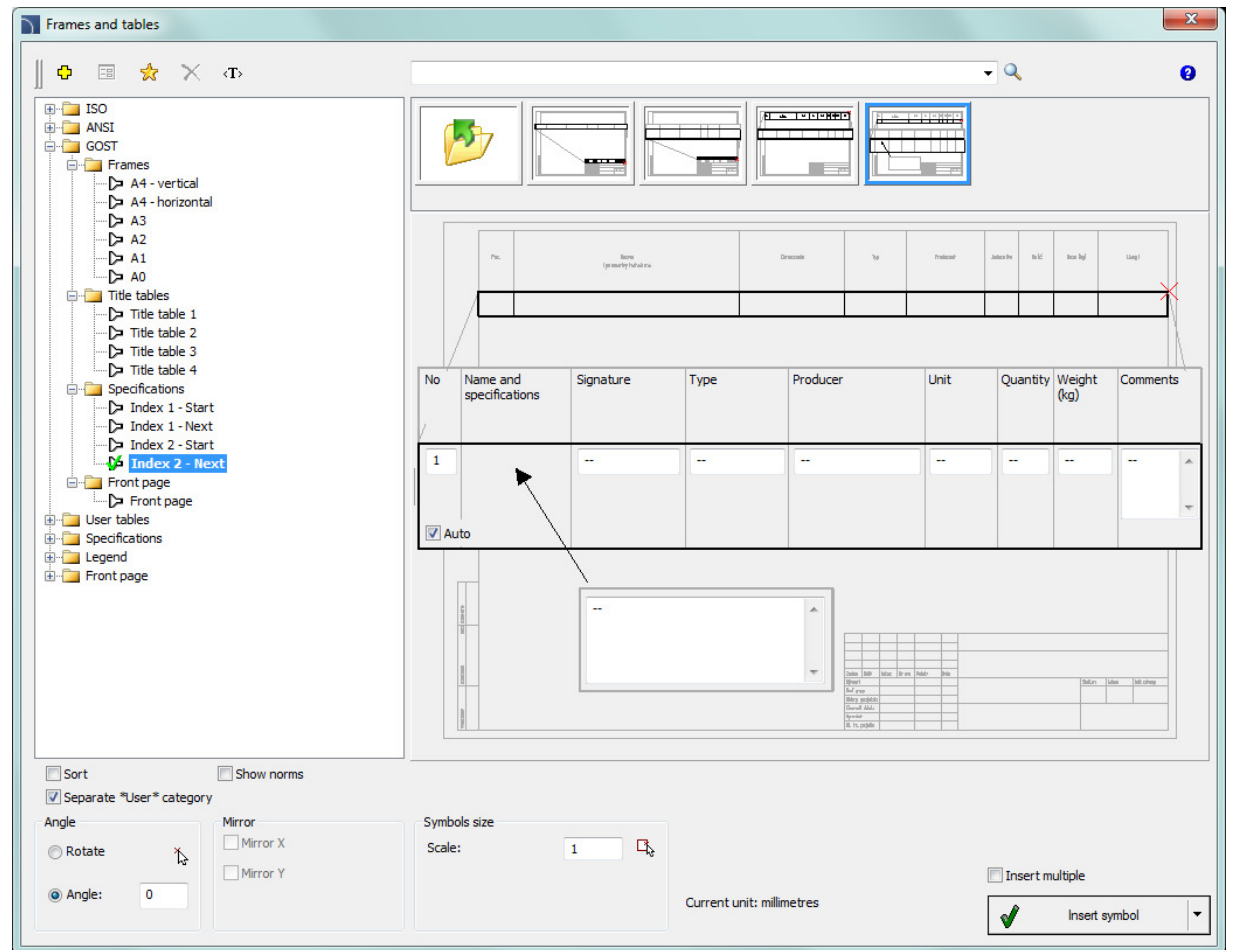
At the bottom left is a 2D technical drawing of a burner with dimensions labeled: H4, D2, D1, L3, L4, L, L5, L6, H1, H2, H3. At the bottom right are settings for 'View and insertion point' (2D, Hiding, Side 1, Side 2), 'System' (checked), 'Supply' (selected), 'Start element', 'End element', and 'Insert reducer' (checked). The current unit is 'millimetres'. Buttons for 'Object style', 'OK', and a dropdown arrow are at the bottom right.

## ✓ Extended *Frames and tables* command content

Additional elements have been added in the *Frames and tables* command, including:

- frames,
- tables,
- specifications (tables used for quick creation of different lists),
- front pages.

In addition, the *Frames and tables* command introduced the possibility to enter multiline texts.

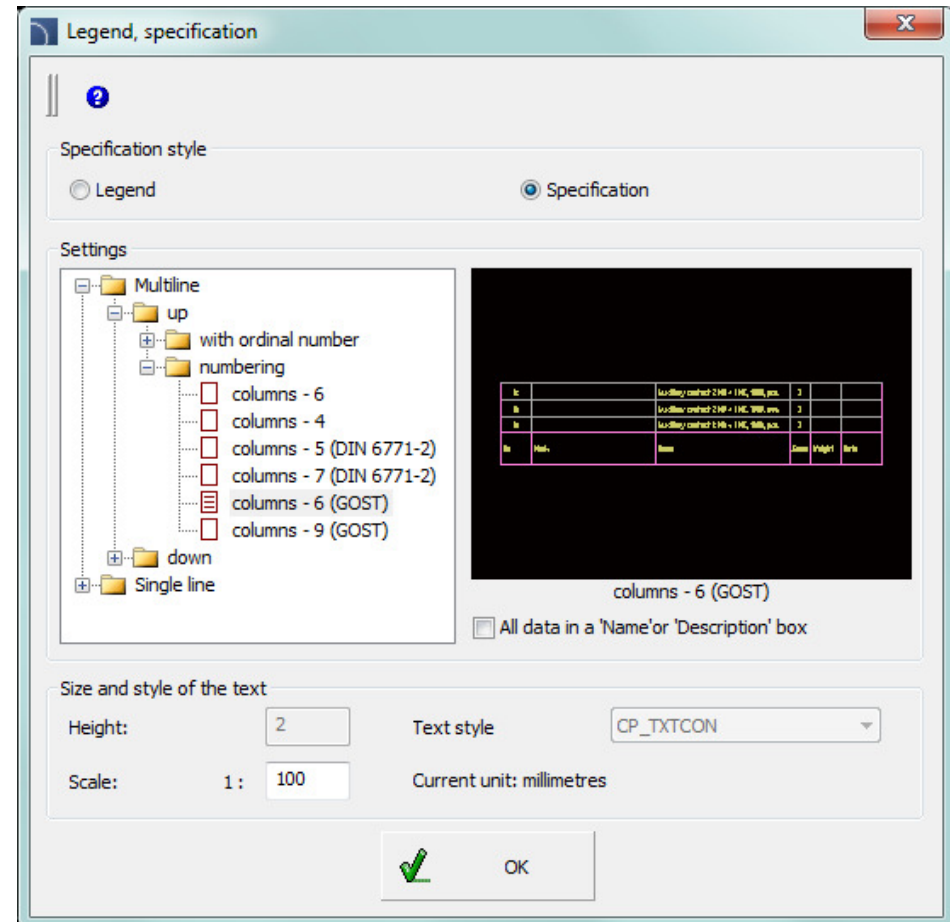




## ✓ Extended *Bill of materials* command content

Additional specifications which automate the creation of specification tables have been added to the *Bill of materials* command.

Specifications prepared according to the GOST standards have been also added.

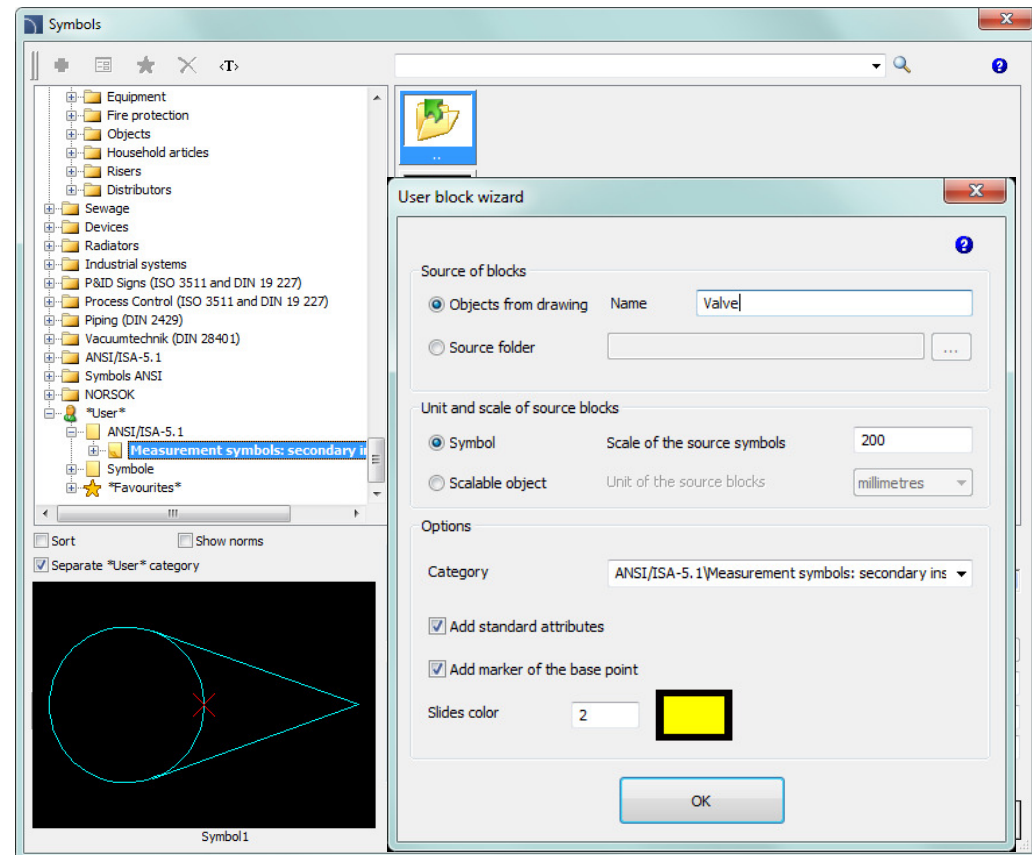


## ✓ User symbols - adding symbols to the libraries

Program allows user to define his own symbols and add them to standard CADprofi libraries. So far, the symbols creator allowed to add symbols to a separate library. Currently symbols are added directly to each individual program commands, and their operation is similar to the operation of all program symbols.

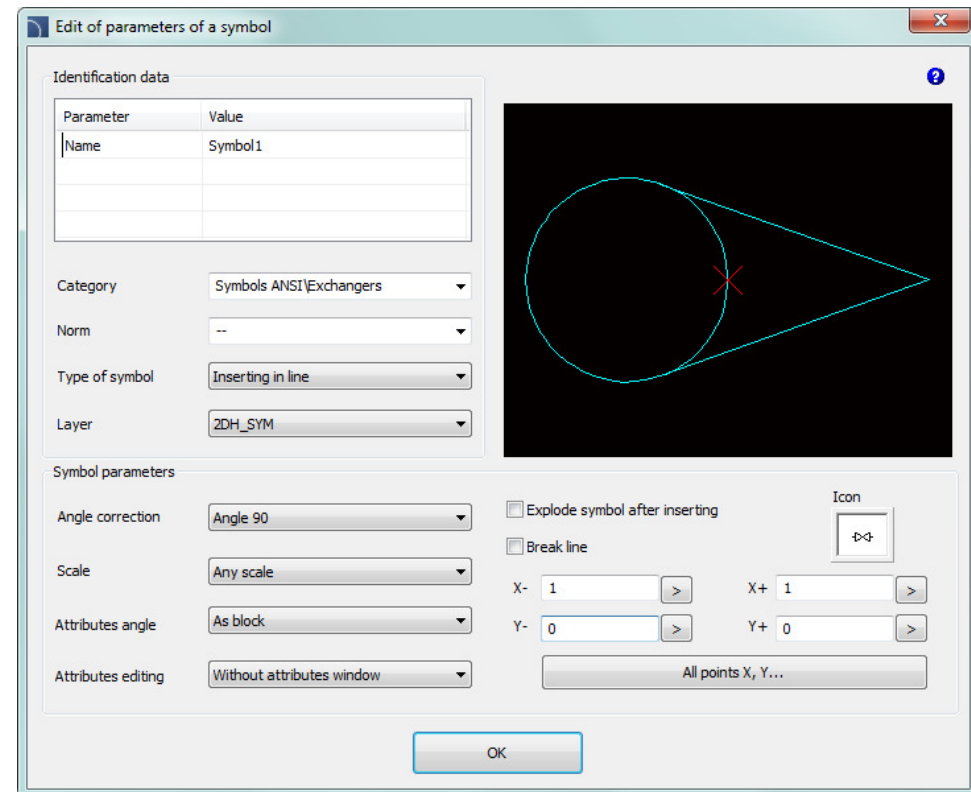
To add user own symbols, a special creator is being used, which allows user to create and expand the database of their blocks in a simple way.

Additionally, there is a possibility to create "scalable" symbols i.e. those for which user can independently determine the X, Y and Z dimensions.



## ✓ User symbols – edition

Symbols that are defined by the user can be edited in a simple way. In the edit window, user can adjust many symbols parameters, including insertion method, break line points (if the symbols is inserted in the line) and others.

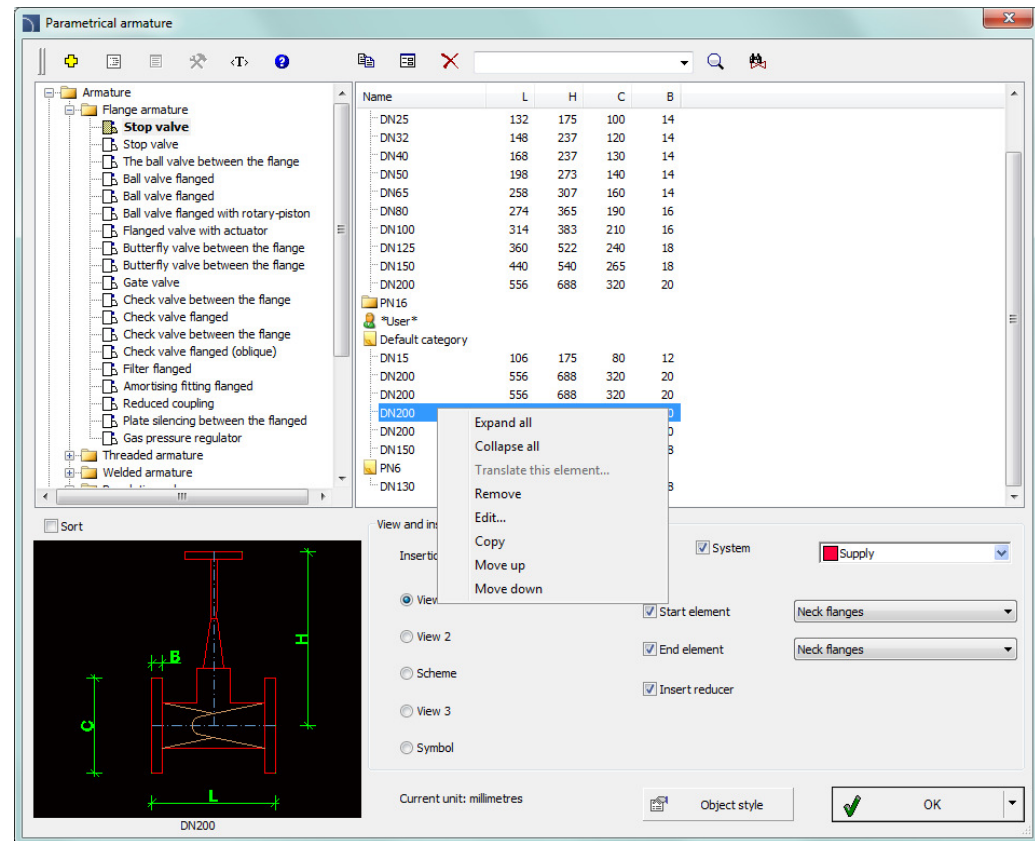




# CADprofi

## ✓ Organizing user databases

In parametrical libraries user has got the possibility to expand the database with their own product types. Parameters of these products can be freely edited, and currently also organized (it is possible to specify their order appearance in the library).



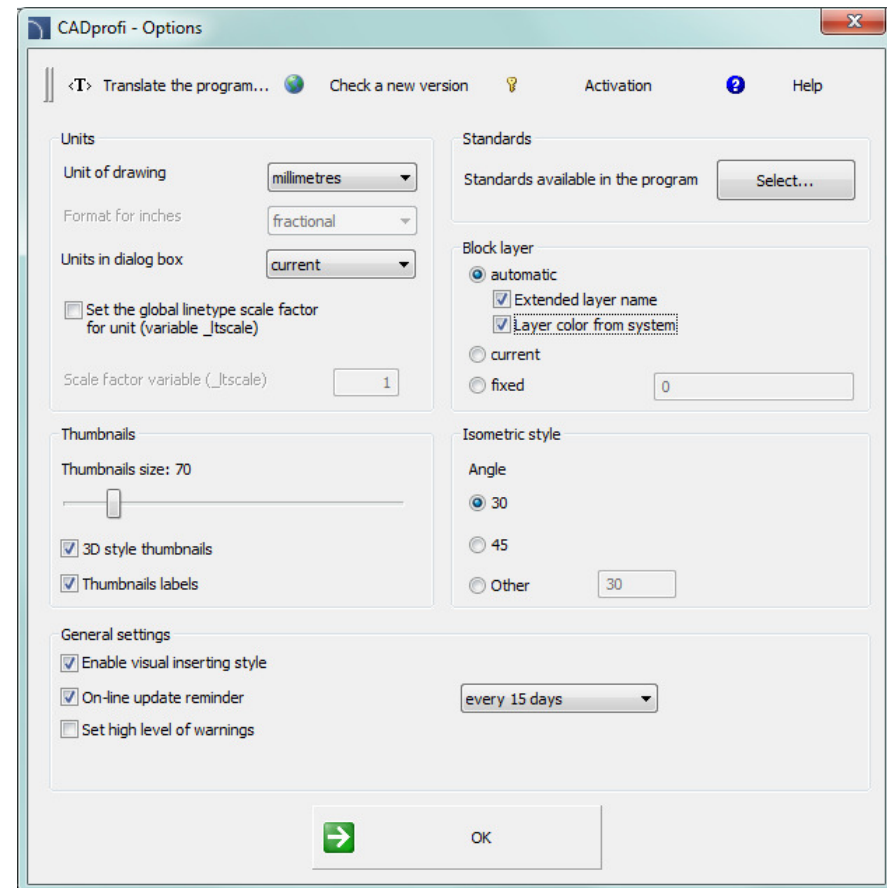




# CADprofi

## ✓ New layer option - layer colour depends on the selected system

In the program it is possible to use the automated layers management. Extended layer structure allows user to place objects from different systems on different layers. Currently it is possible to match the objects colour to the system colour.

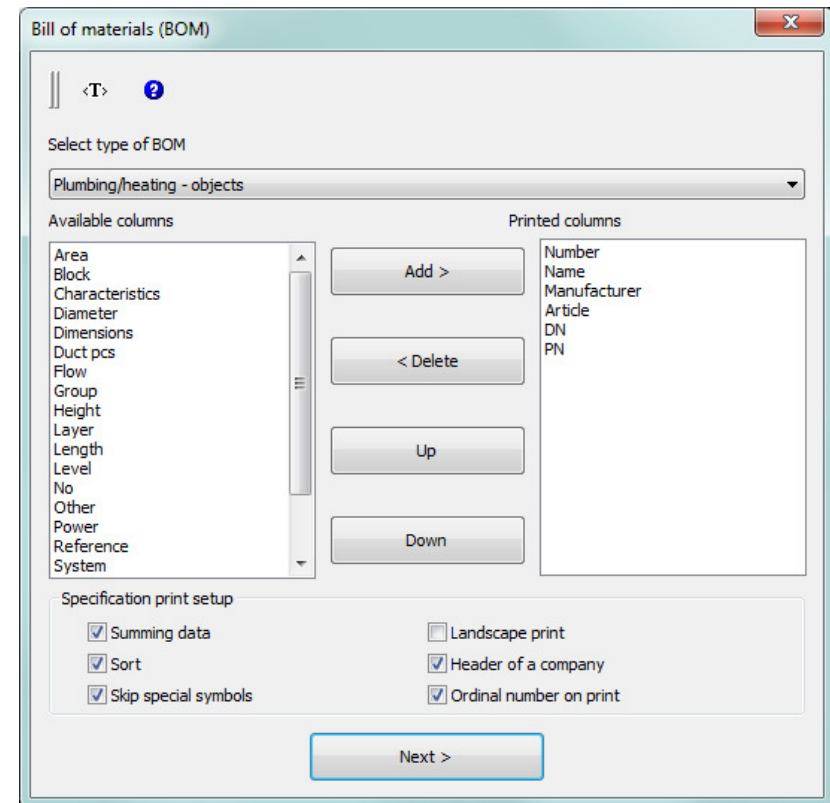


## ✓ Changes in the creation of bill of materials

Currently columns that are used to print can be organized by the "drag and drop" method and they can be deleted with the Delete key.

New types of specifications have been added to the *Bill of materials* command thanks to which user can quickly add them to the drawing.

--		Neck flanges	2pcs.		
--		Neck flanges	2pcs.		
--		Neck flanges	2pcs.		
--		Neck flanges	2pcs.		
S-4		Butterfly valve between the flange	1pcs.		
S-3		Gate valve	1pcs.		
S-2		Filter flanged	1pcs.		
S-1		Stop valve	1pcs.		
No	Mark	Name	Sume	Weight	Note

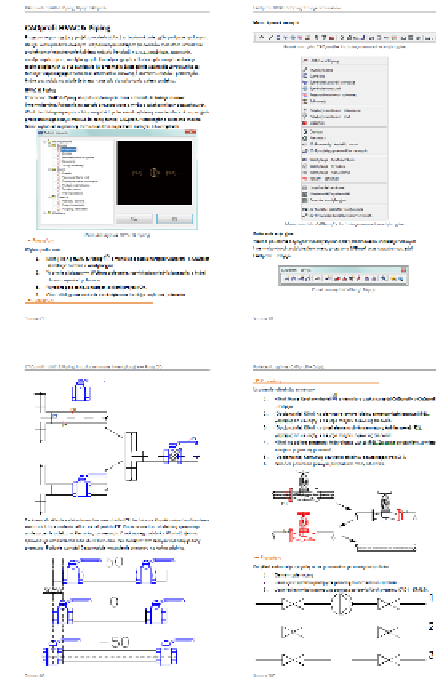
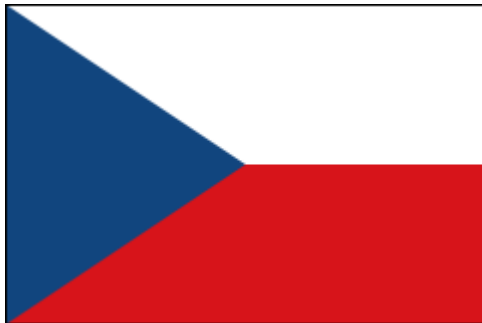




# CADprofi

## ✓ User manual is available in Czech language

Full documentation in the Czech language, including the manual in the pdf format and program help system has been prepared for the new program version. Additionally online help is also available at [www.cadprofi.com](http://www.cadprofi.com).





# CADprofi

## ✓ Adjustment to many base CAD programs

CADprofi 10.13 has been adjusted to work with latest CAD programs, including: AutoCAD 2015 and progeCAD 2014.

CADprofi 10 currently works with many base CAD programs including: AutoCAD (since the 2000 version), BricsCAD, GstarCAD, IntelliCAD, progeCAD, ZWCAD, ARES Commander Edition and others.

The logo for AutoCAD, featuring the word 'AutoCAD' in a bold, red, sans-serif font with a registered trademark symbol.

The logo for ZWCAD, featuring the word 'ZWCAD' in a blue, sans-serif font with a green and blue stylized arrow pointing to the right.

The logo for GstarCAD, featuring the word 'GstarCAD' in a blue and yellow, sans-serif font, with the tagline 'An Alternative CAD System' in a smaller blue font below it.

The logo for BRICSCAD, featuring a stylized blue 'B' shape above the word 'BRICSCAD' in a bold, black, sans-serif font.

The logo for progeSOFT, featuring a blue globe with a yellow and blue stylized 'P' shape above the word 'progeSOFT' in a blue, sans-serif font.

The logo for IntelliCAD, featuring a purple diamond shape with a yellow and blue stylized 'I' shape above the word 'IntelliCAD' in a purple, sans-serif font.



# CADprofi

- ✓ Update of manufacturers' libraries:





**CADprofi**



# **CADprofi 10.01**

Summary of main changes made to the program since the CADprofi 9.01 version.

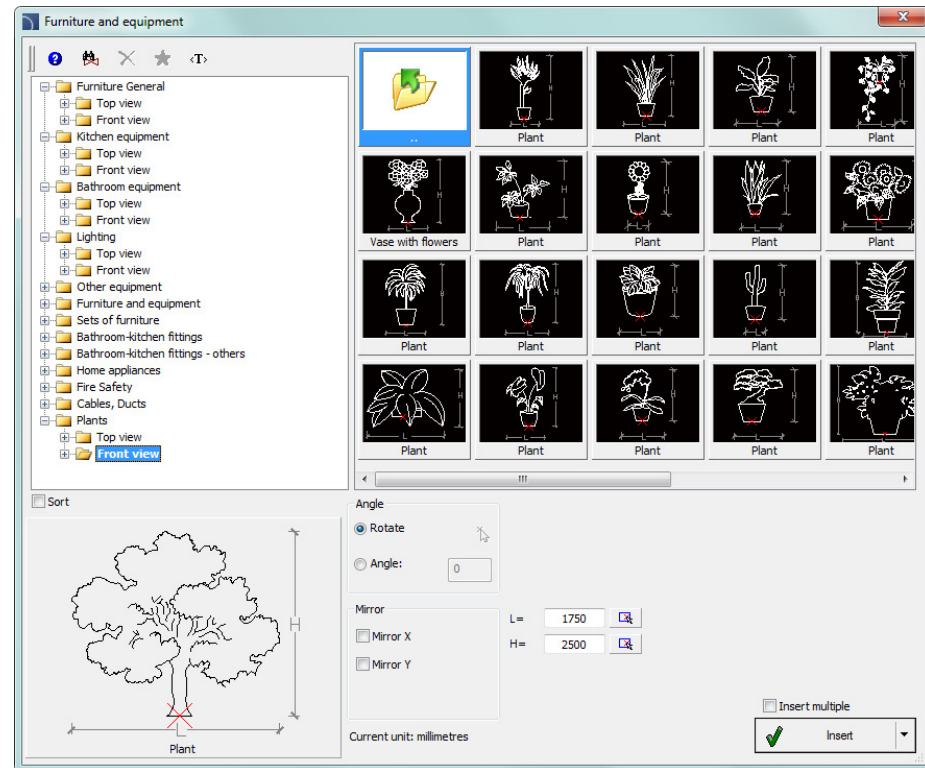
## ✓ CADprofi Architectural – new furniture and equipment categories

Extensions of the furniture and equipment libraries with new categories and elements:

- General furniture (eg, bookcases, cabinets, chests etc.).
- Extended assortment of sanitary equipment (eg basins, urinals, bidets, showers etc).
- Many types of plants (house plants and garden plants).

In many categories front and top views are available.

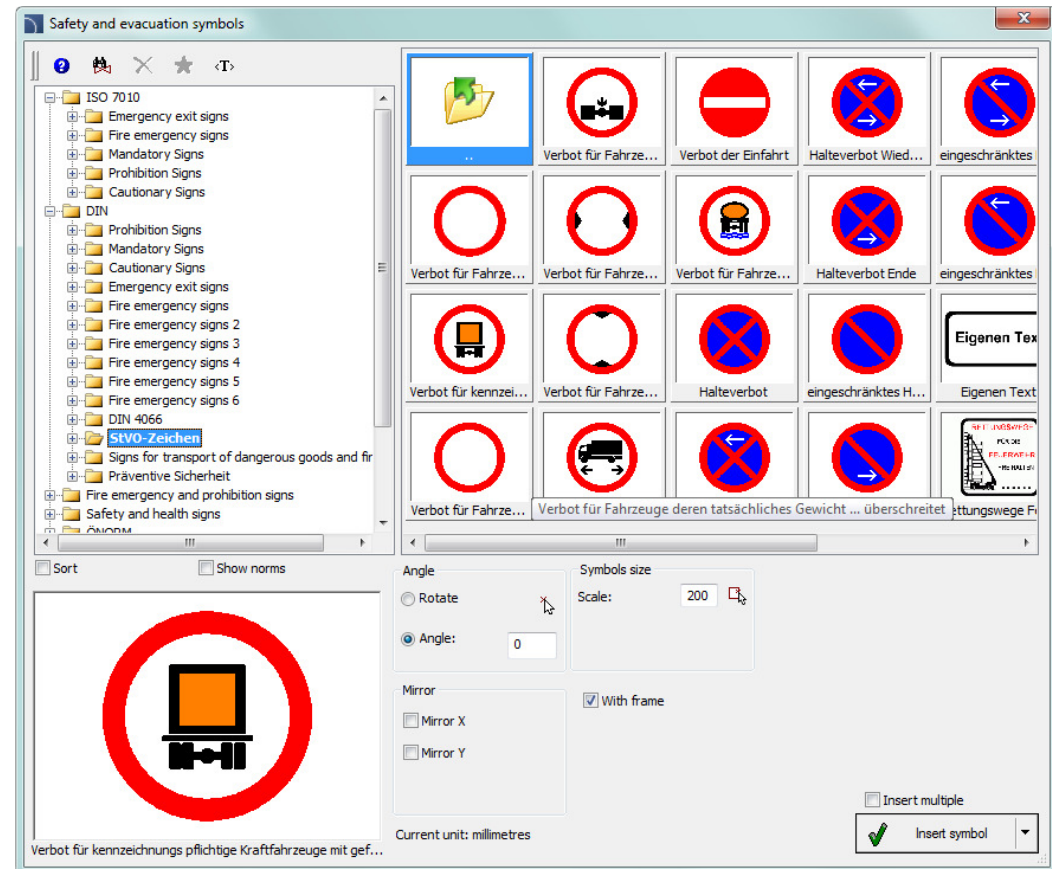
For many objects we have added parameterization, thanks to which user can define the element dimensions on his own.



## ✓ CADprofi Architectural - extension of evacuation, safety and fire safety symbols

Extension of the evacuation, safety and fire protection symbols according to:

- DIN 14034 standard,
- symbols according to: DIN 4844 and DIN 4066 standards,
- ISO 6790 standard regarding the fire safety,
- new safety, warning, evacuation, safety, prohibition and other symbols according to EN ISO 7010,
- additional signs according to DIN standard.

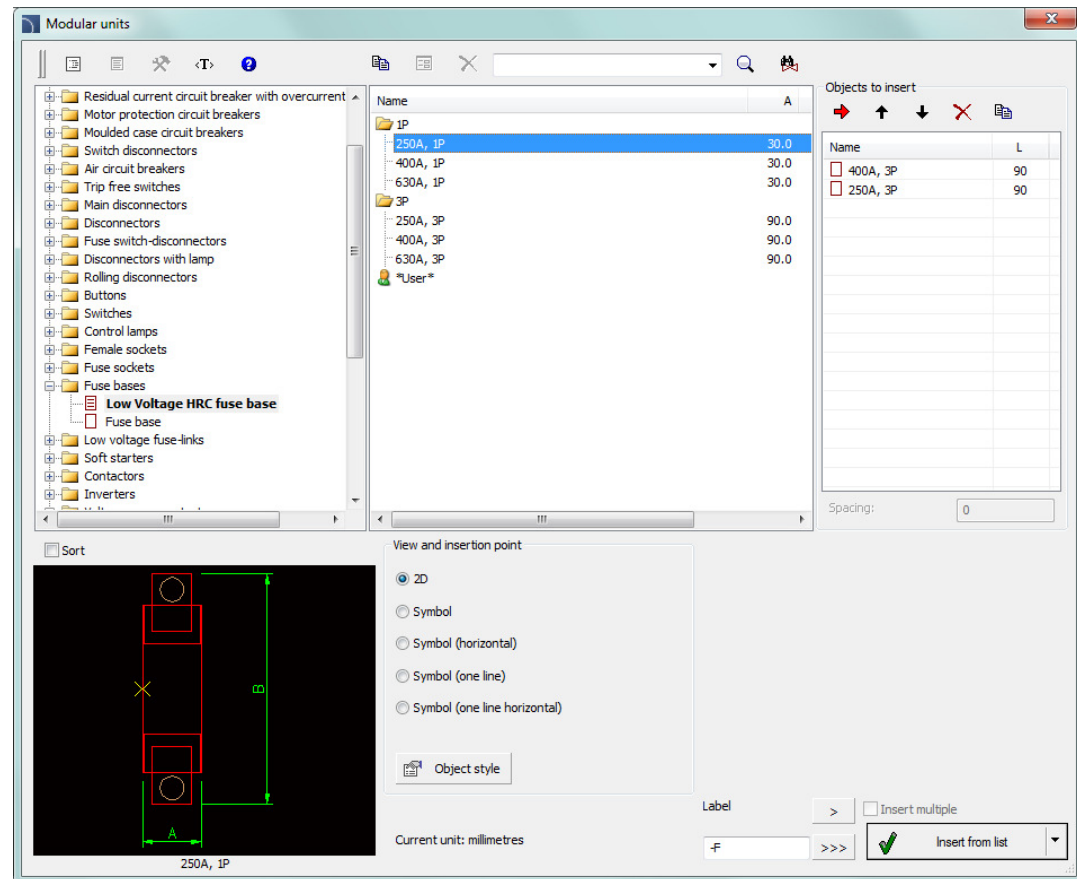




## ✓ CADprofi Electrical – extended library of modular apparatus

Extension of the modular apparatus library:

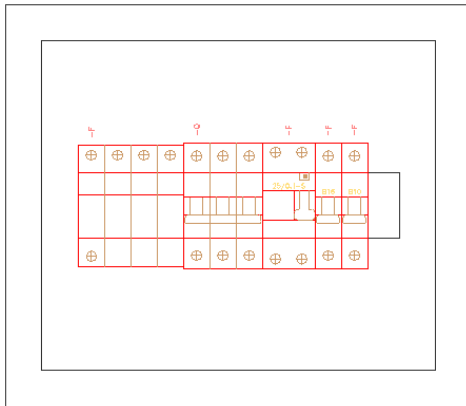
- air circuit breakers,
- trip free switches,
- inverters,
- low Voltage HRC fuse base,
- fuse base,
- digital time switches for distribution board,
- control lamp 3 phase,
- fuse switch-disconnectors,
- female sockets,
- fuse sockets,
- low-voltage fuse links,
- soft starters,
- current transformers,
- phase control relays,
- current relays,
- staircase timers,
- light dependent relays,
- automatic phase switches,
- thermostats,
- dimmers.



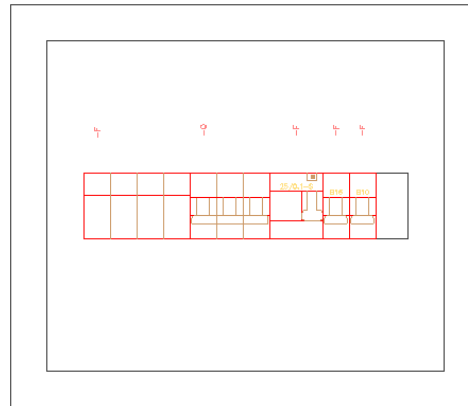
## ✓ CADprofi Electrical – new modular apparatus layer

Apparatus possess a new layer, which allows user to manage the visibility of apparatus clamps that are located in the switchboard.

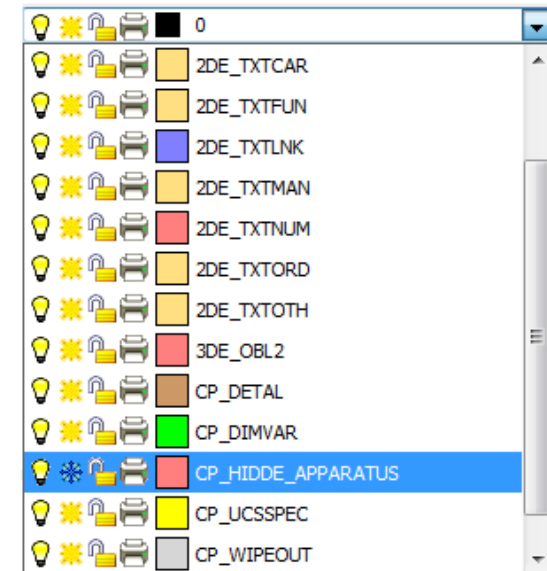
In order to hide clamps, user has to freeze the appropriate layer.



*view with clamps*



*view without clamps*



## ✓ CADprofi Electrical - multivariant symbols for changeover switches



The *Symbols - IEC, NFPA* command contains new multivariant symbols for changeover switches (both vertical and horizontal).

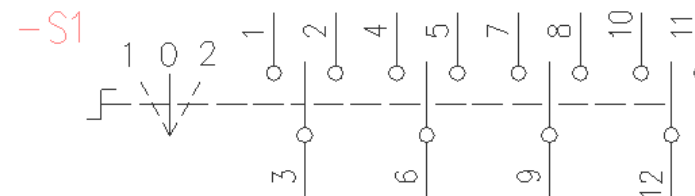
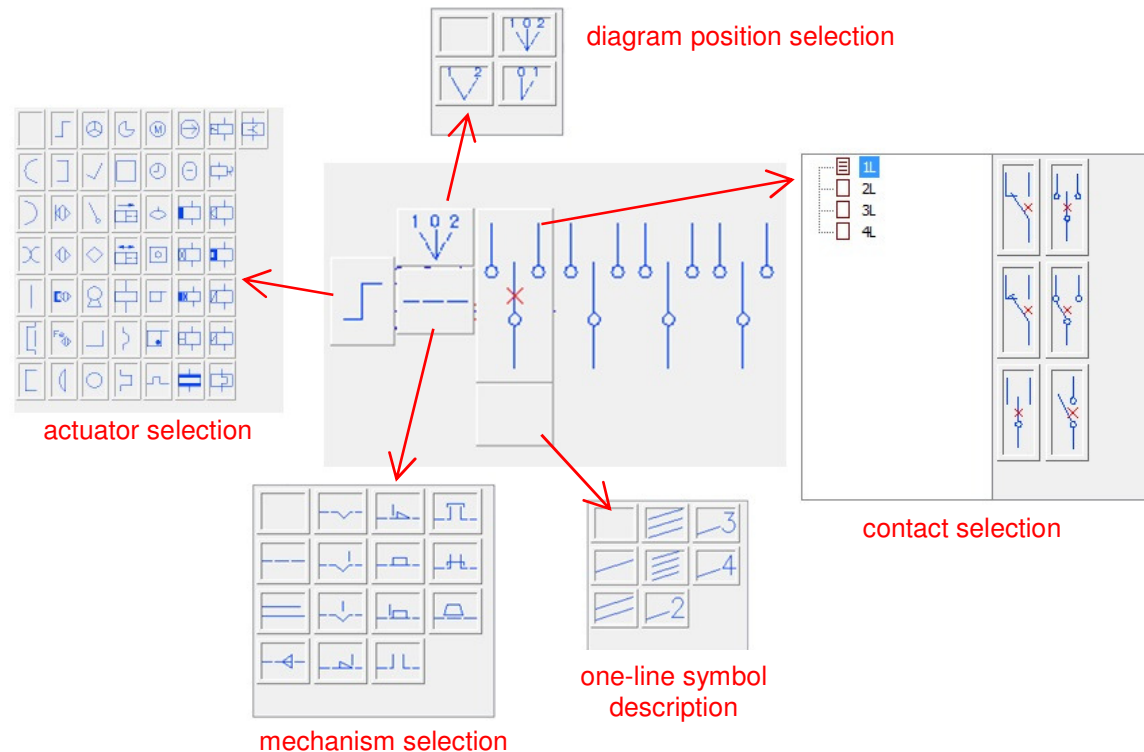
Thanks to them user can insert into the project apparatus that contains any configuration of contacts and other items.

One multi-variant symbol can replace many „traditional” ones. Until now, when user needed to insert some unusual symbols he had to define a new symbol on his own. Currently this task has been made a lot easier because user can choose the right apparatus elements.

Multi-variant symbols can be freely modified with the use of „Edit symbols” command.

Apart from multivariant symbols we have also added many one-line and multi-line symbols.

The allocation of attributes was also unified.



*An example of a multivariant symbol*

## ✓ CADprofi Electrical – installation boxes schemes

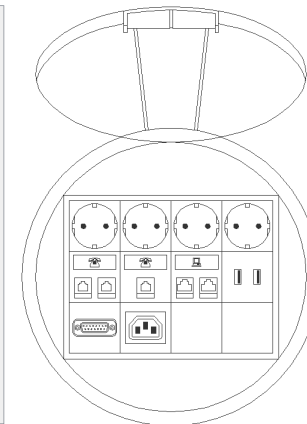
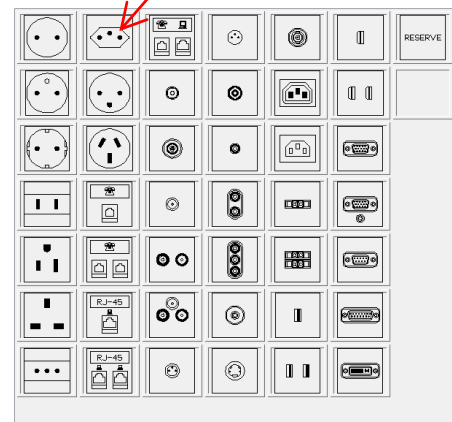
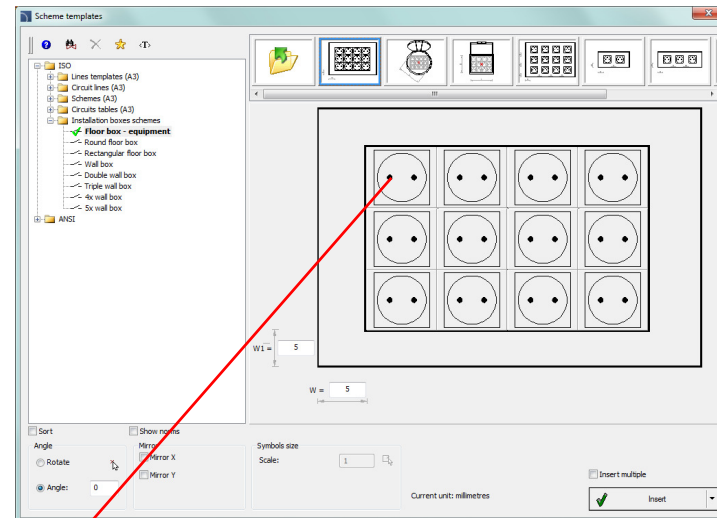
The *Scheme templates* contains installation boxes schemes.

Installation boxes scheme is being used in office buildings, as well as in other places, where there is a need for access to different media in a one single point. Thanks to the modular design it is easy to configure and it can be customized to suit the user needs.

Program contains the database with the most commonly used types of boxes:

- floor rectangular and circular boxes,
- wall boxes, two-, three-, four- and five-fold,
- accessories: electrical sockets, computer network elements, audio-video, connectors, buttons in multivariant system and others.

New symbols and circuit templates were also added to the program.



## ✓ CADprofi Electrical – linear lighting

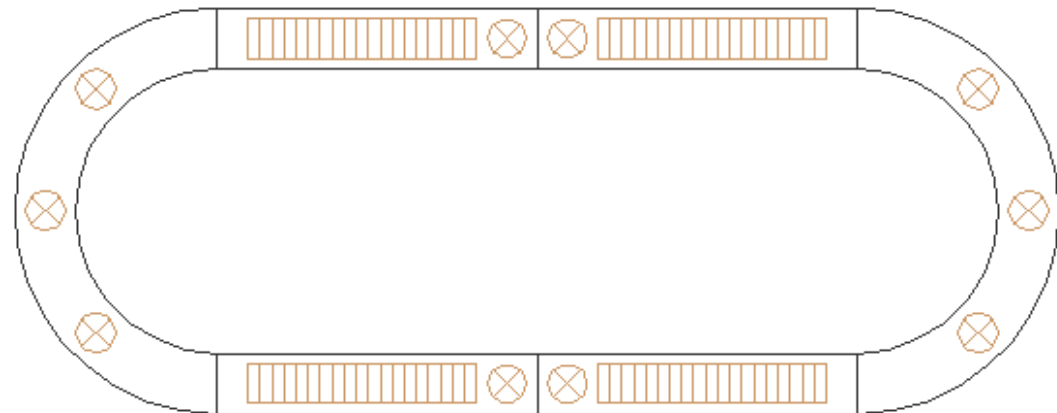


The *Objects and lighting* command contains linear lighting design systems.

They are used in offices, conference rooms, shops, galleries etc.

The system contains many types of lighting (fluorescent and decorative) and many types of fasteners.

The designing takes place in the "one-click" technology that allows to automatically join components to each other, which greatly facilitate and speeds up the work.

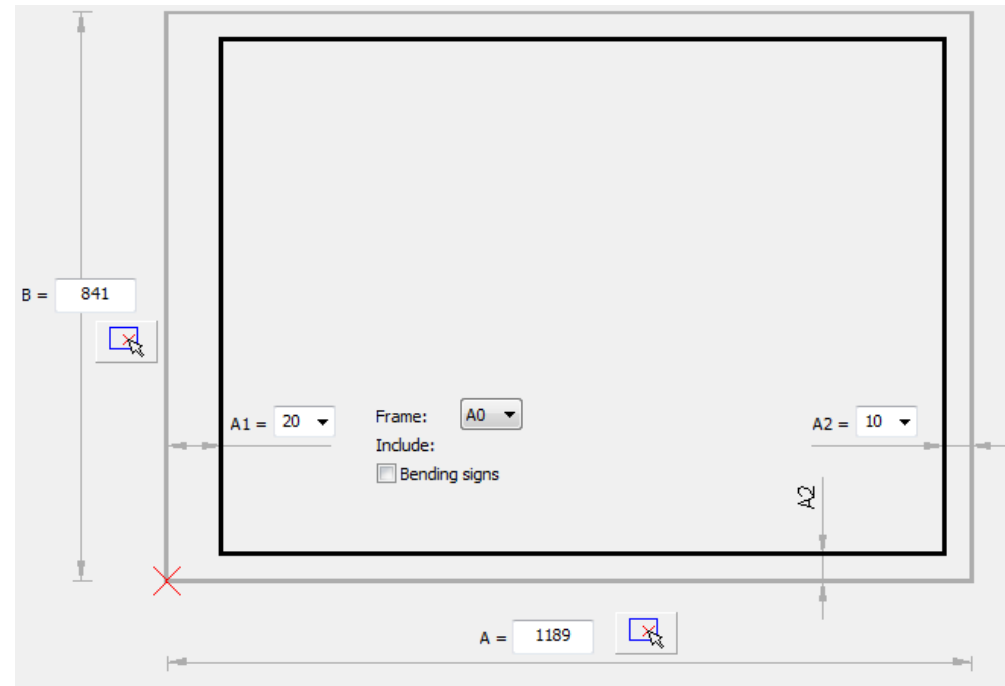


*An example of a decorative lighting system*

## ✓ CADprofi Electrical – changes in frames and tables

### Frames and tables:

- Frames creator, thanks to which user can add to the project frames with different dimensions.
- Standard frames and drawing tables according to the ANSI / ASME standards.

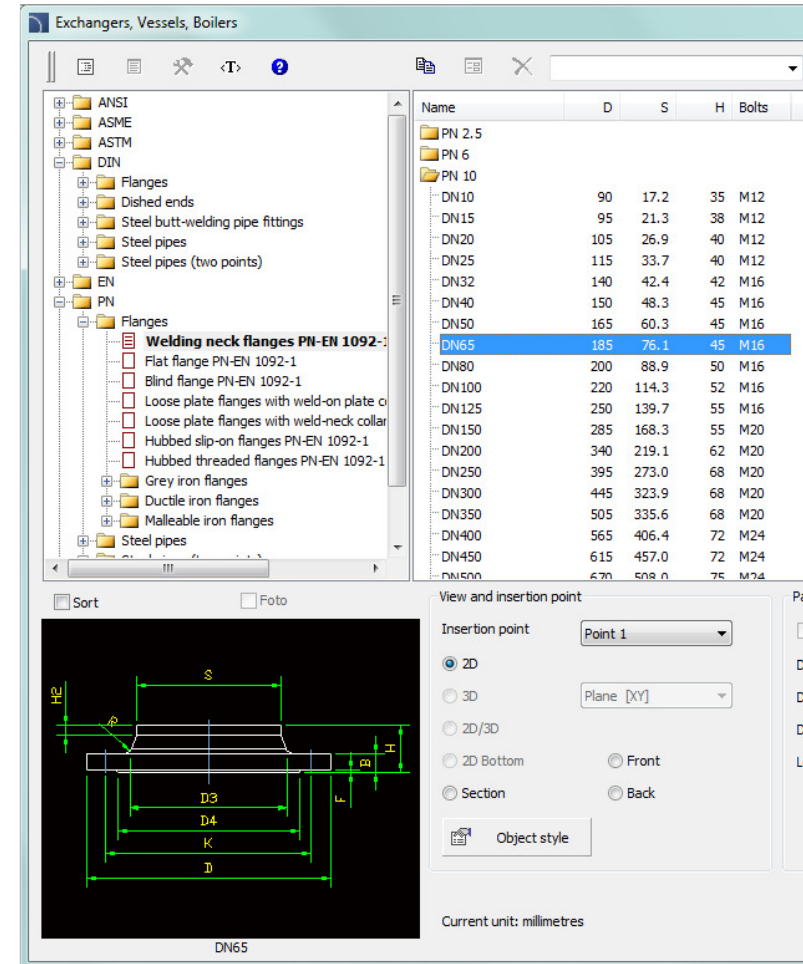
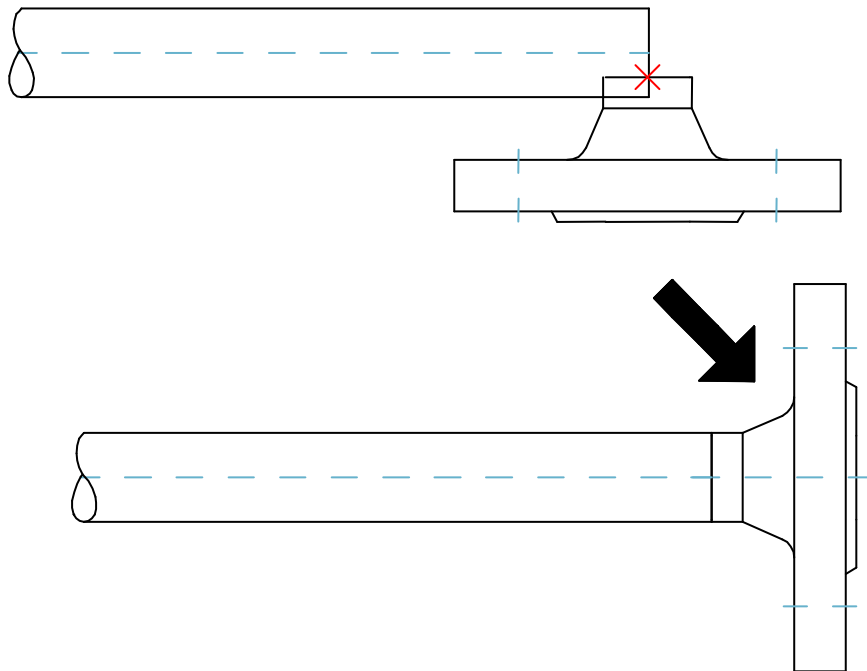


## ✓ CADprofi Mechanical – improved designing of apparatus

Automatic connection of pipes, flanges and fittings with the „One-click” technology.

All the user has to do is to indicate an object in the drawing, and then the program will automatically join the inserted element to the closest matching point.

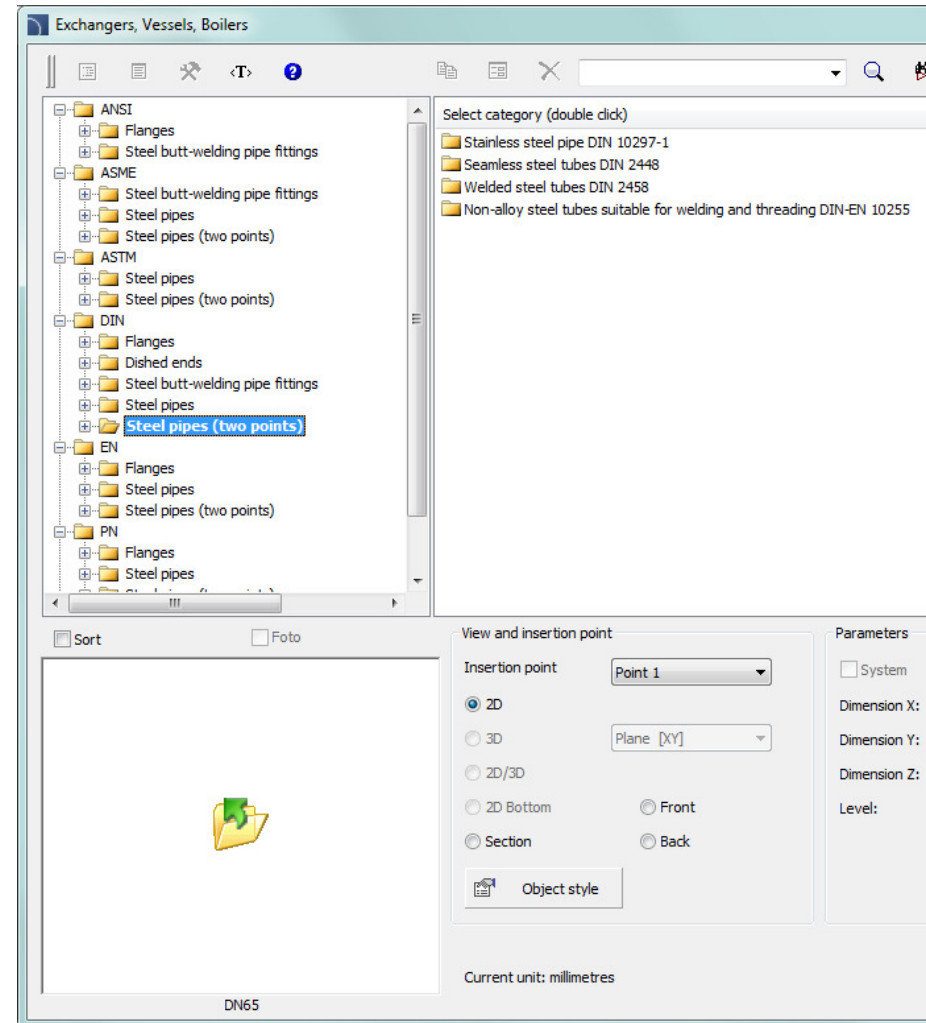
In the following example we have illustrated joining a flange to the pipe.



## ✓ CADprofi Mechanical - new standards in apparatus library

Extension of the apparatus library with new standards:

- DIN 2616 Teil 2 – eccentric reducers,
- DIN 2448 – seamless steel tubes,
- DIN 2458 – welded steel tubes,
- EN 1092-2 – iron flanges,
- EN 10255 – non-alloy steel tubes,
- ASME B36.19M – steel tubes,
- ASME B36.10M – seamless steel tubes, welded,
- ANSI / ASME B 16.9 – fittings (reducers, elbows, tees),
- ASTM A312/A312M-09 – alloy austenitic and ferritic steel tubes,
- ASTM A53/A53M-07 – welded and seamless tubes, galvanized,
- ASTM A524-96 – seamless carbon steel tubes.





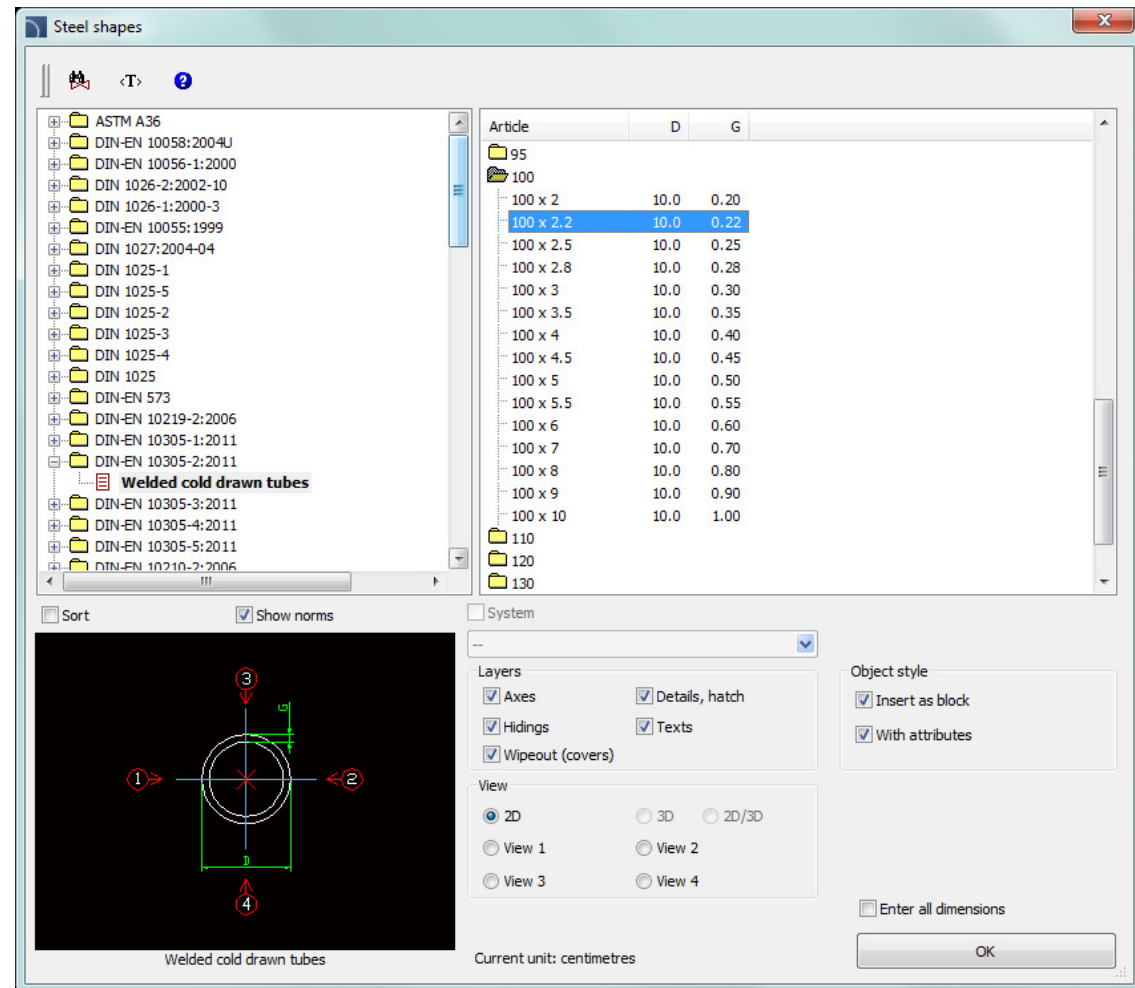
## ✓ CADprofi Mechanical – extended content of the steel profiles library

Steel profile standards have been updated.

Additionally the possibility to insert steel profiles with symmetry axes and holes have been added (these elements can be enabled or disabled during insertion of objects to the drawing).

Additional standards have been also added to the program:

- EN 10305-1:2011 – seamless tubes, cold drawn,
- EN 10305-2:2011 – welded tubes, cold drawn,
- EN 10305-3:2011 – welded tubes, calibrated cold,
- EN 10305-4:2011 – seamless tubes, cold drawn for hydraulic and pneumatic cylinders,
- PN-86/H-93403 – rolled C-profiles.

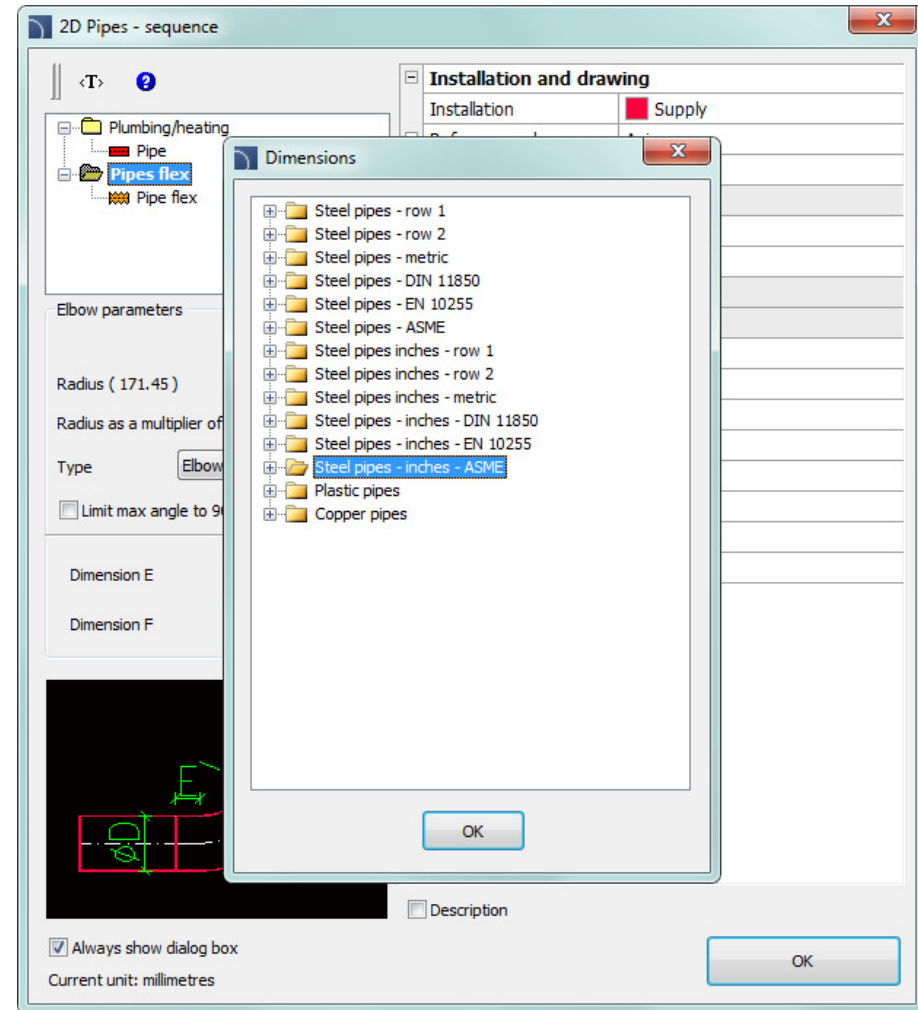




# CADprofi

## ✓ CADprofi HVAC & Piping - extended catalog of pipes

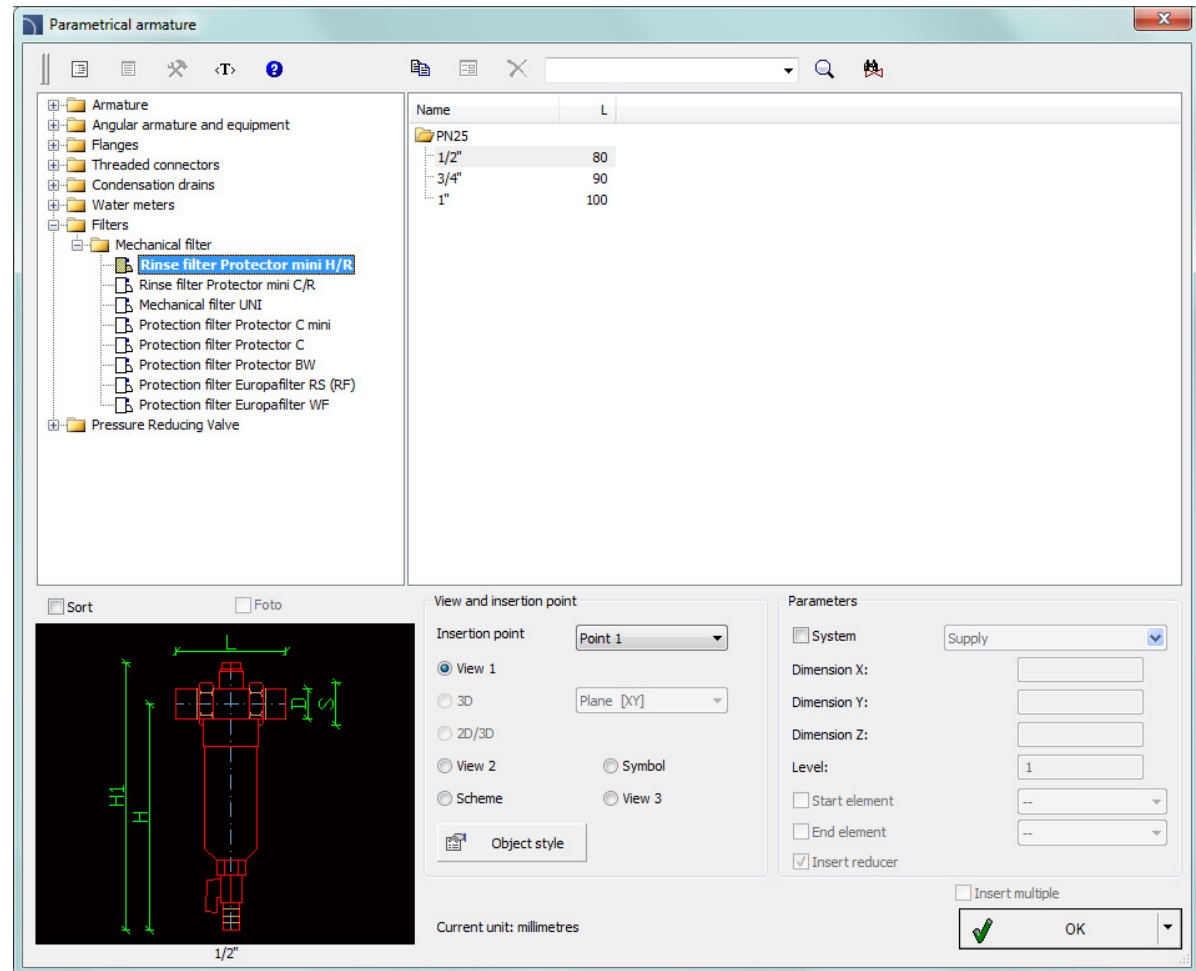
Extended catalog of pipes according to the PN, EN, DIN and ASME standards.



## ✓ CADprofi HVAC & Piping – extended library of armature views

The content have been extended with the following elements:

- water filters,
- water meters,
- pressure regulators.

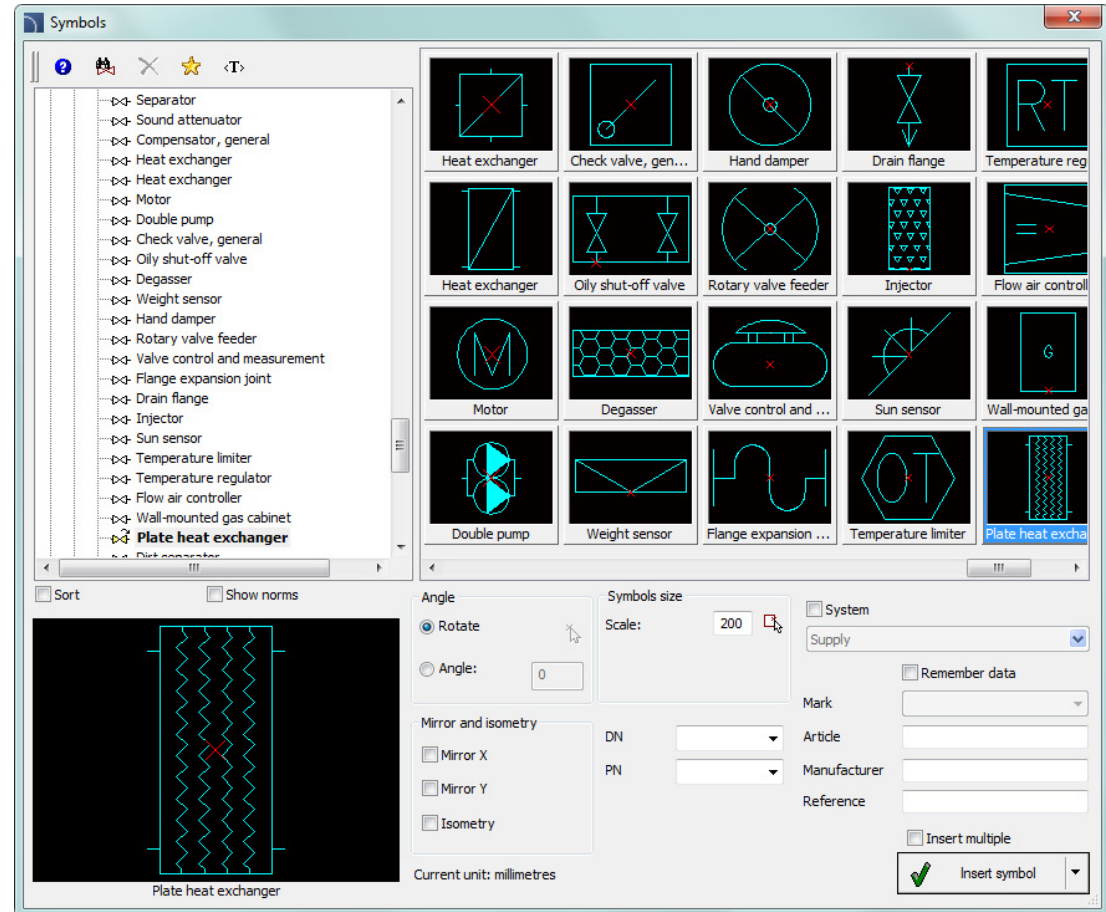


## ✓ CADprofi HVAC & Piping – additional symbols

Additionally, many symbols have been added to several categories, including:

- additional various armature symbols,
- additional sensors,
- and others.

These symbols have been added on the user request.

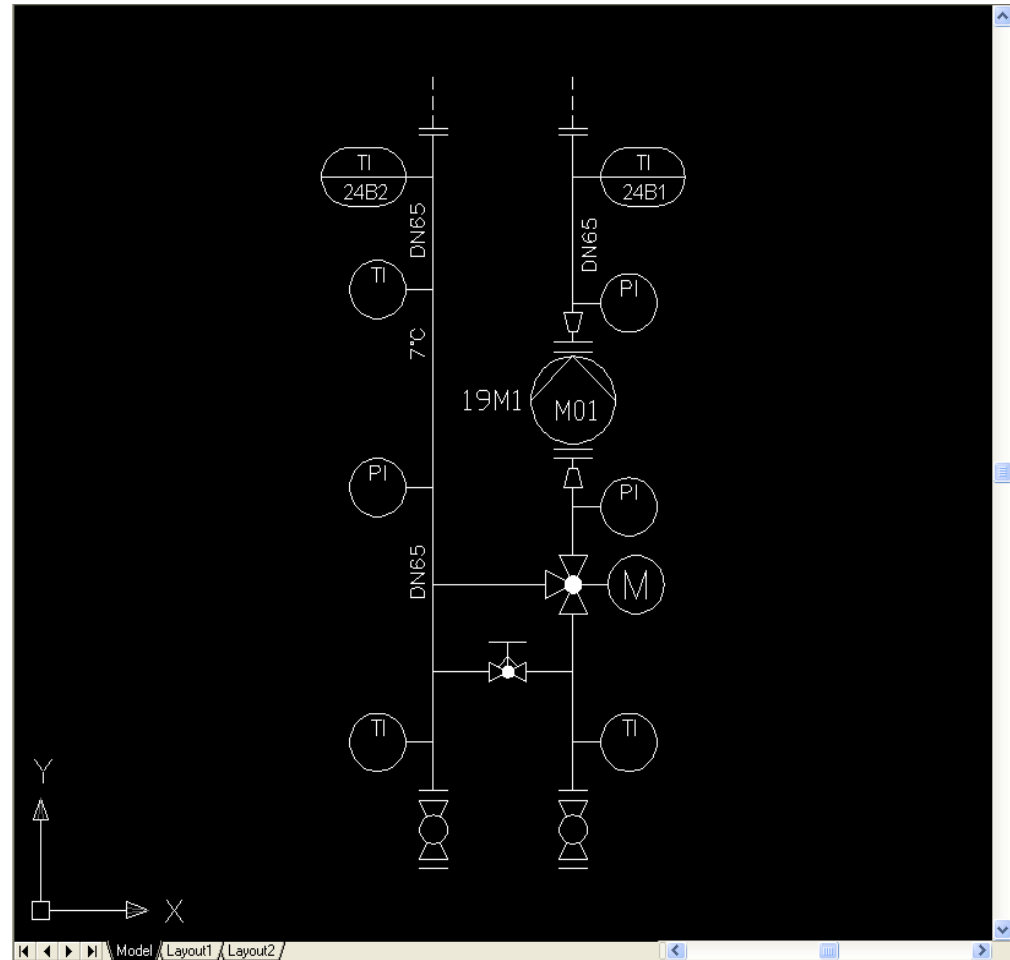




## ✓ CADprofi HVAC & Piping – extended functionality of P&ID symbols

Many P&ID symbols have been modified in the program.

These changes were made in order to increase the project readability.





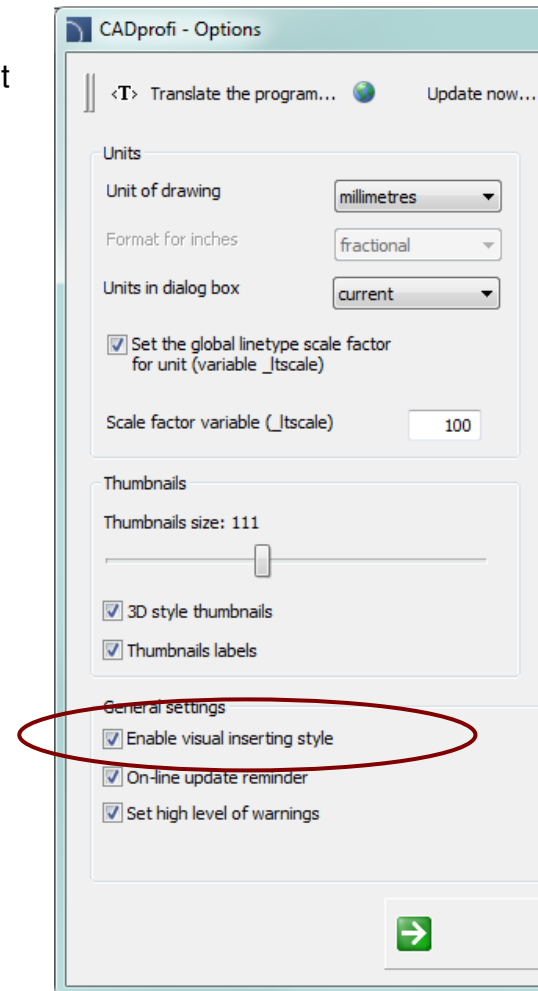
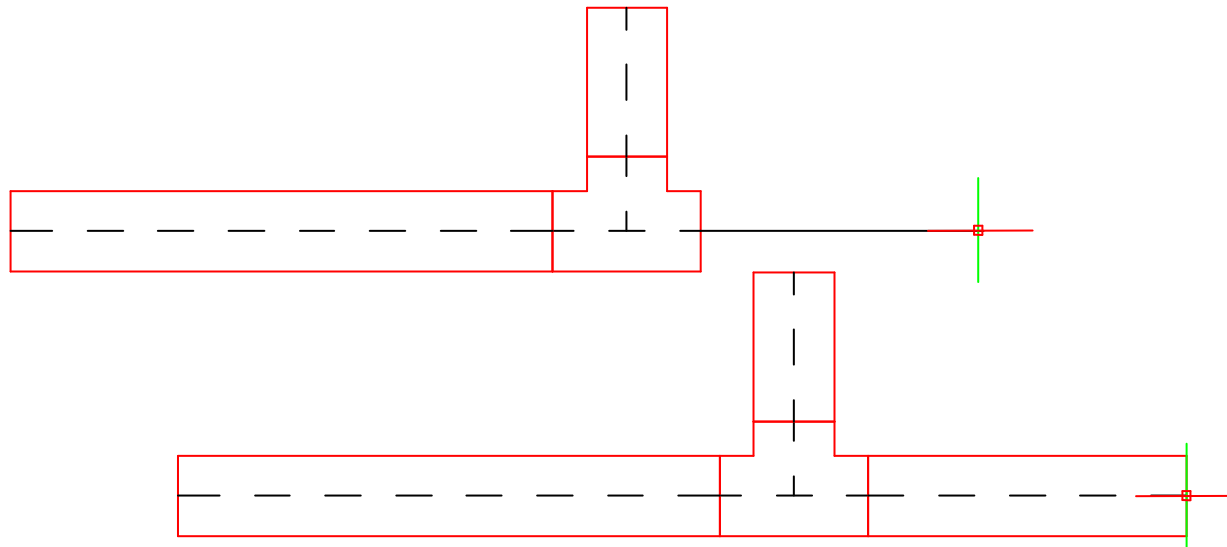
## ✓ "Visualization" of inserted objects, such as pipes, armature, steel profiles

Until now when user drawn or inserted an object to the drawing, the end object appeared on the screen only after the command ended. Currently it is possible to track it at any command stage. This option makes it much easier to determine the final design and location of the object in the drawing.

Visual drawing is available for:

- drawing of pipes, ducts and electrical trays with the point-to-point method,
- insertion of armature or fittings in pipes or ducts,
- simultaneous drawing of two or three schematic lines sections,
- drawing of steel profiles with the point-to-point method.

*This option is available only in certain CAD programs.*



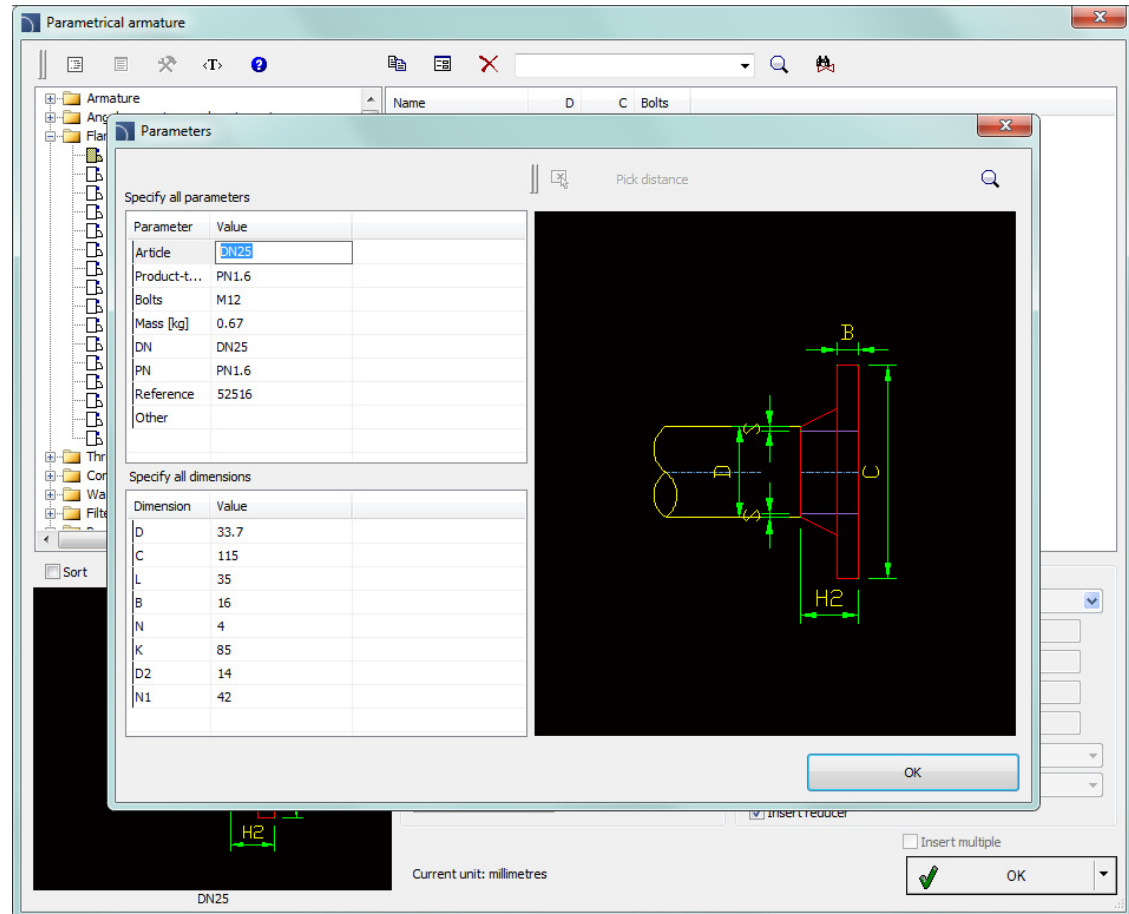


# CADprofi

## ✓ Possibility to expand the object database with user products

Program contains many object databases with specified parameters. Currently user can use standard type of series, as well as expand the database with his own type of series, which can be freely edited and saved in the database.

It is possible to specify any dimensions and technical parameters for all user elements that have been added to the program.

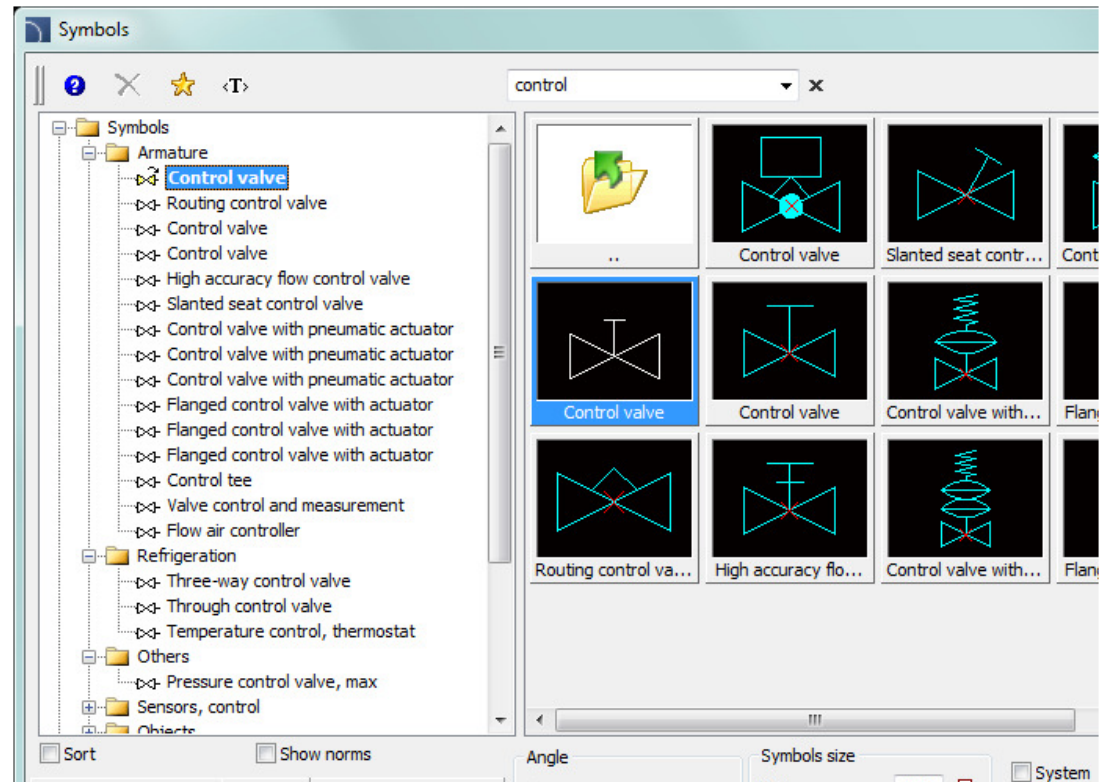


## ✓ Better symbol search

Searching symbols in the program will instantly display the results "on the fly", thanks to which user can see results as he types the phrase.

After filling the search field, application will automatically filter the current library content and display only those categories which contain the objects with names that match the search results.

Search field remembers typed words, which allow user to search them again from the expanded list.





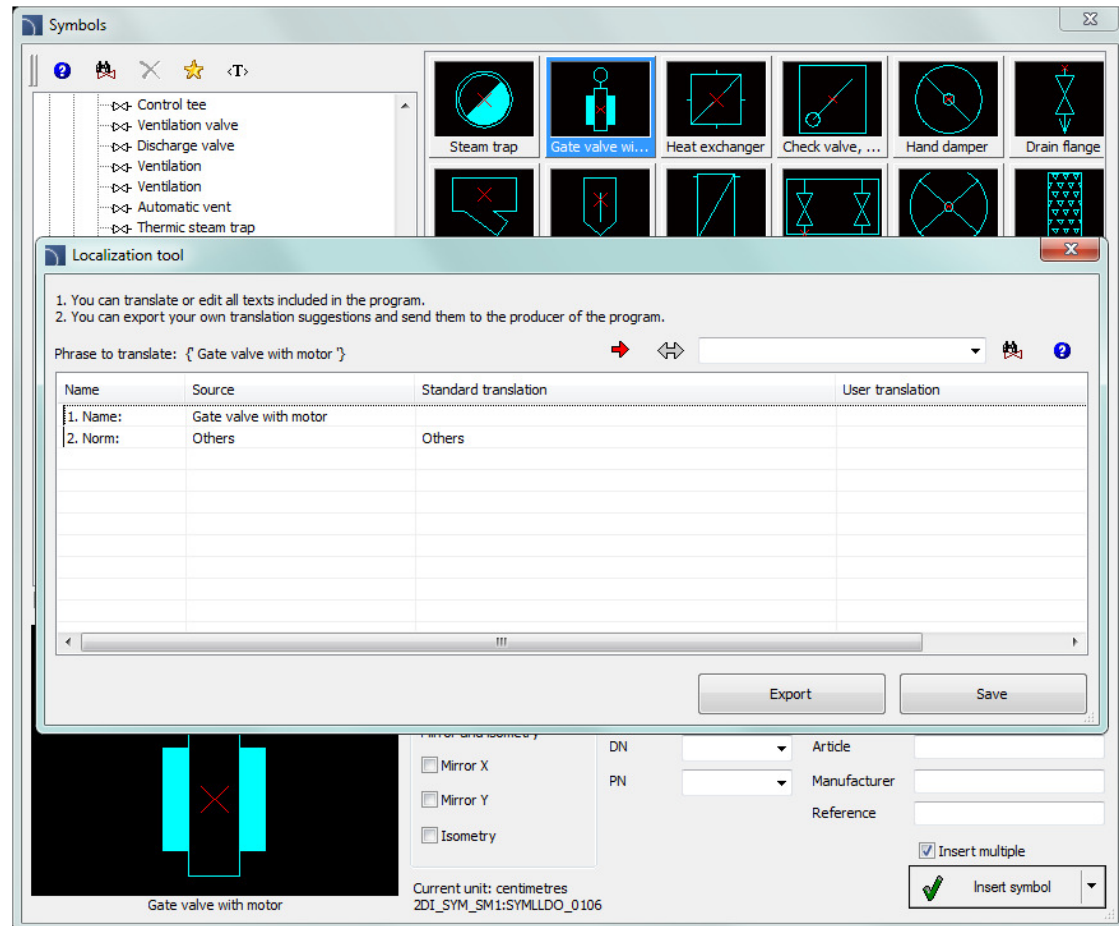
## ✓ Possibility to add your own translations

Due to lack of suitable source materials, some elements (e.g. foreign standards or manufacturers' libraries) that are in the program may not be translated into user native language.

New program version possesses a tool, thanks to which user can easily add his own translations for such elements.

Thanks to that all descriptions and specifications can be prepared in user native language.

Detailed information are available in the CADprofi program on-line help.



## ✓ New system to design lighting protection

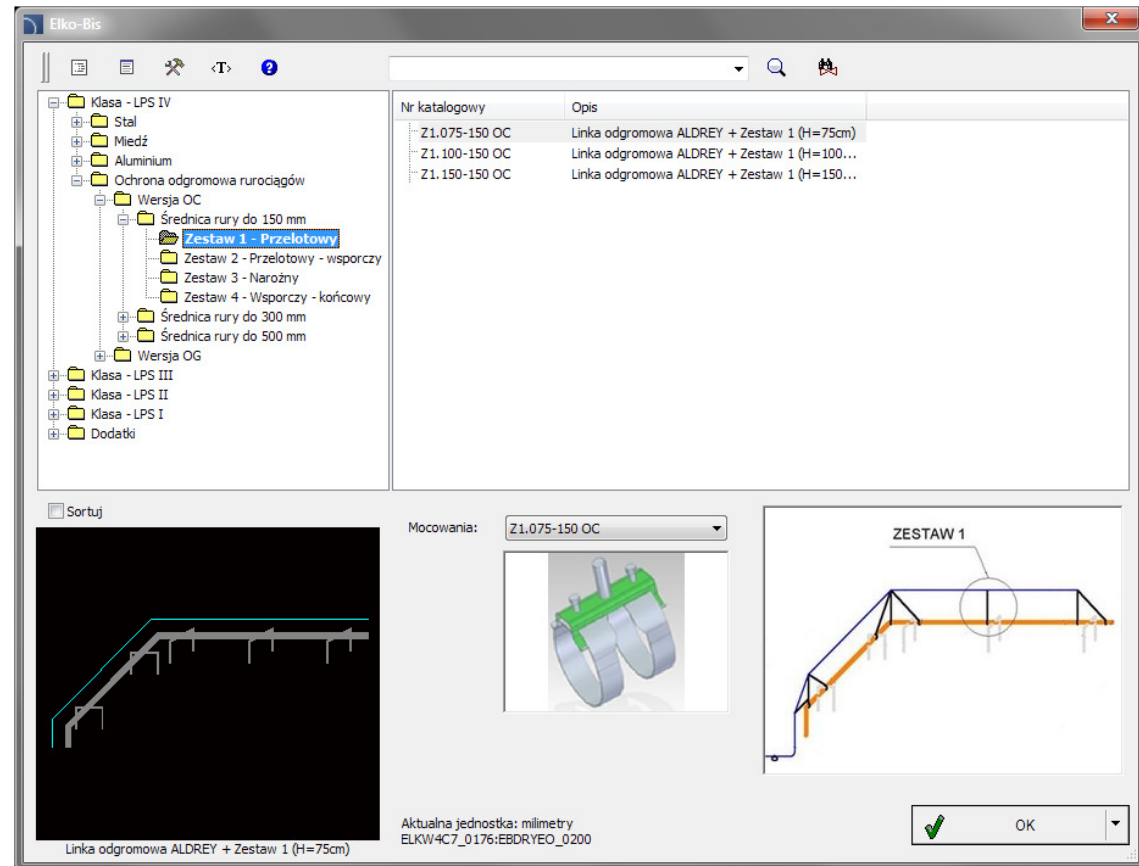
A lighting protection system with usage of ELKO-BIS products have been added to the program.

This system is available in both CADprofi application and ElkoBis-CAD program.

ElkoBis-CAD has received the recommendation of the Polish Committee of Lighting Protection. The program was also recognized at the 26th International ENERGETAB 2013 Fair and received a VOLTA Golden Statue of the Polish Chamber of Electrical Engineering as the best electrotechnical product.

This module includes:

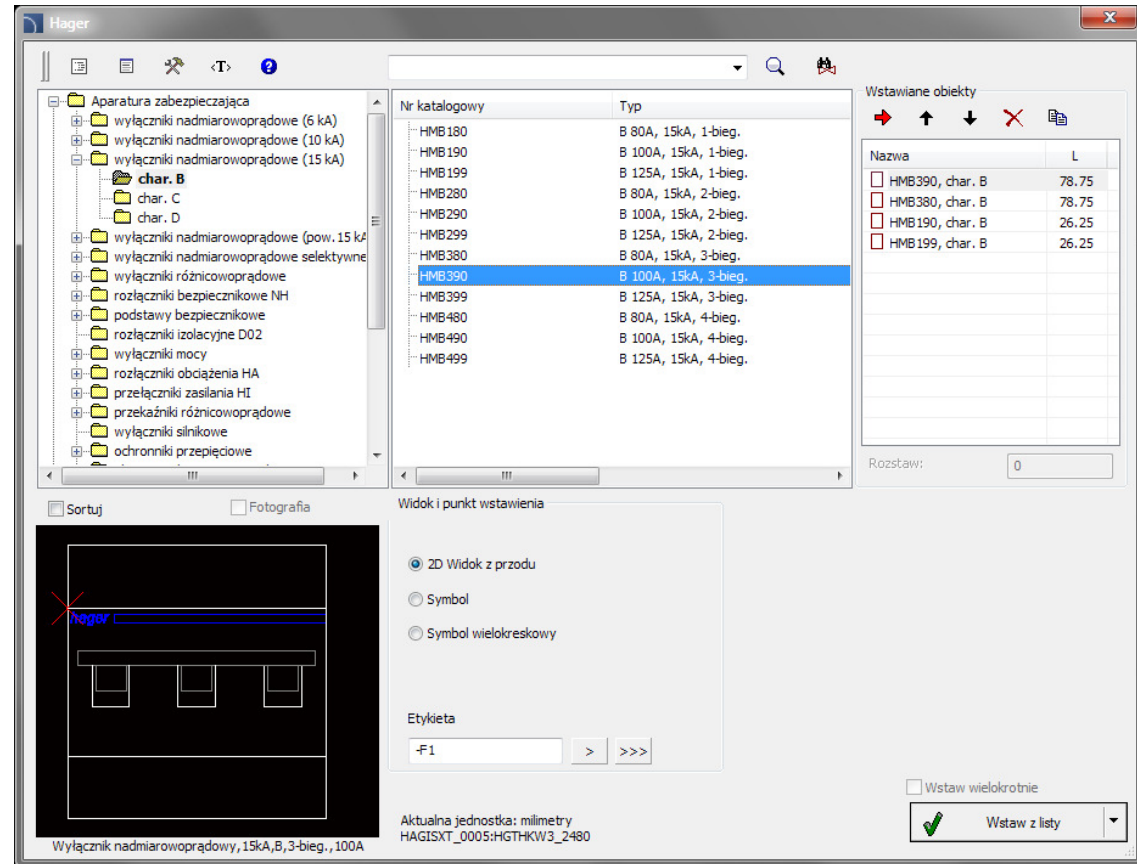
- functions for comfortable designing of feints on protected objects,
- lighting wires,
- masts and spiers,
- linear and earthing pins,
- different types of connections,
- piping protection system.



## ✓ New library of Hager products

Products from the Hager company have been added to the program. This library contains Hager products, including:

- protective equipment,
- control apparatus,
- mounted and satnding Univers switchgear,
- Univers N and Unimes building systems,
- KNX and other system components.





# CADprofi

## ✓ Grundfos MAGNA3 pumps

Grundfos MAGNA3 pumps have been introduced.





# CADprofi

## ✓ Adjustment to many base CAD programs

Fixed reported issues with compatibility of various older CAD versions.

CADprofi 10 has been adjusted to work with latest CAD programs, including: AutoCAD 2014 Sp1, ZWCAD+ 2014, GstarCAD 8, BricsCAD V14, progeCAD 2013 (v. 13.0.18), 4MCAD V14, ArCADia-INTELLICAD (7.2.336 and 7.2.500 beta).

CADprofi 10 currently works with many base CAD programs including AutoCAD (since the 2000 version), AutoCAD LT, BricsCAD, GstarCAD, IntelliCAD, progeCAD, ZWCAD (also with the ZWCAD+2014), ARES Commander Edition and others.





# CADprofi

- ✓ Update of manufacturers' libraries

